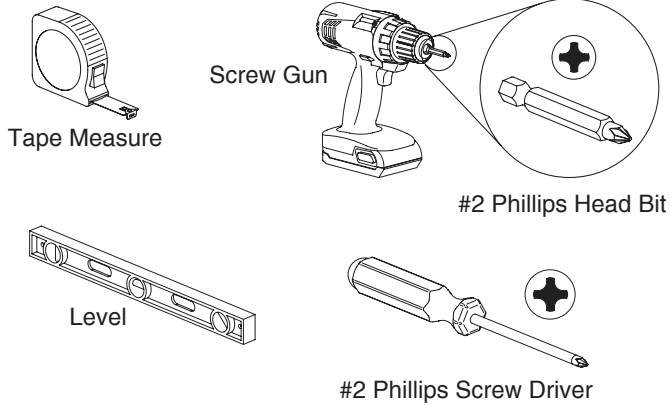
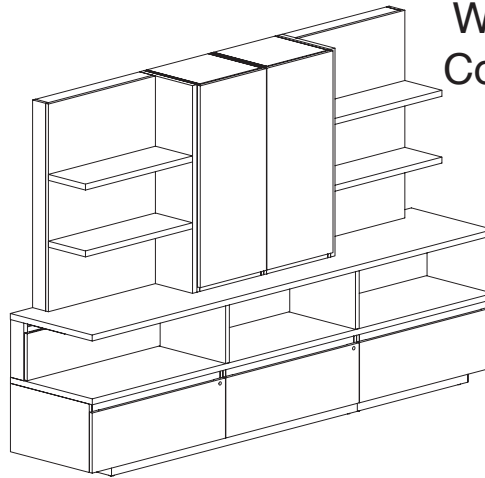


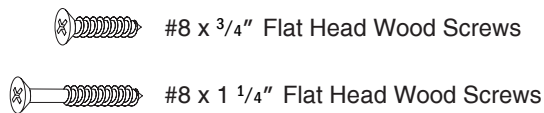
## Recommended Tools



## Wall Storage Configuration

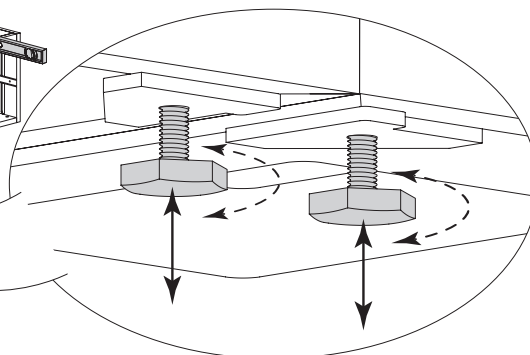
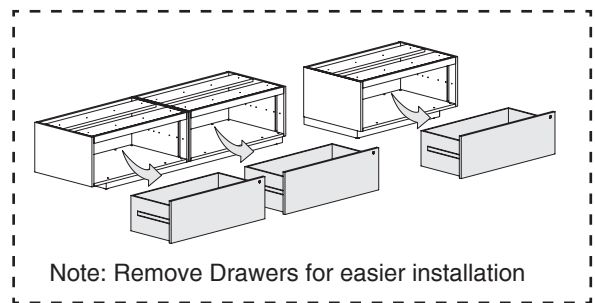
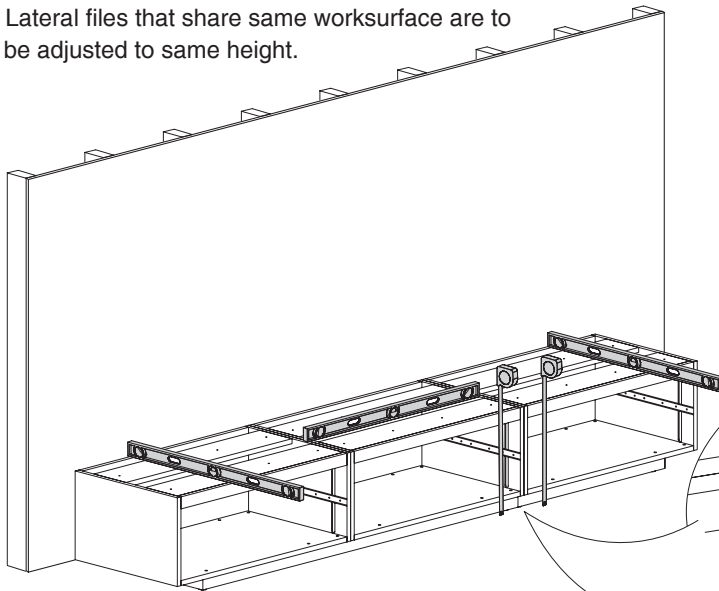


## Hardware Used

Step 1

## Level Lateral Files

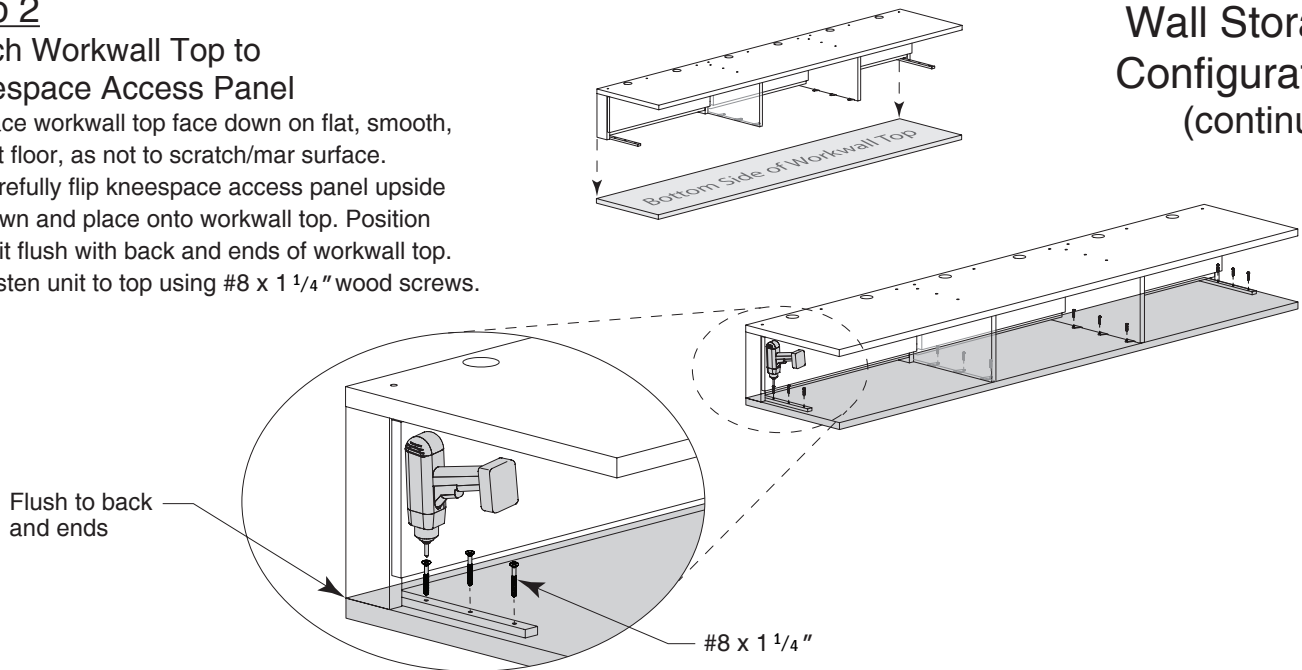
- Position lateral files in desired location against wall.
- Level all lateral files front-to-back and side-to-side by rotating adjustable glides.
- Lateral files that share same worksurface are to be adjusted to same height.



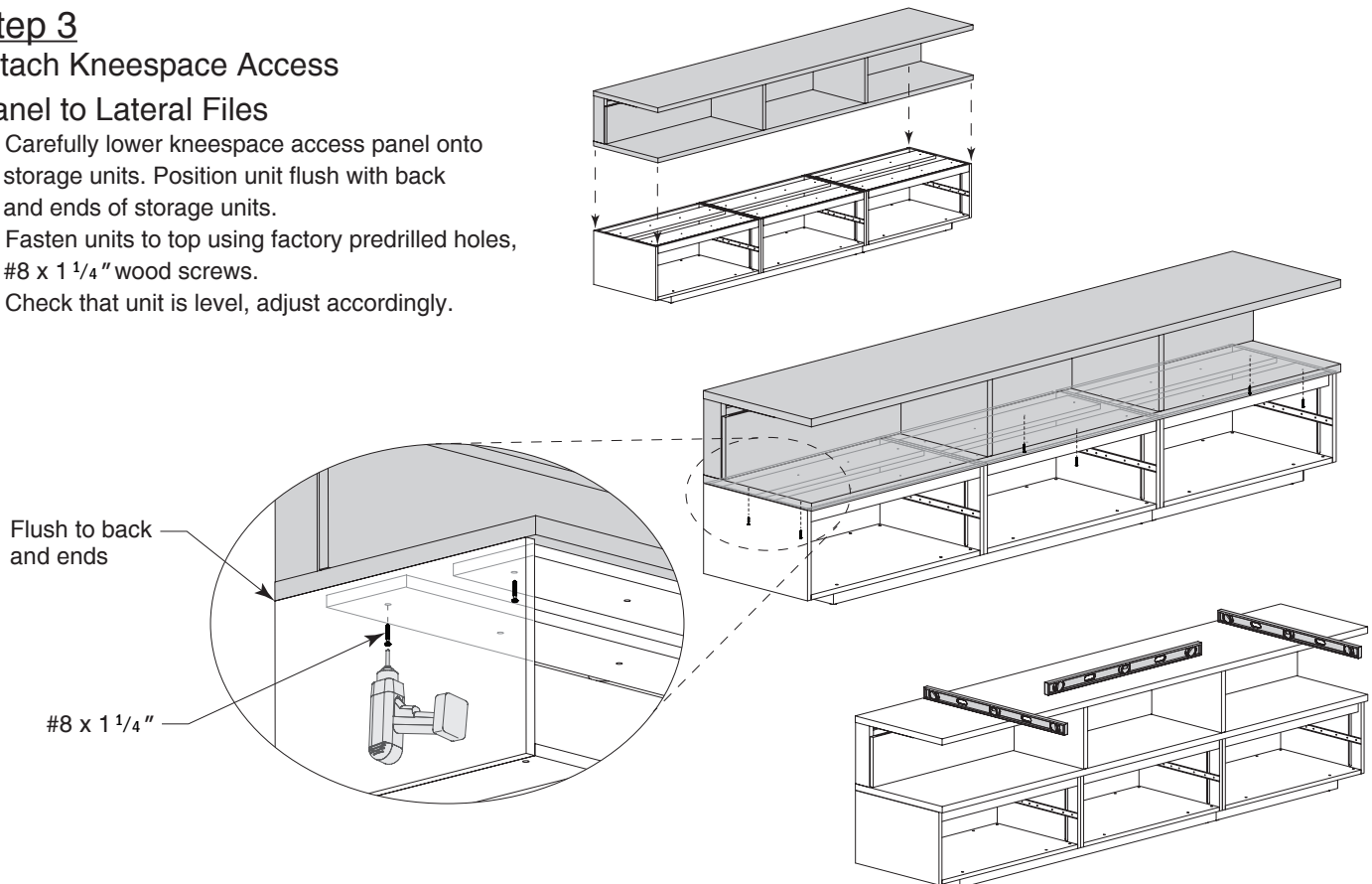
**Notice To Installers:** Failure to comply with installation instructions will compromise the safety, durability and performance of this product, which may risk injury to the user of this product and/or diminish the product life cycle. Jasper Group assumes no liability in these instances.

**Step 2****Attach Workwall Top to Kneespace Access Panel**

- Place workwall top face down on flat, smooth, soft floor, as not to scratch/mar surface.
- Carefully flip kneespace access panel upside down and place onto workwall top. Position unit flush with back and ends of workwall top.
- Fasten unit to top using #8 x 1 1/4" wood screws.

**Wall Storage Configuration (continued)****Step 3****Attach Kneespace Access Panel to Lateral Files**

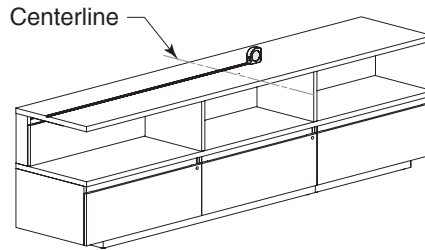
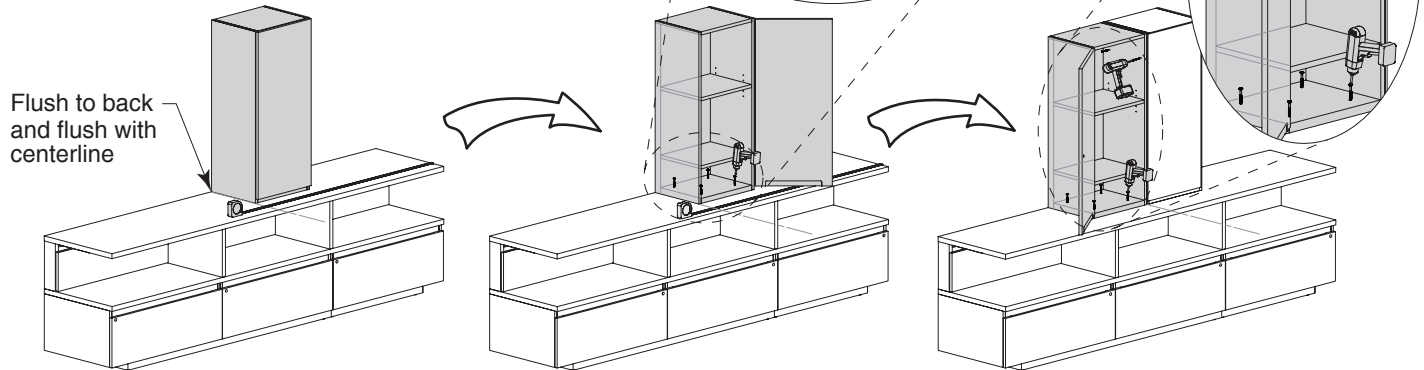
- Carefully lower kneespace access panel onto storage units. Position unit flush with back and ends of storage units.
- Fasten units to top using factory predrilled holes, #8 x 1 1/4" wood screws.
- Check that unit is level, adjust accordingly.



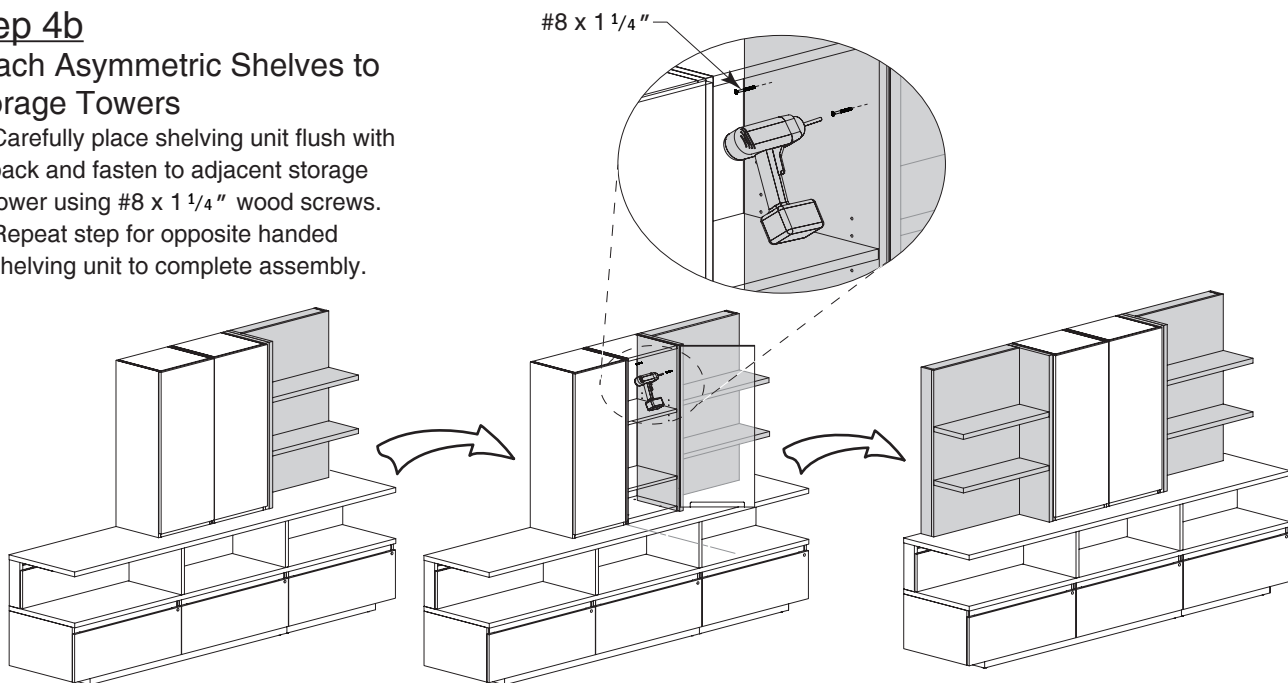
**Notice To Installers:** Failure to comply with installation instructions will compromise the safety, durability and performance of this product, which may risk injury to the user of this product and/or diminish the product life cycle. Jasper Group assumes no liability in these instances.

**Step 4a****Attach Central Storage Towers to Kneespace Access Panel**

- Use tape measure to locate center of workwall top.
- Carefully place storage tower onto worksurface. Position unit flush with back, and edge of unit flush to centerline of workwall top.
- Fasten unit to worksurface using factory pre-drilled holes, #8 x 1 1/4" wood screws.
- Place opposite handed storage tower flush and adjacent to previous unit. Secure to both worksurface to and adjacent unit using #8 x 1 1/4" wood screws.

**Wall Storage Configuration (continued)****Step 4b****Attach Asymmetric Shelves to Storage Towers**

- Carefully place shelving unit flush with back and fasten to adjacent storage tower using #8 x 1 1/4" wood screws.
- Repeat step for opposite handed shelving unit to complete assembly.



**Notice To Installers:** Failure to comply with installation instructions will compromise the safety, durability and performance of this product, which may risk injury to the user of this product and/or diminish the product life cycle. Jasper Group assumes no liability in these instances.