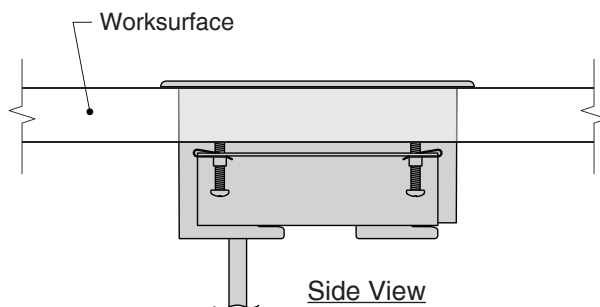
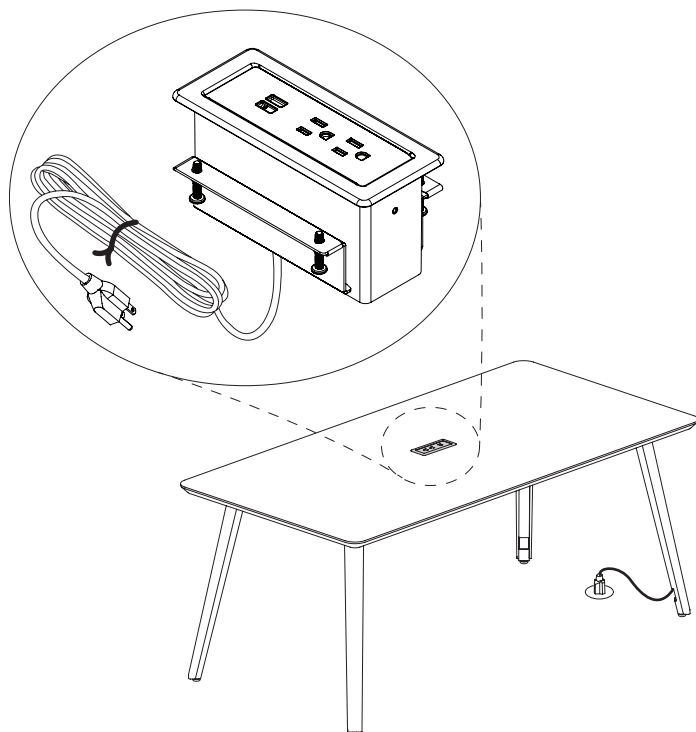


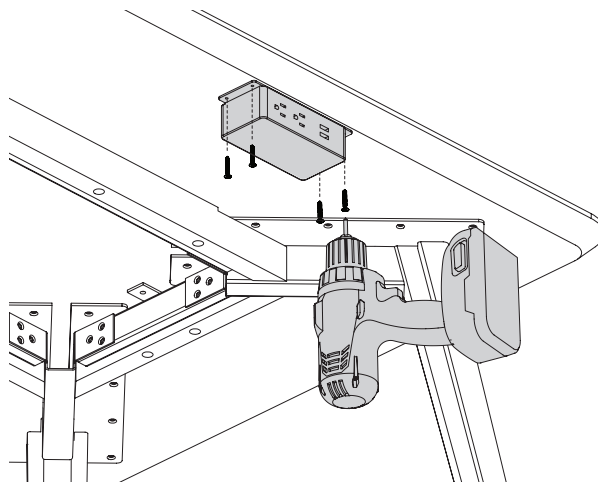
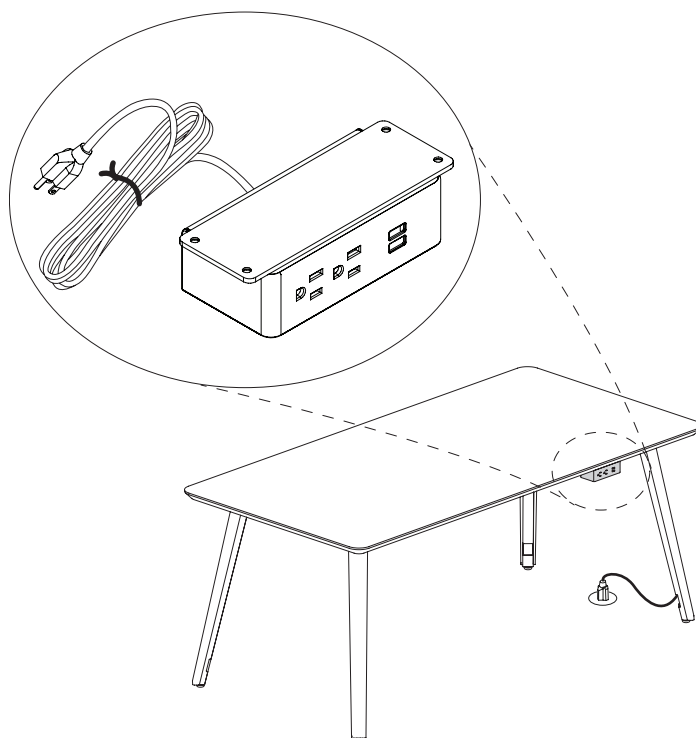
Worksurface Power - EC26

Electrical



- Remove clamping bracket from power unit.
- From top side of table, feed power cord through cutout in worksurface and lower unit onto surface.
- Reattach clamping bracket from underside of table, tighten four screws firmly.

Under Surface Power - EC27

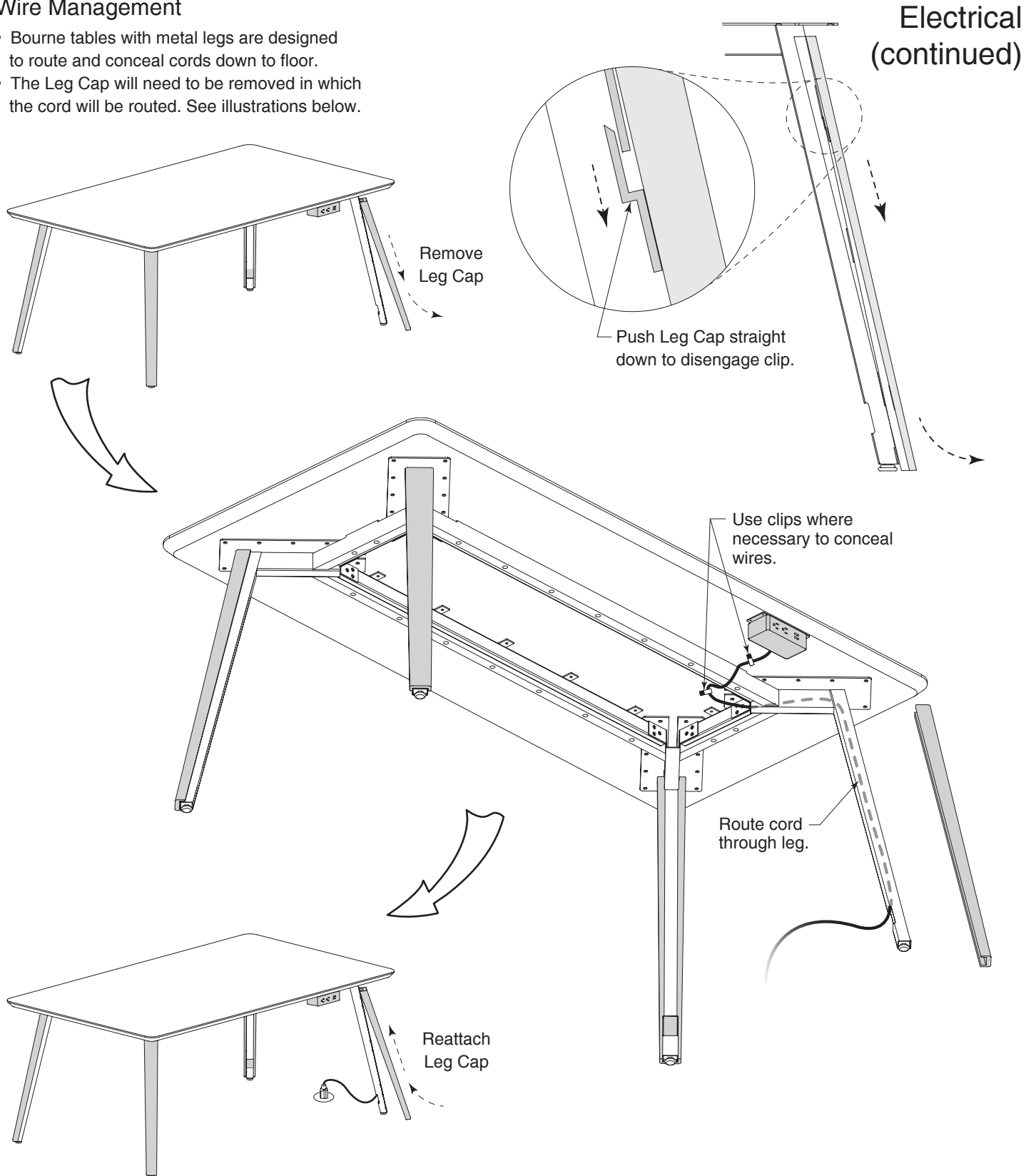


- Locate center of table.
- Position power unit in center of table from right to left and offset front of power unit back $\frac{1}{8}$ " from front edge of table.
- Mount using four supplied screws.

Notice To Installers: Failure to comply with installation instructions will compromise the safety, durability and performance of this product, which may risk injury to the user of this product and/or diminish the product life cycle. Jasper Group assumes no liability in these instances.

Wire Management

- Bourne tables with metal legs are designed to route and conceal cords down to floor.
- The Leg Cap will need to be removed in which the cord will be routed. See illustrations below.



Notice To Installers: Failure to comply with installation instructions will compromise the safety, durability and performance of this product, which may risk injury to the user of this product and/or diminish the product life cycle. Jasper Group assumes no liability in these instances.