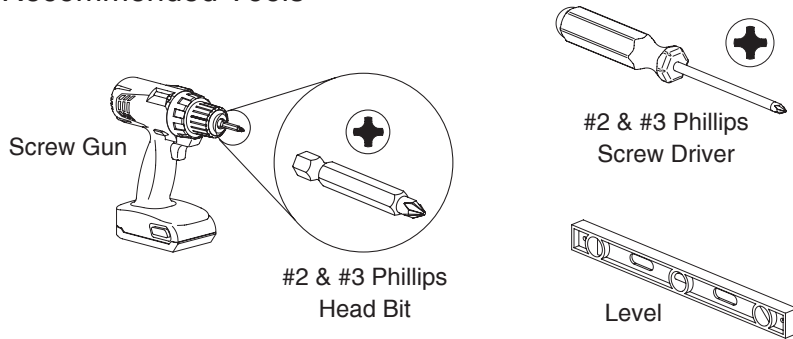
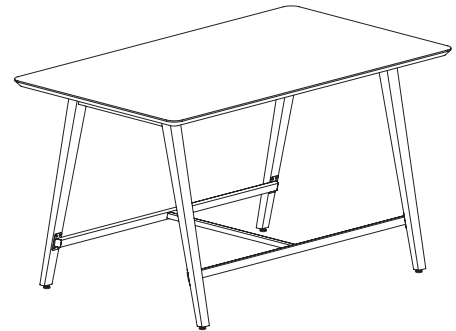


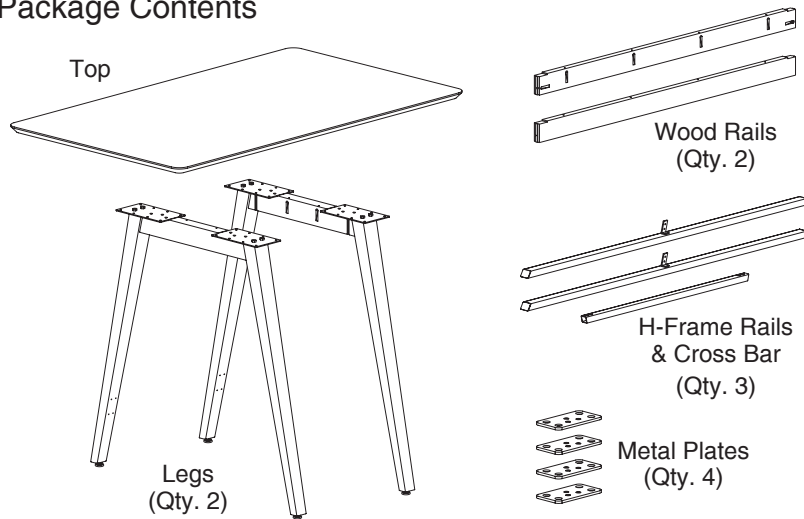
## Recommended Tools



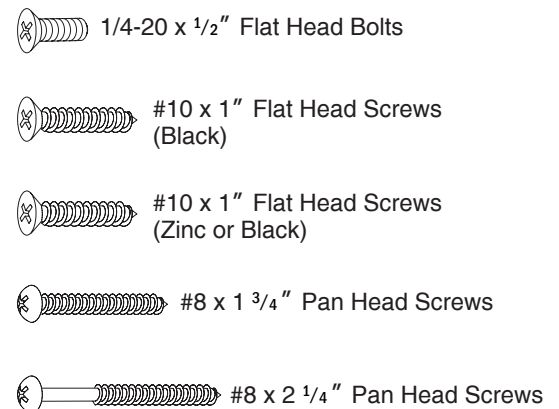
## Wood Table Assembly



## Package Contents



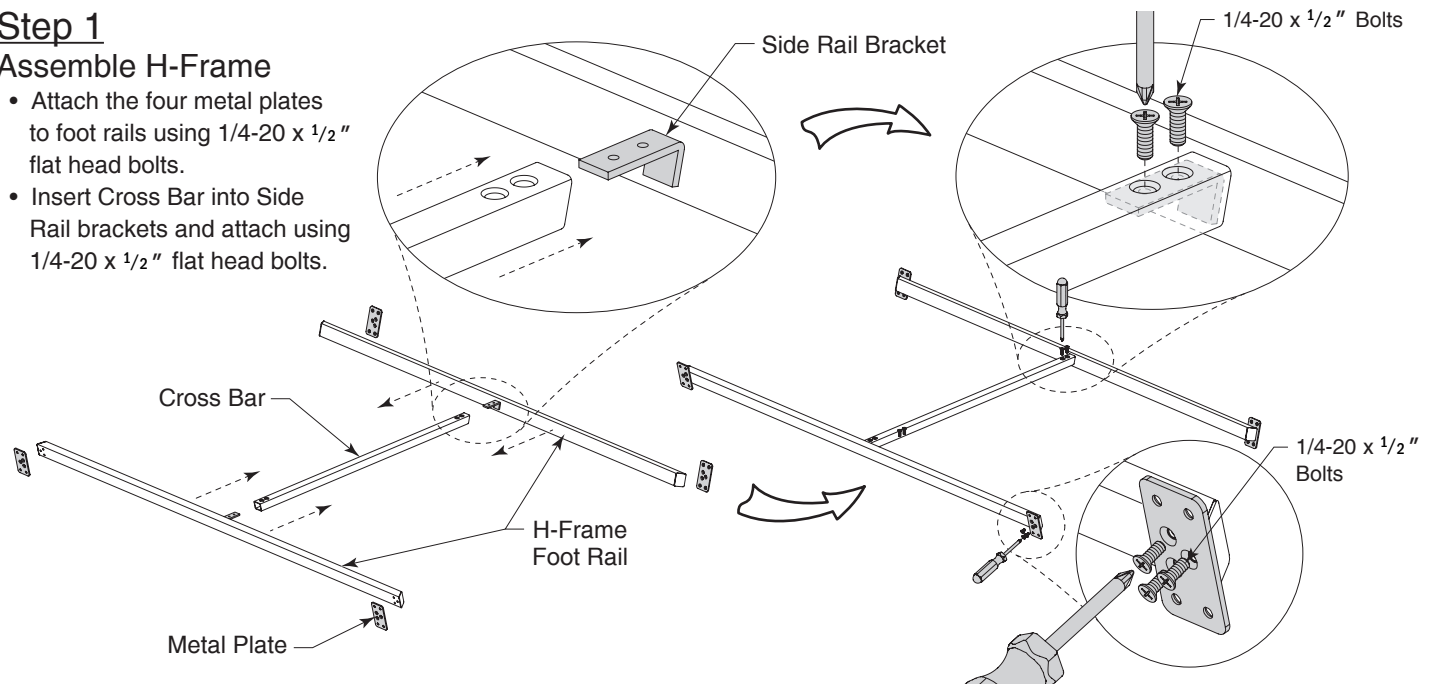
## Hardware Used



## Step 1

### Assemble H-Frame

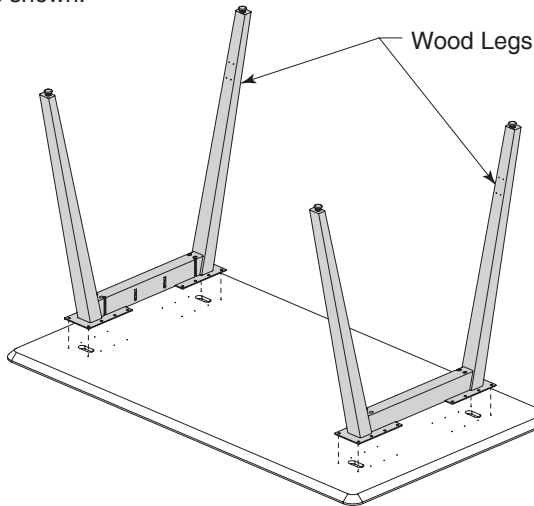
- Attach the four metal plates to foot rails using 1/4-20 x 1/2" flat head bolts.
- Insert Cross Bar into Side Rail brackets and attach using 1/4-20 x 1/2" flat head bolts.



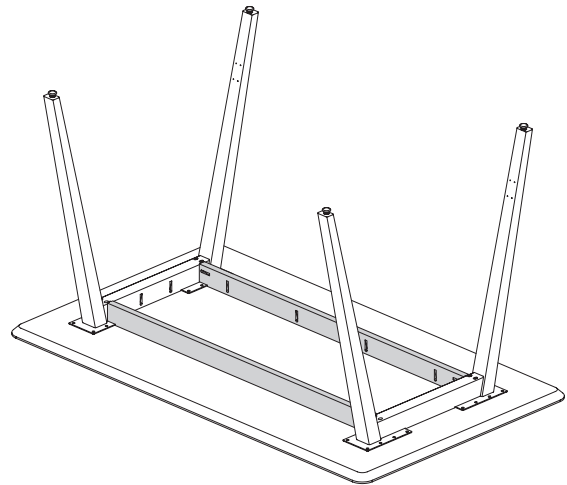
**Notice To Installers:** Failure to comply with installation instructions will compromise the safety, durability and performance of this product, which may risk injury to the user of this product and/or diminish the product life cycle. Jasper Group assumes no liability in these instances.

**Step 3****Position Legs in Place on Top**

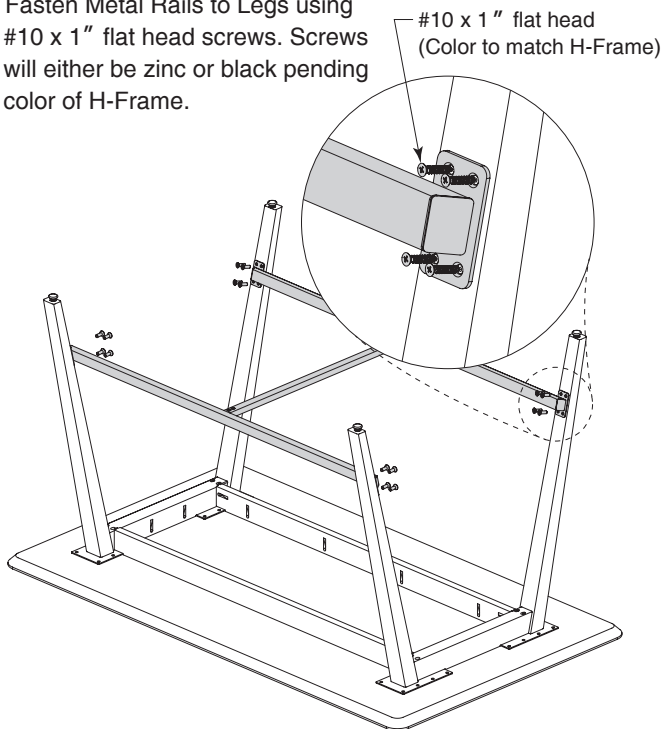
- Flip top upside down and lay on a flat smooth surface.
- Position Legs on the Top. Align holes in leg plates to pre-bored holes in Top as shown.

**Step 4****Position Wood Rails in Place Between Legs****Wood Table Assembly (continued)**

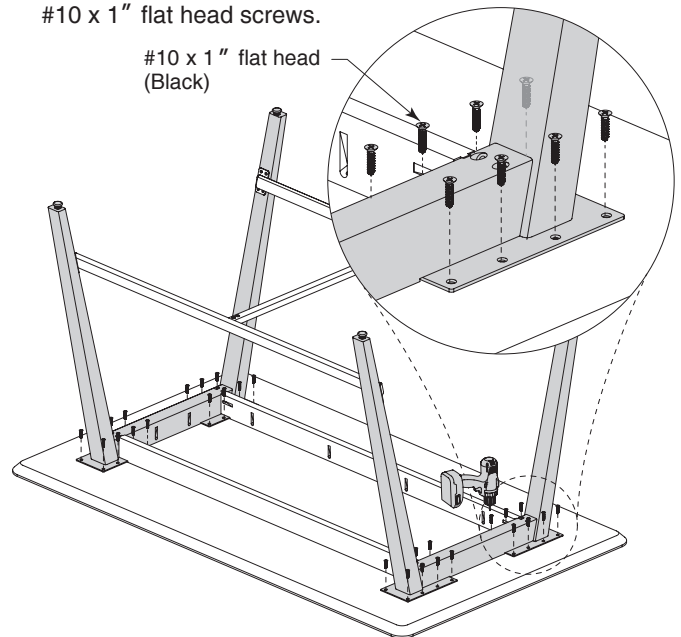
- Slide Wood Rails into slots in Legs as shown below.
- DO NOT fasten to Legs down at this point.

**Step 5****Attached H-Frame to Legs**

- Fasten Metal Rails to Legs using #10 x 1" flat head screws. Screws will either be zinc or black pending color of H-Frame.

**Step 6****Fasten Legs to Top**

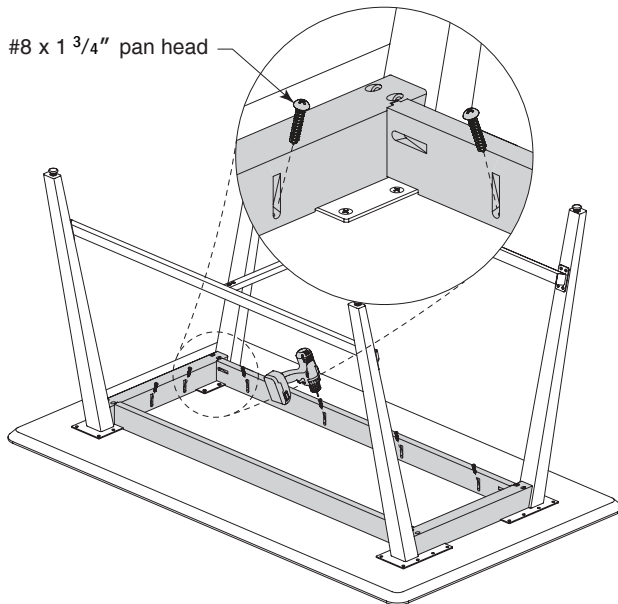
- Align holes in leg plates to pre-bored holes in Top.
- Fasten all four Legs to Top using #10 x 1" flat head screws.



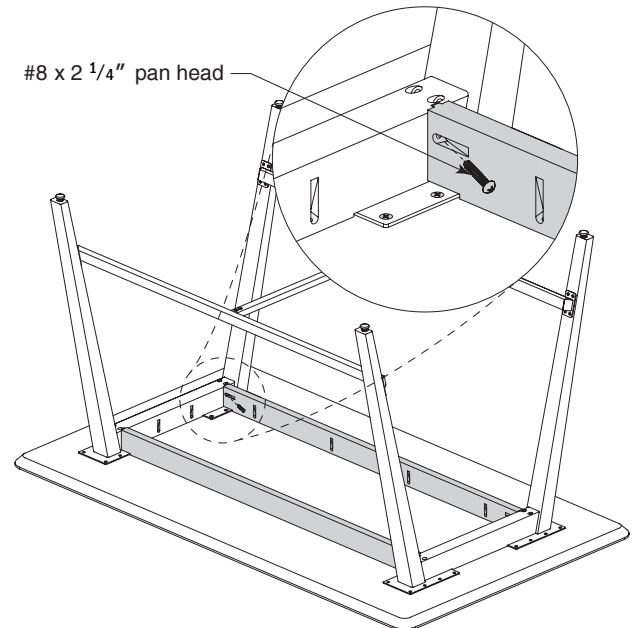
**Notice To Installers:** Failure to comply with installation instructions will compromise the safety, durability and performance of this product, which may risk injury to the user of this product and/or diminish the product life cycle. Jasper Group assumes no liability in these instances.

**Step 7****Fasten Wood Rails to Top**

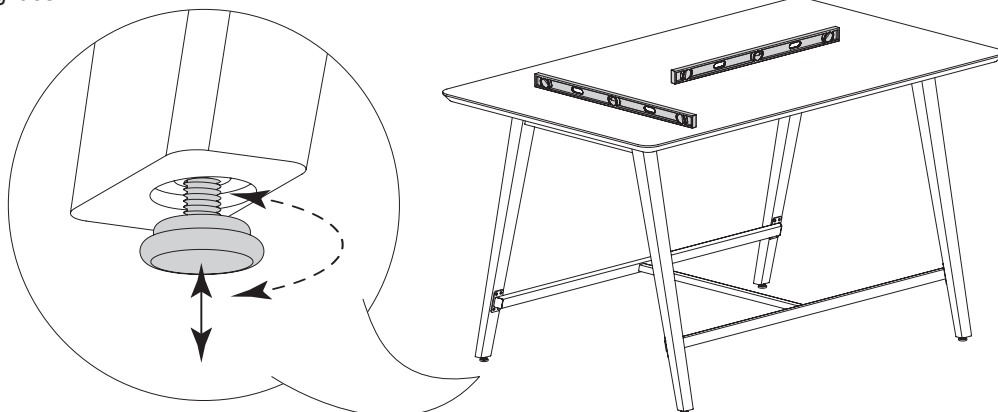
- Attach Wood Rails to Top using #8 x 1 3/4" pan head screws.

**Step 8****Fasten Wood Rails to Legs**

- Attach Wood Rails to Legs using #8 x 2 1/4" pan head screws.

**Wood Table Assembly (continued)****Step 9****Level Table**

- Carefully flip table upright.
- Level table front-to-back and side-to-side by rotating adjustable glides.



**Notice To Installers:** Failure to comply with installation instructions will compromise the safety, durability and performance of this product, which may risk injury to the user of this product and/or diminish the product life cycle. Jasper Group assumes no liability in these instances.