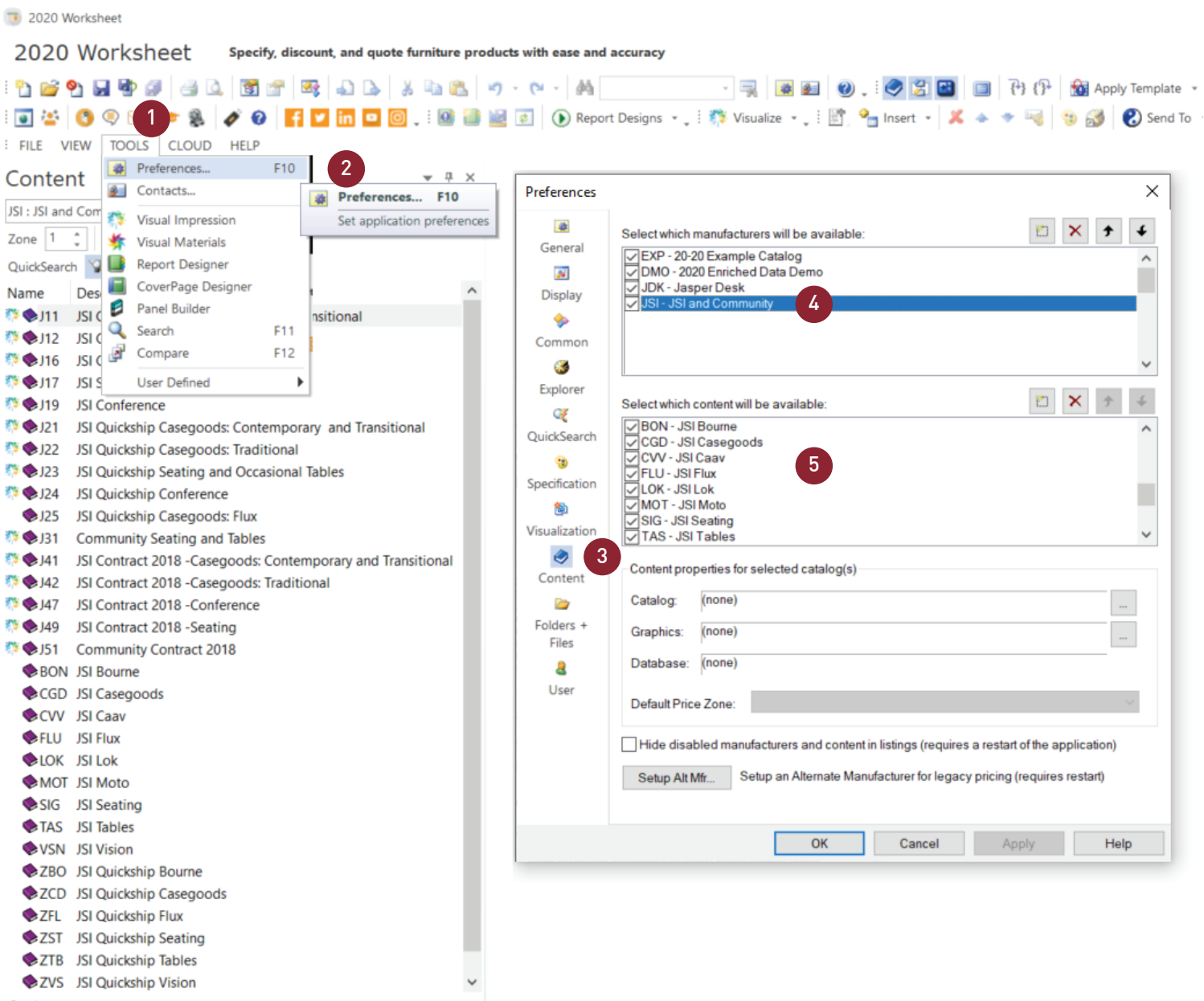


CLEANING UP THE CONTENT VIEW:

To reduce the clutter on the content index, it is best to remove the previous catalogs, which are now empty.

IN WORKSHEET:

- 1. Click the Tools drop down in the navigation menu
- 2. Select Preferences
- 3. Select the 8th tab down Content
- 4. In the top box, click on the label JSI - JSI and Community. Do not uncheck the box
By clicking on the label you will now see all of the sub-content in the second box
- 5. Uncheck the following manufacturer codes:
J11, J12, J16, J17, J19, J21, J22, J24, J25, J31
Make sure these codes are **still** checked in the second box:
J41, J42, J47, J49, J51, BON, CGD, CVV, FLU, LOK, MOT, SIG,TAS, VSN, ZBO, ZCD, ZFL, ZST, ZTB, ZVS



UPDATE THE QUICKSEARCH INDEX:

- 6. Select the 5th tab down QuickSearch
 - 7. Click Rebuild Index
 - 8. Click Update Index
- Each step may take some time, but they are important to ensure that the quicksearch finds models properly

