

FORGE BASE CABINETS

Install Instructions

Tools Required

- Pencil
- Tape Measure
- Laser Level
- Level (Small and Large)
- Small Crow Bar
- Hand Clamps
- Drill
- Drill Bit Sets and Screw Sets
- Circular Saw (w/Rip Fence) or Portable Table Saw

Hardware Included

- 4 - 5/8" Screws (per cabinet)
- 8 - 5/8" Screws (per filler)

Optional Hardware (provided by installer)

- 1-1/4" Screws (attach cabinets together)

Installation

1. Remove doors and drawers as shown in (Figure A).
2. Create a level reference point for the cabinets with a Laser Level. Set the Laser Level at the preferred height of the cabinets and add 2 inches to the height, as shown in (Figure B).
Standard heights are 32-1/2" and 35"
Tip : Always measure from the high point on the floor.
3. Place the first cabinet in desired location and level it with the laser line from Step 2. Level all 4 corners placing a tape measure on the top edge of the cabinet and measure 2 inches down from the laser line. (Figure C). Adjust the height of the cabinet using the adjustable levelers. Use a small crowbar to assist in lifting the cabinet to adjust the levelers.
4. After cabinet is leveled and in the correct location measure the distance between the cabinet and wall at the top and bottom of the end panel for the base filler panel (Figure C). *Optional: Mark the back wall with the end panel using a pencil to help realign the cabinet after filler panel is installed.*

Figure A

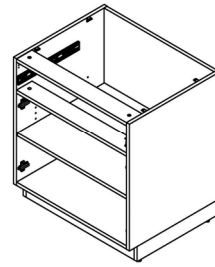


Figure B

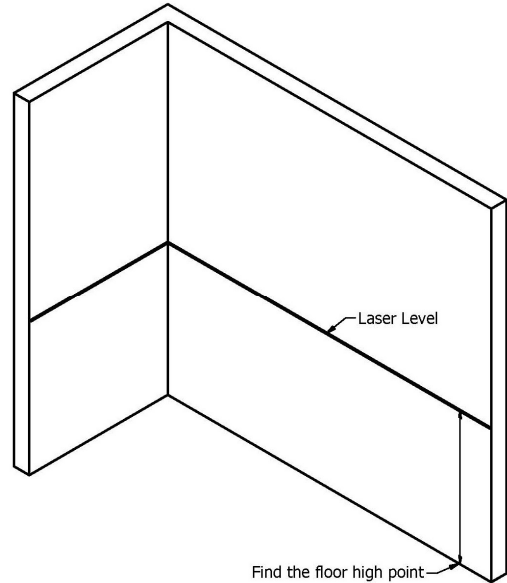
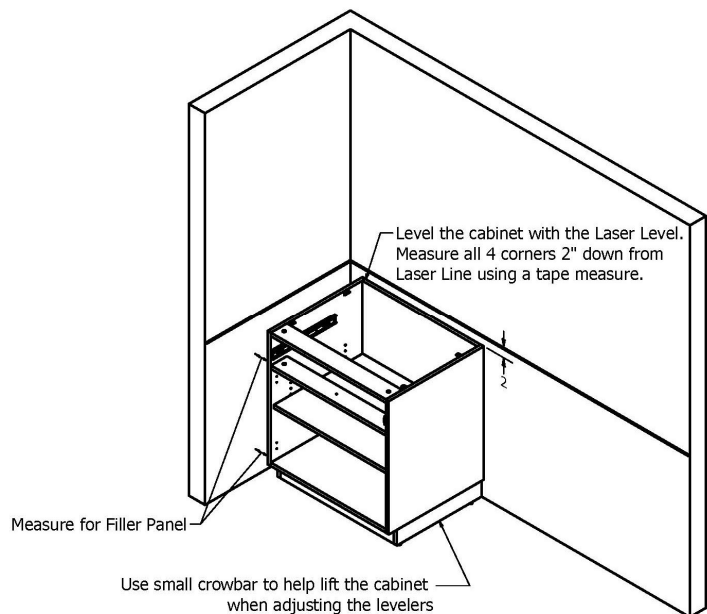


Figure C



FORGE BASE CABINETS

Install Instructions

5. Mark the Filler Panel with dimensions from Step 4, drawing a straight line between the dimensions (Figure D) Cut the panel along the line using a circular saw or portable table saw. *Note: Tape along cut line on front side of panel to prevent tear out.*
6. Remove the cabinet from the wall and attach the Filler Panel to the cabinet (Figure D). Make sure the Filler Panel is flush with the front edge of the End Panel. Attach using the provided L-brackets and 5/8" screws. *Note: Hand Clamps can be used to secure the Filler Panel during attachment to the cabinet.*
7. Place the first cabinet in position from Step 4. Make sure cabinet is in the correct location and make sure it is still level. Attach the cabinet to the wall screwing through the back panel into the substructure of the wall (Figure E). *Note: If no stud is available toggle anchors must be used. Drill holes in back panel, remove the cabinet from the wall and install the anchors to the wall using the drill holes. Replace the cabinet and fasten to wall.*
8. Place the next cabinet and level it using Step 3 above. Make sure the front and top edges are flush on both cabinets. Attach the cabinet to the wall using Step 7 above .

Optional: Cabinets can be attached by screwing 8 x 1-1/4 screws between the cabinets. In door cabinets, attach the screws just below the door hinges. In drawer cabinets, attach the screws above the slides. If using 2 open cabinets, attach screws 2" from top and bottom and inset 2". Use hand clamps between the cabinets to help support the cabinets when attaching.

Note: Fastening cabinets together will deface the end panels that are attached.

Figure D

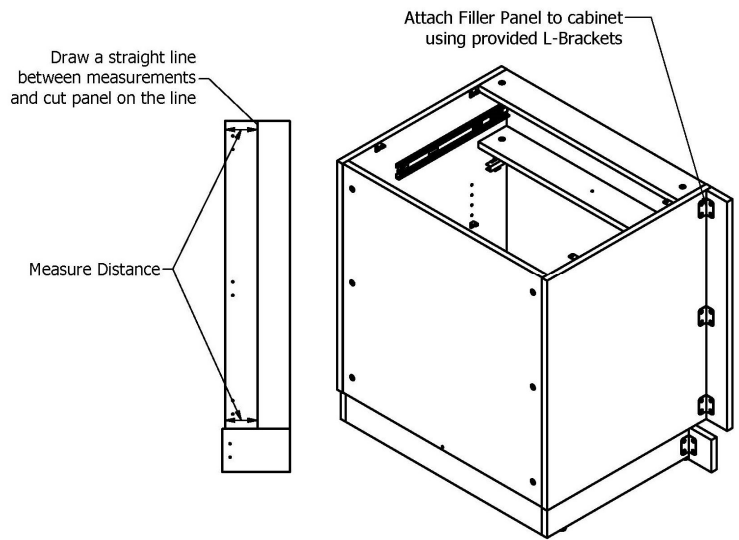
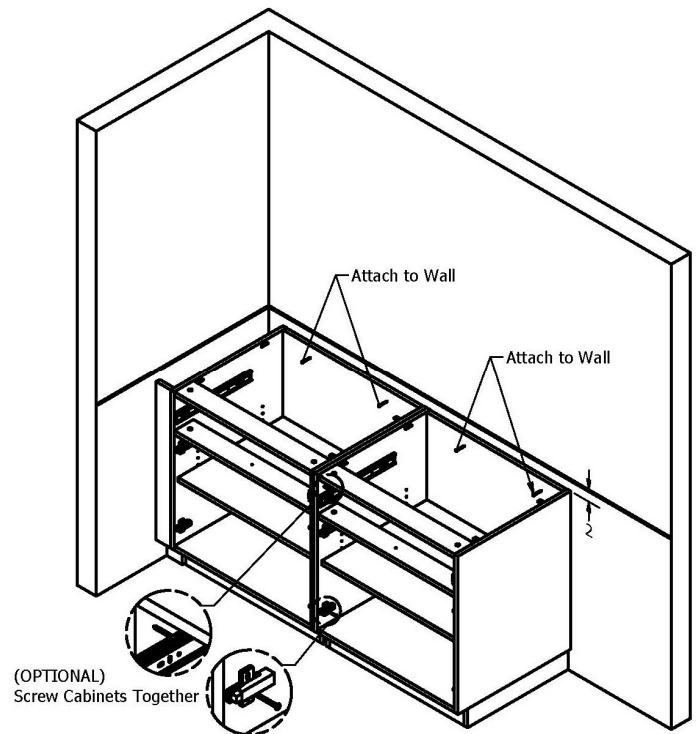


Figure E



FORGE BASE CABINETS

Install Instructions

9. To install a worksurface that doesn't require a field cut. Set the worksurface on the cabinet and align the top with the cabinet. Screw the worksurface to the cabinet using the 4 small L-Brackets in the cabinet and the provided 5/8" screws (Figure H).
10. To install a worksurface that requires a field cut. Measure for worksurface by measuring from the wall to cabinet end panel (Figure F). If cabinets are between walls, measure from wall to wall.
11. Measure the worksurface with dimensions from Step 10 and mark a line to cut (Figure G). Cut the worksurface to the correct size using a circular saw.
Tip: Always make sure the cut is going against the wall.
12. Install the worksurface using directions from Step 9 above.

Figure F

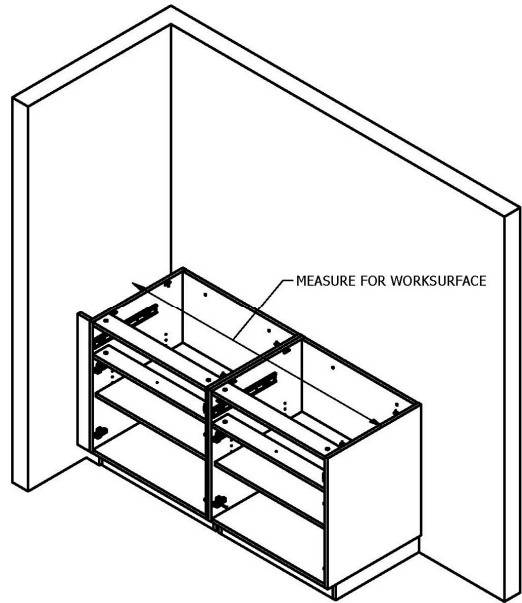


Figure G

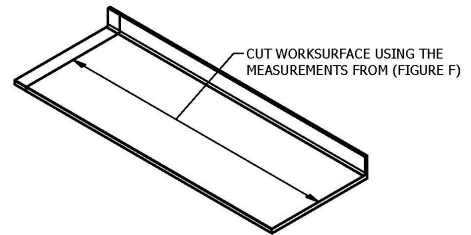
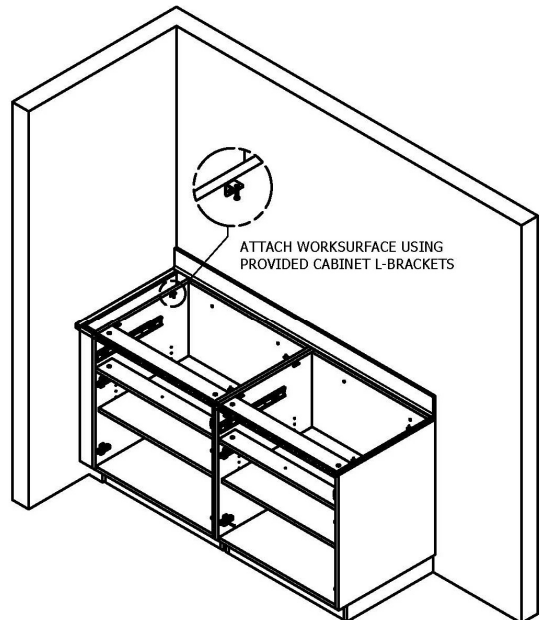


Figure H



FORGE BASE CABINETS

Install Instructions

13. If a Side Splash is used, attach it to the wall using customer provided silicone caulk (Figure I).
14. If a Laminate Toe Kick is used attach it to the cabinets using customer provided silicone caulk (Figure L).

Note: If the Laminate Toe Kick is between a wall and a cabinet or between walls, a field cut may be required.

15. If the Laminate Toe Kick needs to be field cut, measure the distance from the wall to the outside edge of the plinth base (Figure J). If the cabinets are between two walls measure between the walls.
16. Mark a line on the Toe Kick with dimensions from Step 15. Cut the panel along the line using a circular saw or portable table saw (Figure K).

Tip: Tape along cut line on front side of panel to prevent tear out.

17. Attach the Laminate Toe Kick to the cabinet using customer provided silicone caulk (Figure L).

ALL CABINETS MUST HAVE EITHER A LAMINATE TOE KICK OR CUSTOMER PROVIDED COVE BASE MOLDING.

18. Re-attach the drawers and doors.

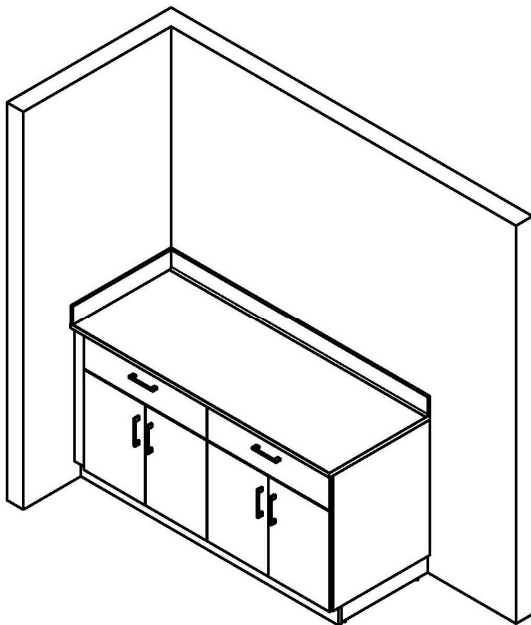


Figure I

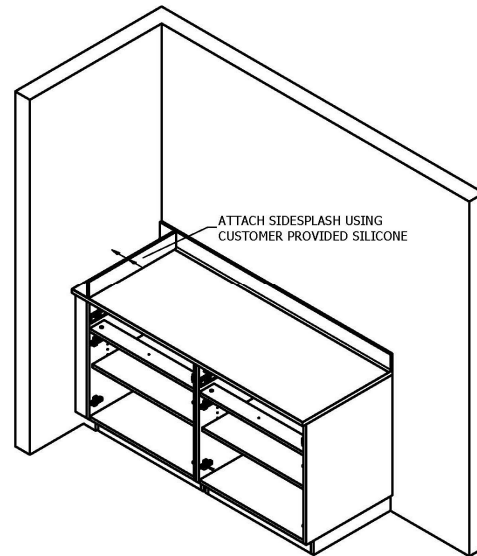


Figure J

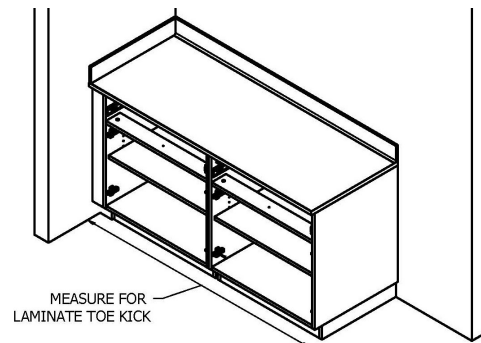


Figure K

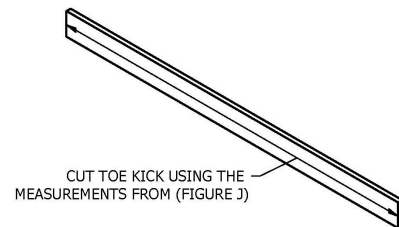


Figure L

