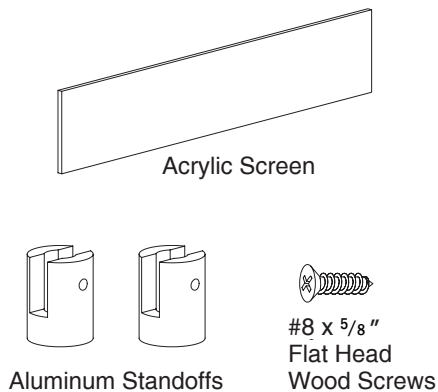
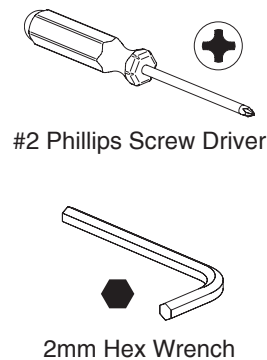


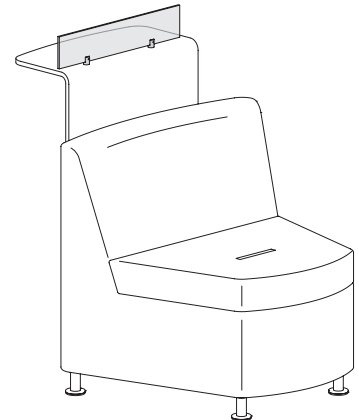
## Package Contents



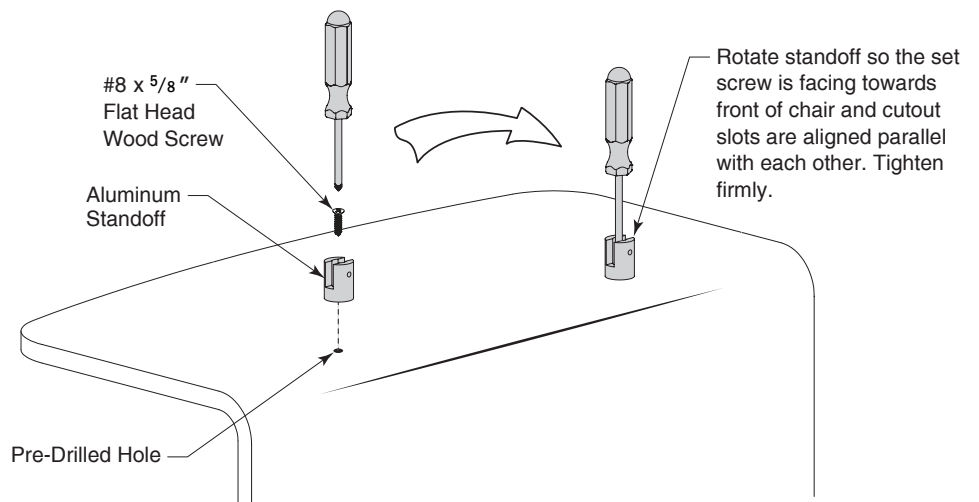
## Recommended Tools



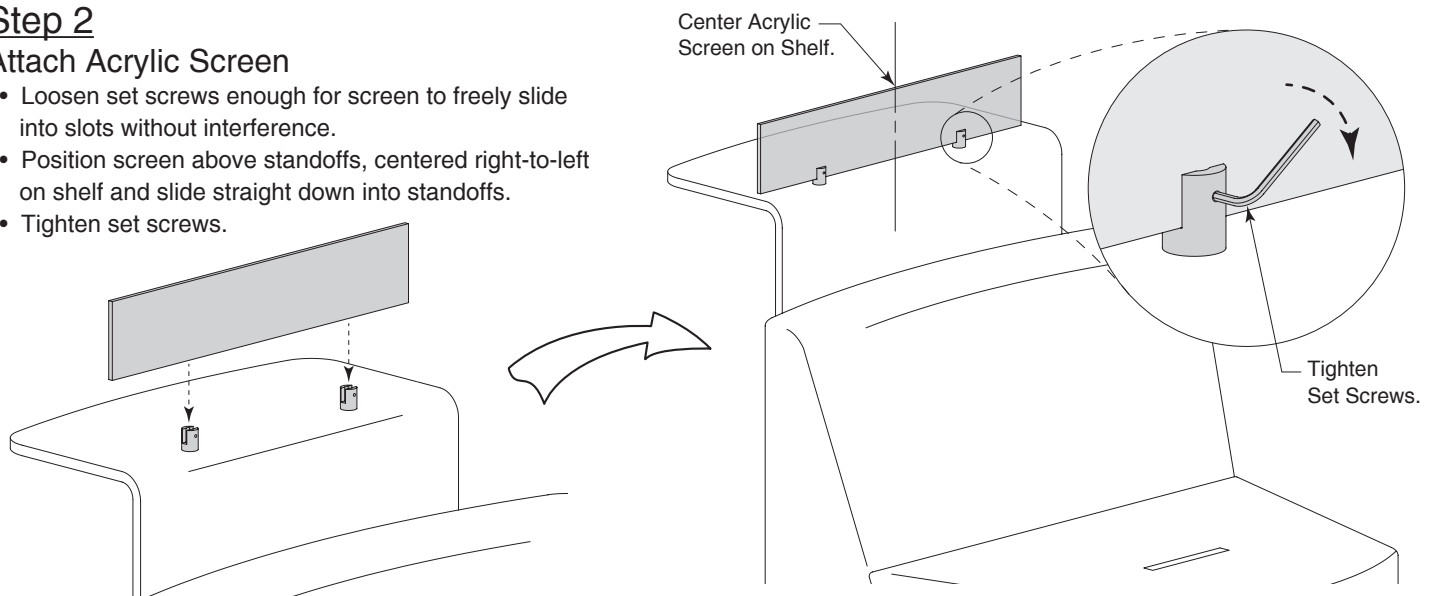
## Acrylic Screen

**Step 1****Attach Aluminum Standoffs to Rear Shelf**

- Locate the two pre-drilled holes on top of Rear Shelf.
- Attach standoffs to shelf using #8 x 5/8" flat head screws. Rotate each standoff so that the set screw is facing towards front of chair and cutout slots are aligned parallel with each other.
- Tighten firmly.

**Step 2****Attach Acrylic Screen**

- Loosen set screws enough for screen to freely slide into slots without interference.
- Position screen above standoffs, centered right-to-left on shelf and slide straight down into standoffs.
- Tighten set screws.



**Notice To Installers:** Failure to comply with installation instructions will compromise the safety, durability and performance of this product, which may risk injury to the user of this product and/or diminish the product life cycle. Jasper Group assumes no liability in these instances.