

\*\*\*IF TOP HAS SAG, SEE "INSTALLING ANTI-SAG CLIPS" BEFORE SCREWING TO TOP\*\*\*

1. PLACE THE ATTACHMENT BOLT & WASHER THRU THE TOP TO EXTRUSION BRACKET. BOLT HEAD & WASHER SHOULD BE TO THE INSIDE OF BRACKET.
2. THREAD EXTRUSION PLATE INSERT TO ATTACHMENT BOLTS. DO NOT TIGHTEN.
3. REPEAT TO ALL BRACKETS INCLUDED.
4. SLIDE EXTRUSION PLATE INSERTS INTO EXTRUSION. EQUALLY DISTRIBUTE AMONG ALL EXTRUSIONS.

SAVE SCREWS TO ATTACH TOP FOR LATER STEP

# EXTRUSION TO TOP ATTACHMENT ASSEMBLY

PART #: ASSEMBLY

DESCRIPTION: EXTRUSION TO TOP ATTACHMENT

Copyright Notice:

The concepts, designs, details, ETC, shown on this document are the property of Jasper Sealing Company, Inc. and were created for the use on this specific project. None of this information shall be used by any person or firm for any purpose without the express written consent of Jasper Sealing Company, Inc. The owner may retain copies for information and reference in connection only with this project.



**JASPER  
GROUP**



SCALE  
DO NOT SCALE

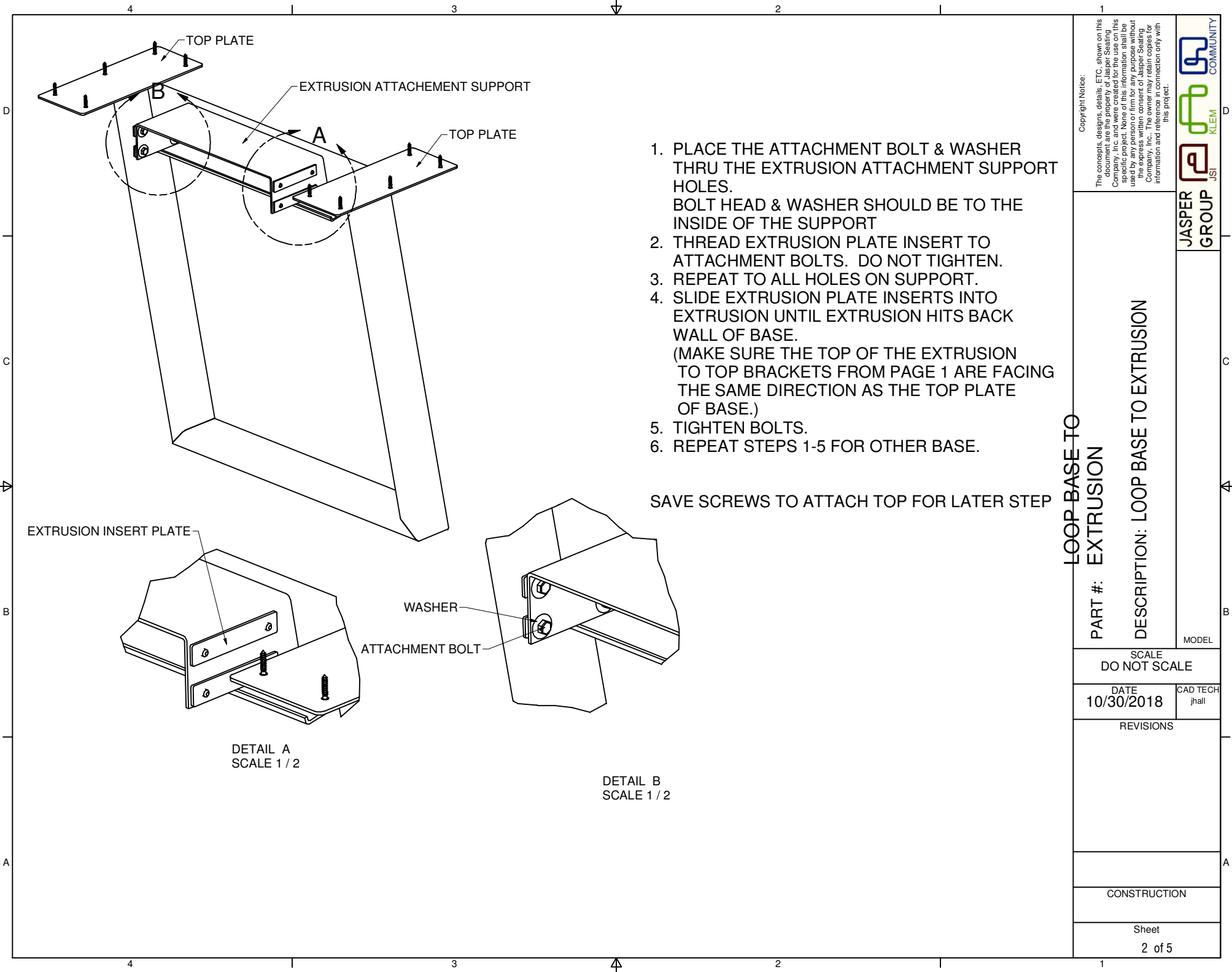
DATE  
10/30/2018

CAD TECH  
jhall

## REVISIONS

## CONSTRUCTION

Sheet  
1 of 5



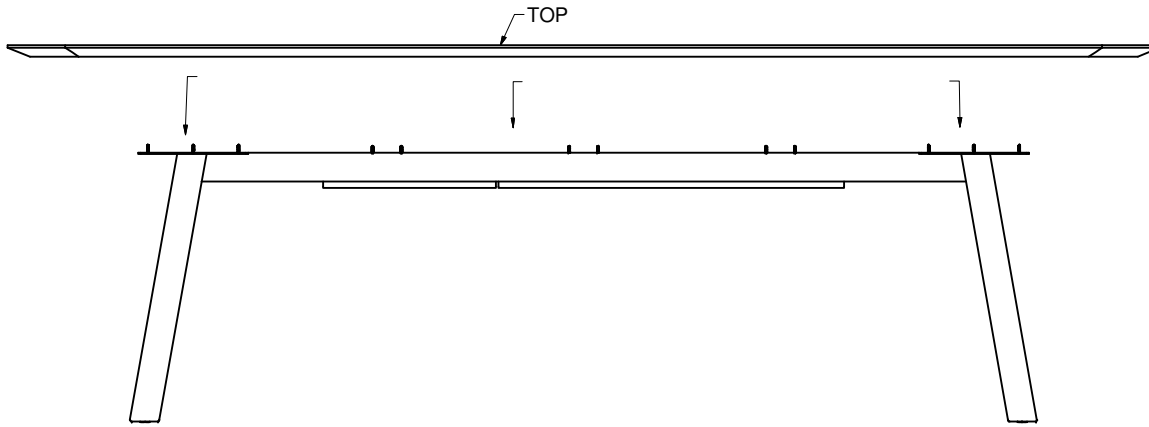
Copyright Notice:  
The concepts, designs, details, ETC, shown on this drawing are the property of Jasper Seating Company, Inc. and were created for the use on this specific project. None of this information shall be used by any person or firm for any purpose without the express written consent of Jasper Seating Company, Inc. The owner may retain copies for information and reference in connection only with this project.

LOOP BASE TO  
PART #: EXTRUSION  
DESCRIPTION: LOOP BASE TO EXTRUSION

SCALE DO NOT SCALE	
DATE 10/30/2018	CAD TECH jhall
REVISIONS	
CONSTRUCTION	
Sheet 2 of 5	

JASPER GROUP

MODEL



1. PLACE TOP ABOVE BASE ASSEMBLY.  
LINE UP HOLES ON BASE PLATES WITH  
PRE-DRILLED HOLES ON TOP.  
SCREW TOGETHER WITH SCREWS PROVIDED.
2. SLIDE TOP CONNECTING BRACKETS SO THEY  
ARE EQUALLY SPACED. (UNLESS POWER UNIT  
RESTRICTS THIS, IF SO, PLACE AS CLOSE TO  
MIDPOINT OF TOP AND AS CLOSE TO BASES  
AS POSSIBLE.) TIGHTEN BOLTS
3. IF TOP DOES NOT SAG, SCREW TOP BRACKETS TO TOP WITH  
SCREWS PROVIDED. IF TOP HAS SAG, SEE "INSTALLING  
ANTI-SAG STRIPS" BEFORE SCREWING DOWN TOP.

## LOOP-BASE TOP

### PART #: ATTACHMENT

DESCRIPTION: LOOP-BASE TOP ATTACHMENT

MODEL

SCALE DO NOT SCALE	
DATE 10/30/2018	CAD TECH jhall
REVISIONS	
CONSTRUCTION	
Sheet 3 of 5	

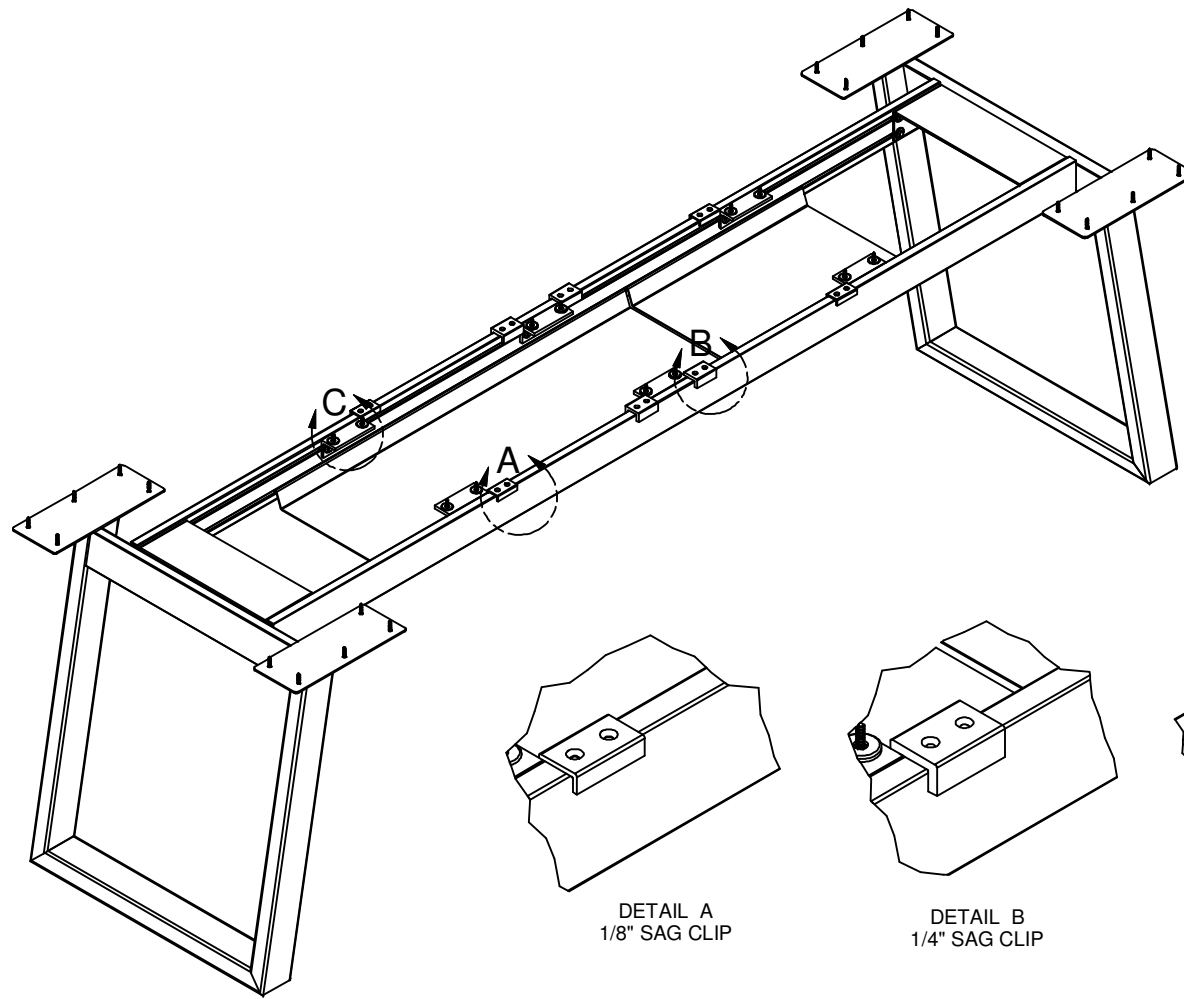
Copyright Notice:

The concepts, designs, details, ETC, shown on this drawing are the property of Jasper Seating Company, Inc. and were created for the use on this specific project. None of this information shall be used by any person or firm for any purpose without the express written consent of Jasper Seating Company, Inc. The owner may retain copies for information and reference in connection only with this project.



JASPER  
GROUP





DETAIL A  
1/8" SAG CLIP

DETAIL B  
1/4" SAG CLIP

DETAIL C  
WASHERS ADDED TO  
TOP OF TOP ATTACHMENT  
BRACKET TO OFFSET CLIPS

**IF TOP IS SAGGING IN MIDDLE:**

1. REMOVE TOP
2. LOCATED PROVIDED ANTI-SAG CLIPS
3. PLACE 1/8" CLIPS NEAR THE BASE & 1/4" CLIPS NEAR THE CENTER OF TOP
4. USE WASHERS TO OFFSET THE THICKNESS OF THE CLIPS ON THE TOP ATTACHMENT BRACKETS NEAR CLIPS.
5. APPLY TOP & CHECK FOR SAG. WHEN CLIPS ARE IN FINAL POSITION, THEY MAY BE FASTENED TO THE EXTRUSION WITH THE SELF-TAPPING SCREWS PROVIDED.

**PART #:** Anti-Sag Clips

**DESCRIPTION:** INSTALLING ANTI-SAG STRIPS

Copyright Notice:

The concepts, designs, details, ETC, shown on this drawing are the property of Jasper Group, Inc. and were created for the use on this specific project. None of this information shall be used by any person or firm for any purpose without the express written consent of Jasper Group, Inc. The owner may retain copies for information and reference in connection only with this project.

JASPER  
GROUP



SCALE  
DO NOT SCALE

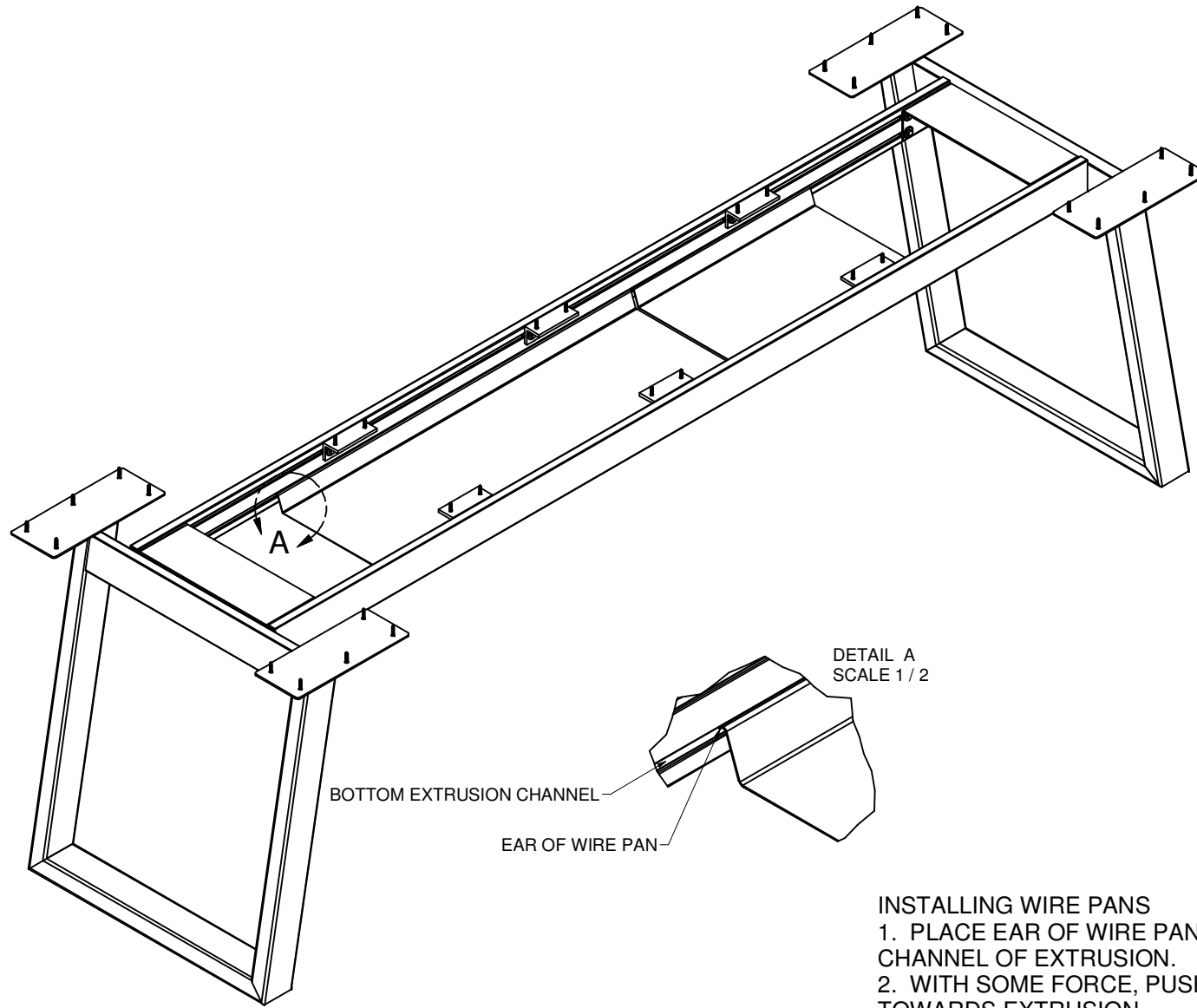
DATE  
12/13/2018

CAD TECH  
jhall

REVISIONS

CONSTRUCTION

Sheet  
4 of 5



DETAIL A  
SCALE 1 / 2

BOTTOM EXTRUSION CHANNEL

EAR OF WIRE PAN

**INSTALLING WIRE PANS**  
 1. PLACE EAR OF WIRE PAN INTO BOTTOM CHANNEL OF EXTRUSION.  
 2. WITH SOME FORCE, PUSH WIRE PAN TOWARDS EXTRUSION EAR WAS JUST APPLIED TO. PAN SHOULD BE SPRUNG UNTIL IT WILL GO INTO EXTRUSION CHANNEL ON OPPOSITE SIDE.

# WIRE TRAY

## PART #: ATTACHMENT

DESCRIPTION: WIRE TRAY ATTACHMENT

Copyright Notice:  
 The concepts, designs, details, ETC, shown on this drawing are the property of Jasper Seating Company, Inc. and were created for the use on this specific project. None of this information shall be used by any person or firm for any purpose without the express written consent of Jasper Seating Company, Inc. The owner may retain copies for information and reference in connection only with this project.



SCALE DO NOT SCALE	
DATE 10/30/2018	CAD TECH jhall
REVISIONS	
CONSTRUCTION	
Sheet 5 of 5	