

Copyright Notice:
The concepts, designs, details, ETC, shown on this drawing are the property of Jasper Sealing Company, Inc. and were created for the use on this specific project. None of this information shall be used by any person or firm for any purpose without the express written consent of Jasper Sealing Company, Inc. The owner may retain copies for information and reference in connection only with this project.

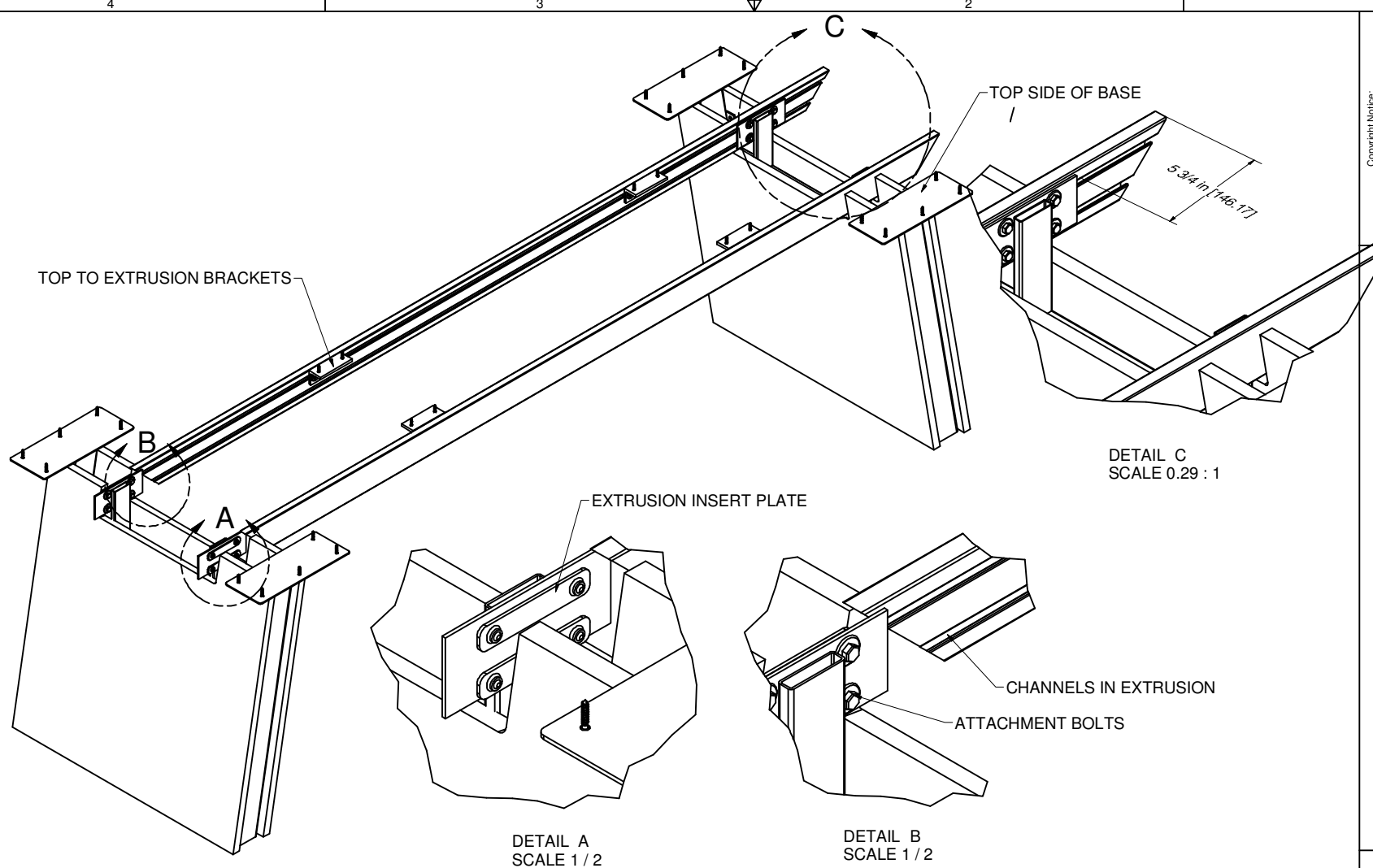


EXTRUSION TO TOP ATTACHMENT

PART #: ASSEMBLY
DESCRIPTION: EXTRUSION TO TOP ATTACHMENT

JASPER GROUP	MODEL
-----------------	-------

SCALE DO NOT SCALE	
DATE 10/30/2018	CAD TECH jhall
REVISIONS	
CONSTRUCTION	
Sheet 1 of 6	



Copyright Notice:
The concepts, designs, details, ETC, shown on this drawing are the property of Jasper Sealing Company, Inc. and were created for the use on this specific project. None of this information shall be used by any person or firm for any purpose without the express written consent of Jasper Sealing Company, Inc. The owner may retain copies for information and reference in connection only with this project.

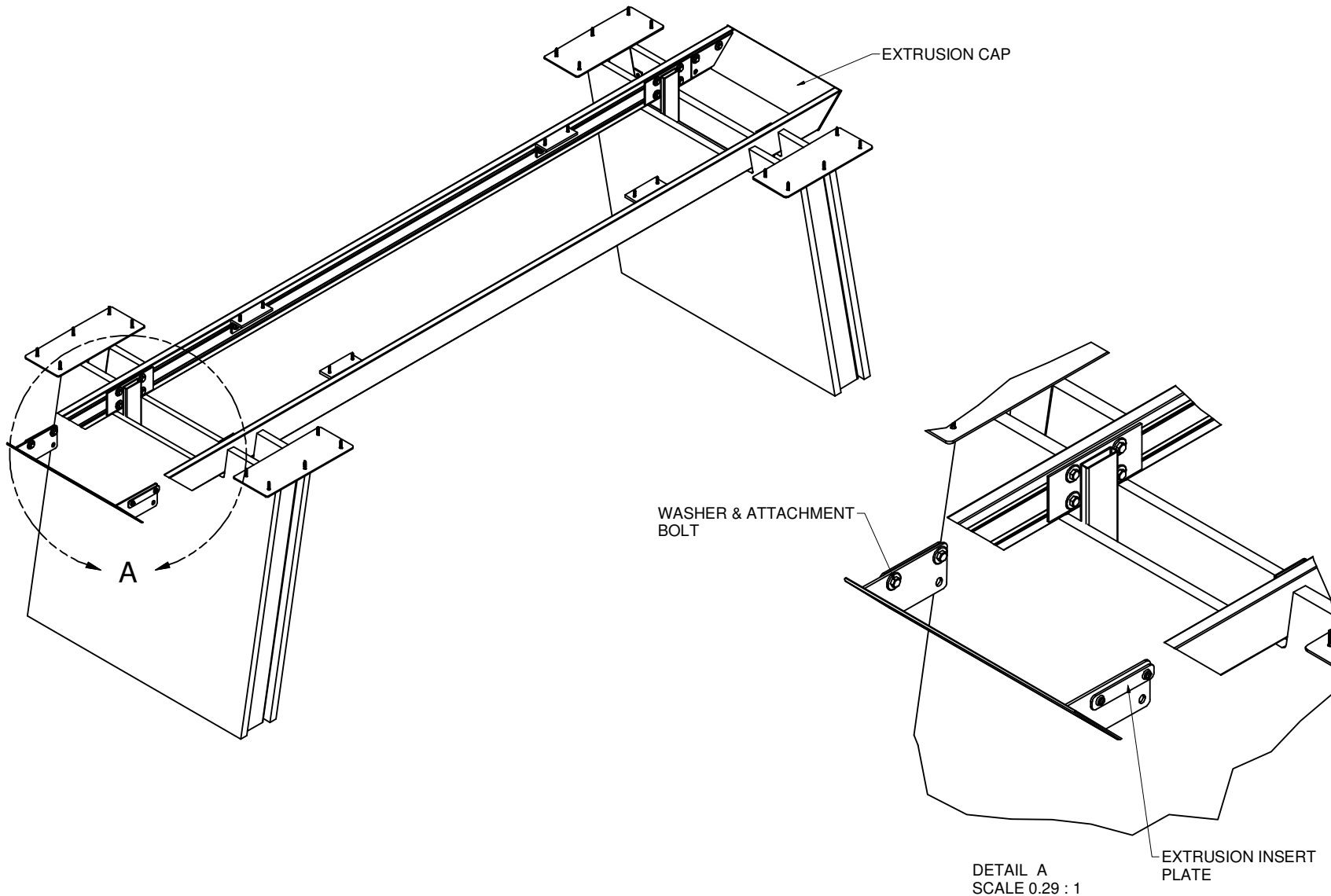


PART #: Panel base-to-extrusion
DESCRIPTION: PANEL BASE TO EXTRUSION

JASPER GROUP
MODEL

SCALE	
DO NOT SCALE	
DATE	CAD TECH
1/2/2019	jhall
REVISIONS	
CONSTRUCTION	
Sheet	
2 of 6	

- MULTIPLE PEOPLE NEEDED TO COMPLETE THIS STEP.
FOR EASE OF INSTALLATION, COMPLETE THIS STEP WITH TOP SIDE OF BASE DOWN.
"EXTRUSION TO TOP ATTACHEMENT" NEEDS TO BE COMPLETED BEFORE STARTING ON THIS STEP.
1. LOOSELY ATTACH THE EXTRUSION INSERT PLATE TO BASE THRU HOLES IN THE UPRIGHT PLATE. PLATE SHOULD BE TO THE OUTSIDE OF PLATE. SEE DETAIL A. DO NOT OVER TIGHTEN.
 2. SLIDE THE EXTRUSION THRU THE BASE BY SLIDING THE EXTRUSION INSERT PLATES JUST INSTALLED UTILIZING THE CHANNELS IN THE EXTRUSION.
 3. MEASURE THE BACK SIDE OF UPRIGHT PLATE TO TIP OF EXTRUSION. MOVE TO 5-3/4". TIGHTEN ATTACHMENT BOLTS. SEE SECTION C. THIS WILL PUT BASE AT PRE-BORED LOCATION OF TOP.
 4. REPEAT FOR OTHER SIDE.



1. LOOSELY TIGHTEN THE EXTRUSION INSERT PLATE TO THE EXTRUSION CAP THRU THE TOP 2 HOLES IN THE EXTRUSION CAP. EXTRUSION INSERT PLATES SHOULD BE FACING THE OUTSIDE OF CAP.
2. SLIDE THE EXTRUSION INSERT PLATES INTO THE CHANNELS OF THE EXTRUSION UNTIL THE EXTRUSION CAP COMES INTO CONNECT WITH THE EXTRUSION.
3. TIGHTEN BOLTS.
4. REPEAT FOR OTHER SIDE.

Copyright Notice:

The concepts, designs, details, ETC, shown on this drawing are the property of Jasper Sealing Company, Inc. and were created for the use on this specific project. None of this information shall be used by any person or firm for any purpose without the express written consent of Jasper Sealing Company, Inc. The owner may retain copies for information and reference in connection only with this project.



PART #: extrusion cap assembly
DESCRIPTION: EXTRUSION CAP ASSEMBLY

JASPER
GROUP

MODEL

SCALE
DO NOT SCALE

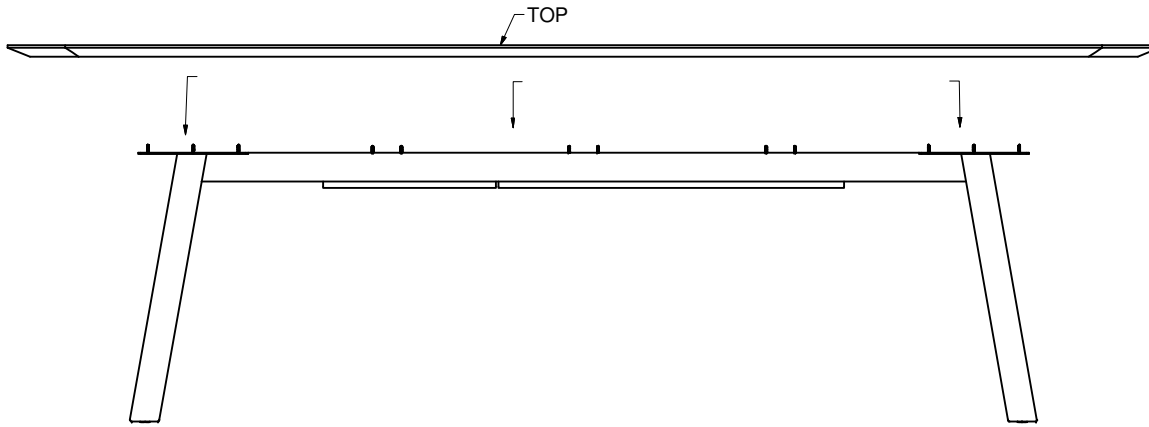
DATE
1/2/2019

CAD TECH
jhall

REVISIONS

CONSTRUCTION

Sheet
3 of 6



1. PLACE TOP ABOVE BASE ASSEMBLY.
LINE UP HOLES ON BASE PLATES WITH
PRE-DRILLED HOLES ON TOP.
SCREW TOGETHER WITH SCREWS PROVIDED.
2. SLIDE TOP CONNECTING BRACKETS SO THEY
ARE EQUALLY SPACED. (UNLESS POWER UNIT
RESTRICTS THIS, IF SO, PLACE AS CLOSE TO
MIDPOINT OF TOP AND AS CLOSE TO BASES
AS POSSIBLE.) TIGHTEN BOLTS
3. IF TOP DOES NOT SAG, SCREW TOP BRACKETS TO TOP WITH
SCREWS PROVIDED. IF TOP HAS SAG, SEE "INSTALLING
ANTI-SAG STRIPS" BEFORE SCREWING DOWN TOP.

LOOP-BASE TOP

PART #: ATTACHMENT

DESCRIPTION: LOOP BASE TOP ATTACHMENT

MODEL

SCALE
DO NOT SCALE

DATE
10/30/2018

CAD TECH
jhall

REVISIONS

CONSTRUCTION

Sheet
4 of 6

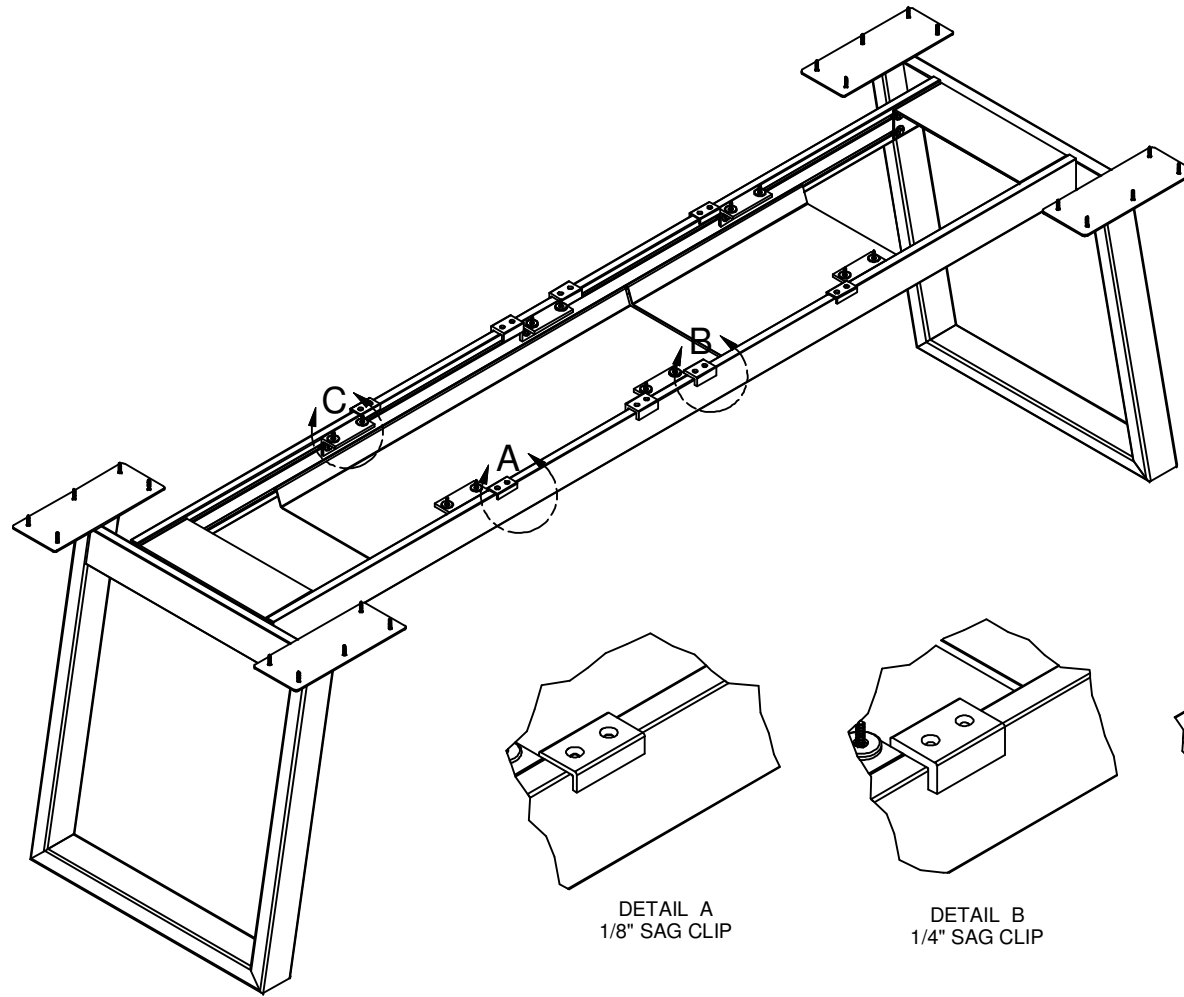
Copyright Notice:

The concepts, designs, details, ETC, shown on this drawing are the property of Jasper Seating Company, Inc. and were created for the use on this specific project. None of this information shall be used by any person or firm for any purpose without the express written consent of Jasper Seating Company, Inc. The owner may retain copies for information and reference in connection only with this project.



JASPER
GROUP





DETAIL A
1/8" SAG CLIP

DETAIL B
1/4" SAG CLIP

DETAIL C
WASHERS ADDED TO
TOP OF TOP ATTACHMENT
BRACKET TO OFFSET CLIPS

IF TOP IS SAGGING IN MIDDLE:

1. REMOVE TOP
2. LOCATED PROVIDED ANTI-SAG CLIPS
3. PLACE 1/8" CLIPS NEAR THE BASE & 1/4" CLIPS NEAR THE CENTER OF TOP
4. USE WASHERS TO OFFSET THE THICKNESS OF THE CLIPS ON THE TOP ATTACHMENT BRACKETS NEAR CLIPS.
5. APPLY TOP & CHECK FOR SAG. WHEN CLIPS ARE IN FINAL POSITION, THEY MAY BE FASTENED TO THE EXTRUSION WITH THE SELF-TAPPING SCREWS PROVIDED.

PART #: Anti-Sag Clips

DESCRIPTION: INSTALLING ANTI-SAG STRIPS

Copyright Notice:

The concepts, designs, details, ETC, shown on this drawing are the property of Jasper Group, Inc. and were created for the use on this specific project. None of this information shall be used by any person or firm for any purpose without the express written consent of Jasper Group, Inc. The owner may retain copies for information and reference in connection only with this project.

JASPER
GROUP



SCALE
DO NOT SCALE

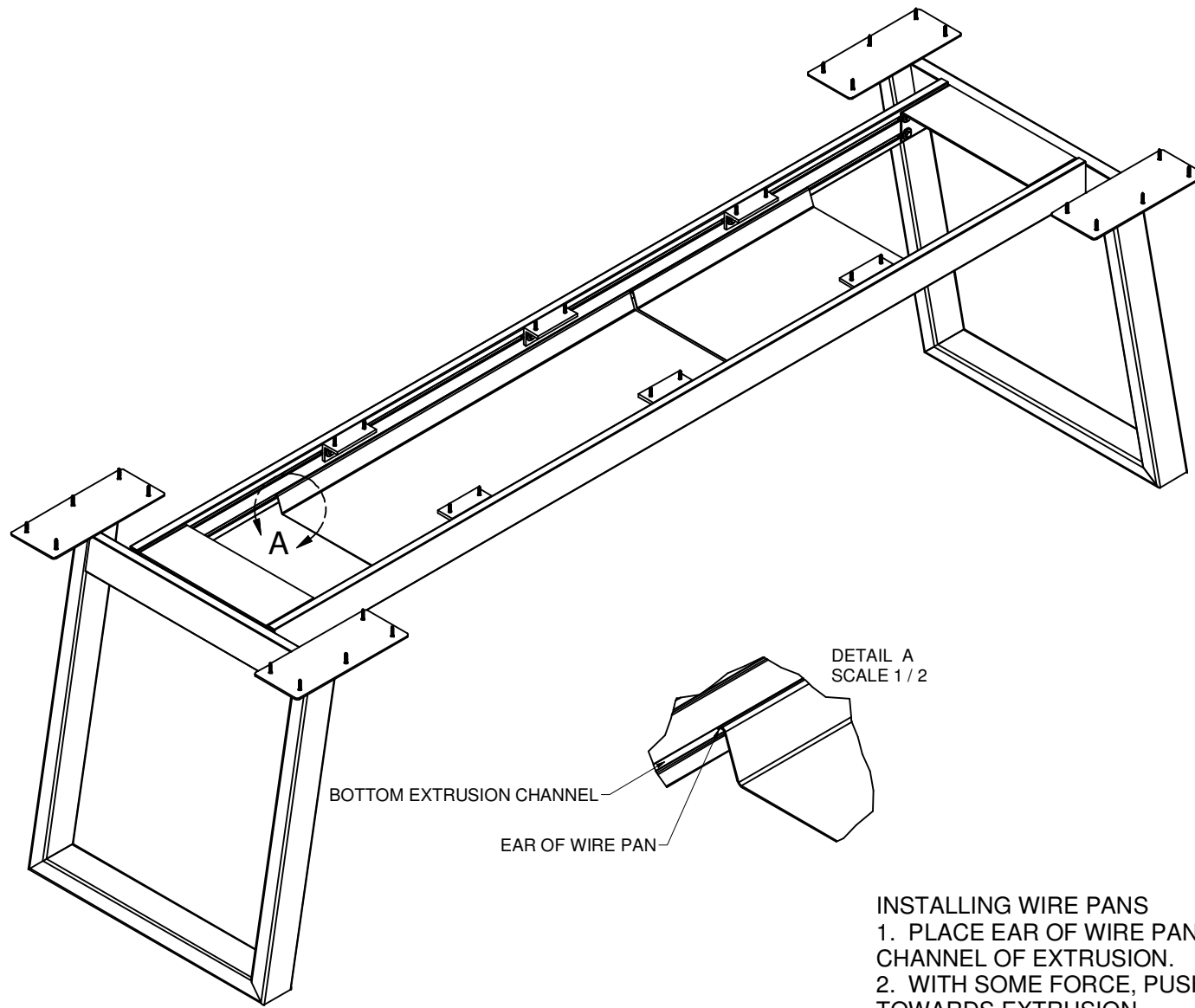
DATE
12/13/2018

CAD TECH
jhall

REVISIONS

CONSTRUCTION

Sheet
5 of 6



DETAIL A
SCALE 1 / 2

INSTALLING WIRE PANS
 1. PLACE EAR OF WIRE PAN INTO BOTTOM CHANNEL OF EXTRUSION.
 2. WITH SOME FORCE, PUSH WIRE PAN TOWARDS EXTRUSION EAR WAS JUST APPLIED TO. PAN SHOULD BE SPRUNG UNTIL IT WILL GO INTO EXTRUSION CHANNEL ON OPPOSITE SIDE.

WIRE TRAY
PART #: ATTACHMENT

DESCRIPTION: WIRE TRAY ATTACHMENT

Copyright Notice:
 The concepts, designs, details, ETC, shown on this drawing are the property of Jasper Seating Company, Inc. and were created for the use on this specific project. None of this information shall be used by any person or firm for any purpose without the express written consent of Jasper Seating Company, Inc. The owner may retain copies for information and reference in connection only with this project.



SCALE DO NOT SCALE	
DATE 10/30/2018	CAD TECH jhall
REVISIONS	
CONSTRUCTION	
Sheet 6 of 6	