

# SOMNA EC49 UNDER SURFACE MOUNT ELECTRICAL UNIT

## Install Instructions

### Tools Required

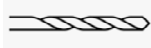
- Cordless Drill



- #2 Phillips Drive Bit



- 1/8" Diameter Drill Bit



- Tape Measure



### Hardware Included

- Qty of (5) - #8 x 1" Pan Head Phillips Drive Screws
- Qty of (1) - Plastic "P" Cable Wire Management Clip

### Installation

**Note:** Due to the product weight, it is recommended two or more people help with the installation of the EC49 under surface mount electrical unit.

1. Identify the product's installation location. A minimum of 6 ft x 10 ft of open floor space will be required for assembly.
2. Move the two boxes into the final installation location and unpack. Be sure not to discard any hardware!!
3. Rotate and lay the sofa onto its back. Make certain the surface is clean and free of any debris or liquids to prevent damage when laying the unit onto its back. See Figure B.  
**NOTE:** 4 Legs are required to be installed prior to installing the under surface mount electrical unit.
4. Determine the desired location where the undersurface mount electrical unit is to be installed. If located on the front of the unit go to step #5. If located on the right or left side with an arm option, go to step #8. If located on right or left side for an armless sofa model, go to step #11.
5. **FRONT LOCATION:** Locate the under surface mount electrical unit along any position between the left and right front legs. See Figure C. The electrical face plate front surface is to be located flush with the back surface of the front rail. See Figure D.
6. Mark the (4) hole locations on bottom surface of sofa. Bore (4) 1/8" pilot holes in bottom surface of sofa. Attach electrical unit with (4) #8 X 1" phillips drive screws. See Figure D.
7. Pull power cord tight to the backside of the sofa, secure the plastic "P" clip around the power cord. Slide/position the "P" clip 1 1/2" to 3" from the back surface of the sofa. Mark the hole location, pre-bore 1/8" pilot hole, and secure the "P" clip into place with (1) #8 X 1" phillips drive screw. See figure E.

Figure A

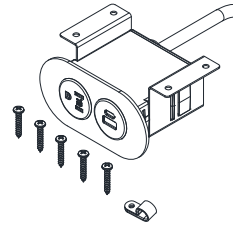


Figure B

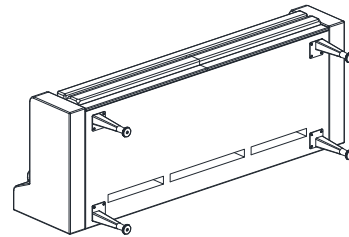


Figure C - (Front Location)

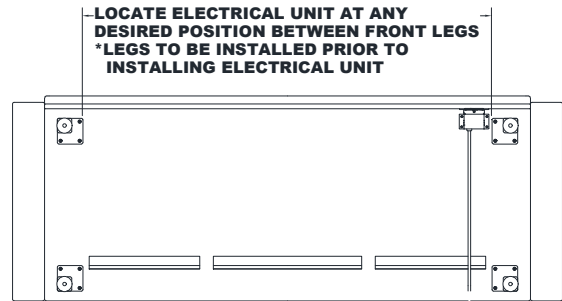


Figure D- (Front Location)

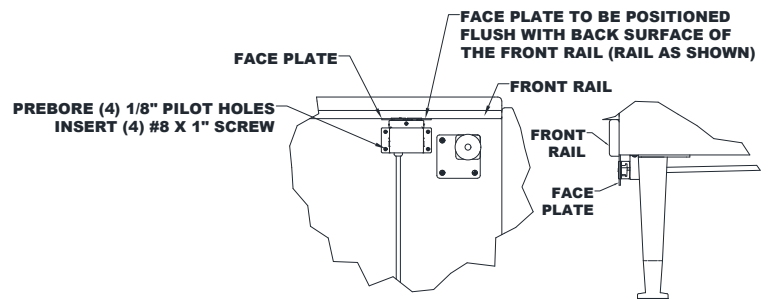
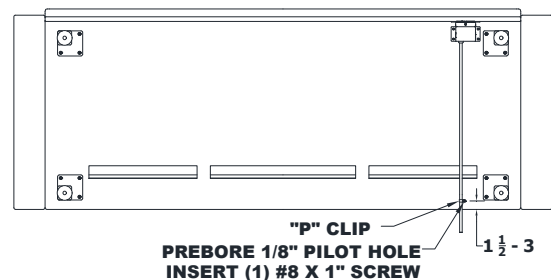


Figure E- (Front Location)



# SOMNA EC49 UNDER SURFACE MOUNT ELECTRICAL UNIT

## Installation (continued)

**Note:** Due to the product weight, it is recommended two or more people help with the installation of the EC49 electrical unit

8. **SIDE UNDER-ARM LOCATION:** Locate the under surface mount electrical unit centered on bottom surface of the desired left or right arm. The distance should be approximately 15 1/2" from back surface of the arm. See Figure F. The electrical face plate front surface is to be offset 1/8"-1/4" from the outside surface of the arm. See Figure F.
9. Mark the (4) hole locations on bottom surface of sofa arm. Bore (4) 1/8" pilot holes in bottom surface of sofa arm. Attach electrical unit with (4) #8 X 1" phillips drive screws. See Figure F.
10. Pull power cord tight to the backside of the sofa, secure the plastic "P" clip around the power cord. Slide/position the "P" clip 1 1/2" to 3" from the back surface of the sofa. Mark the hole location, pre-bore 1/8" pilot hole, and secure the "P" clip into place with (1) #8 X 1" Phillips drive screw. See figure G.
11. **SIDE ARMLESS LOCATION:** Locate the under surface mount electrical unit centered on bottom surface of the sofa on the desired right or left side. The distance should be approximately 15 1/2" from back surface of sofa. See Figure H. The electrical face plate front surface is to be located flush with the inside surface of the end panel. See Figure H.
12. Mark the (4) hole locations on bottom surface of sofa. Bore (4) 1/8" pilot holes in bottom surface of sofa. Attach electrical unit with (4) #8 X 1" phillips drive screws. See Figure H.
13. Pull power cord tight to the backside of the sofa, secure the plastic "P" clip around the power cord, secure the plastic "P" clip around the power cord. Slide/position the "P" clip 1 1/2" to 3" from the back surface of the sofa. Mark the hole location, pre-bore 1/8" pilot hole, and secure the "P" clip into place with (1) #8 X 1" Phillips drive screw. See figure I.
14. Turn the sofa right side up and make the power connection to building's electric service. The assembly is complete.

**NOTE:** All hardware provided must be installed as specified for compliance with the product warranty.

Figure F - (Side, Under Arm Location)

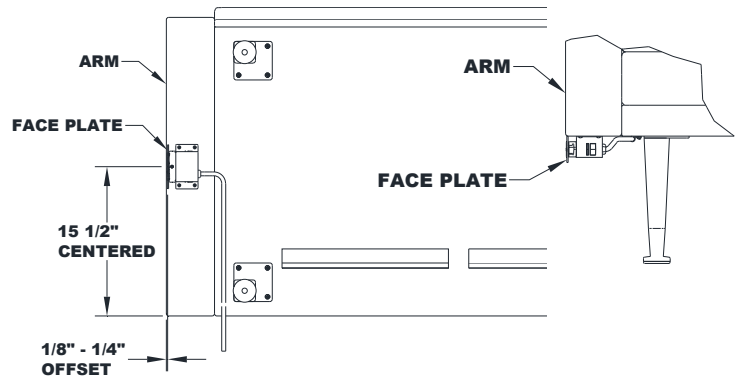


Figure G - (Side, Under Arm Location)

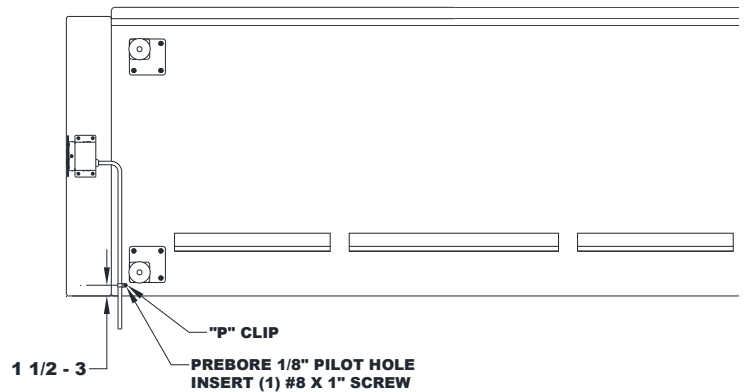


Figure H - (Side, Armless Location)

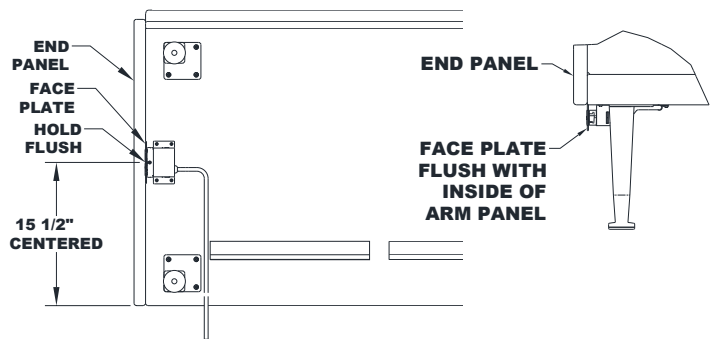


Figure I - (Side, Armless Location)

