

## Caprone



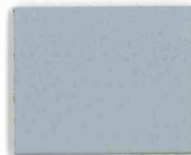
CPN092 Picholine



CPN030 Holly



CPN032 Blueberry



CPN090 It's a Boy



CPN027 Cloud



CPN087 Sublime



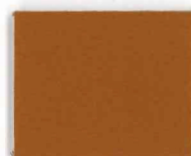
CPN089 Laguna



CPN088 Tiffany



CPN111 Bright White



CPN007 Maple



CPN082 Stucco



CPN073 Koala



CPN004 Acorn



CPN034 Cocoa



CPN044 Heron



CPN010 Glove



CPN012 Gunmetal



CPN037 Seal



CPN016 Plum



CPN071 Persimmon



CPN039 Ebony

## Old English



COA7949 Camel



COA1263 Brown



COA3144 Walnut



COA1572  
Medium Blue



COA1649 Navy



COA1520  
Blackberry



COA1500 Rouge



COA9887 Grey



COA0096 Black

## Caprone

Caprone is a superbly priced Italian leather with a soft hand and a classic grain, prized for its durability and versatility. Made on quality European hides, this practical upholstery leather features large clean cutting areas. Caprone is soft and yielding to the touch, yet is highly resistant to stains, wear and color fading due to its strong protective topcoat. IMO certified, Caprone is especially well suited for high traffic areas and public spaces.

## Old English

Old English is a beautiful hand-antiqued leather combining traditional craftsmanship with modern leather tanning and finishing technology. The two-tone coloring is applied completely by hand in a U.S. facility. The surface is then enhanced with a polished sheen, which accents the intricate blending of the color treatments and protects the leather against wear and spills, making Old English a good choice for any application.

Pattern	Origin	Leather Type	Thickness	Hide Size	Abrasion	Light Fastness	Wet Crocking	Flame Resistance
Caprone	Europe	Pigmented	1.0-1.2 mm	50-55 sq.ft.	ASTM D7255 (1000gram/1000 cycles)	ISO 105-B02: Blue wool Scale ≥ 5	ASTM D5053: Class 5	NFPA 260: Class 1; CAL TB117-2013; IMO 2010 FTP Part 8 (A.652(16))
Old English	USA	Pigmented	1.0-1.2 mm	48-52 sq.ft.	ASTM D7255 (1000 gram/1000 cycles)	ISO 105-B02: Blue wool Scale ≥ 5	ASTM D5053: Class 5	NFPA 260: Class 1; CAL TB117-2013; Boston Fire Code; NY/NJ Port Authority; IMO 2010 FTP Part 8 (A.652(16))

## Care & Cleaning Recommendations

Pigmented leathers are resistance to wear, scratching and staining so they require very little maintenance to maintain their beauty over time. General upkeep requires only an occasional dusting with a clean cloth. Periodically, you may wish to gently wipe the leather with a clean, damp cloth to remove accumulated soil and allow it to air dry. Leather conditioners and protectants, such as those by Leather Master® can be used as directed. Should a spill occur, blot (pressing gently without rubbing) immediately using clean, dry sections of an absorbent cloth or paper towel. Should soiling remain or for a more thorough cleaning, Cortina Leathers Universal Cleaner High-Tech Wipes® or a solution of lukewarm water and a mild cleaner, such as Ivory® soap or Woolite®, may be used. Dampen a clean white cloth and gently wipe the affected area using a circular motion. Rinse completely with clean sections of cloth which is damp with plain water until all cleaner is removed. Blot dry with paper towels or dry cloth and allow to completely air dry. Repeat the cleaning process as needed, allowing the leather to dry between applications. While it is possible to remove many deep stains and soiling from pigmented leathers, it may not be possible to remove all stains from this natural product.



225 Clay Street  
Jasper, IN 47546

800.457.4511 Toll Free  
812.482.3204 Office

JSIFURNITURE.COM

Issued in 2022

Please notice patterns, pricing, information and availability are subject to change. Contact JSI for verification if issue date is beyond three years.

JSI.CR.CPO.1122.1500



cortinaleathers.com

New York, New York | Conneaut, Ohio

To order samples please email: JSI@cortinaleathers.com