



M O M E N T U M



## Crypton Woven Performance 2

IN PARTNERSHIP WITH JSI

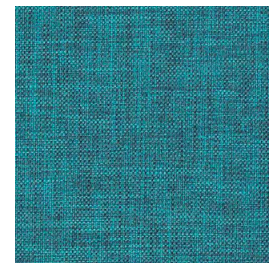


#lovewhatyoudo





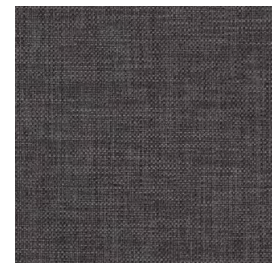
Cover Cloth - Platinum



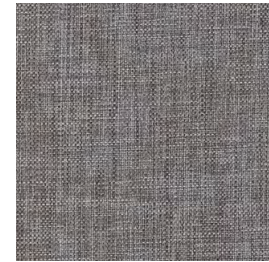
Cyan



Bouquet



Graphite



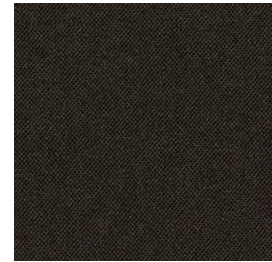
Vesper



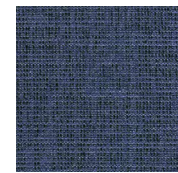
Delft



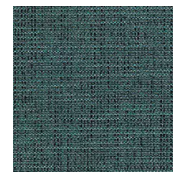
Indigo



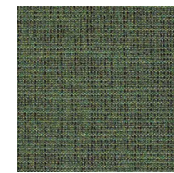
Jet



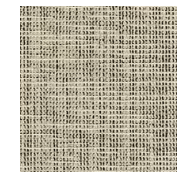
Hobnob - Depth



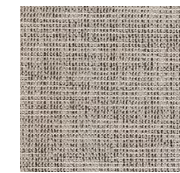
Teal



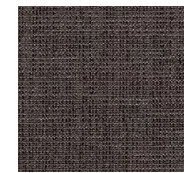
Forest



Zebra



Ash



Carbon



Hum - Golden



Cane



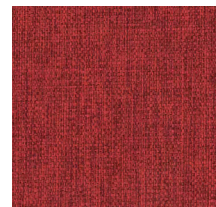
Mica



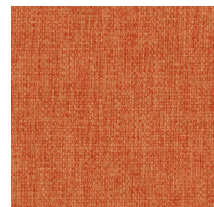
Spearmint



Granite



Carmine



Flame



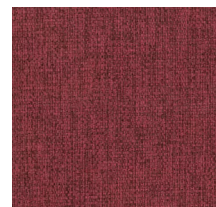
Pool



Stream



Flint



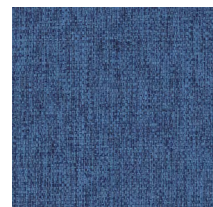
Berry



Sienna



Ivy



Ultramarine



Graphite



Plum



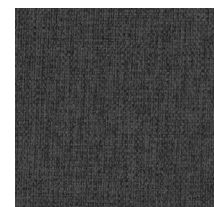
Mink



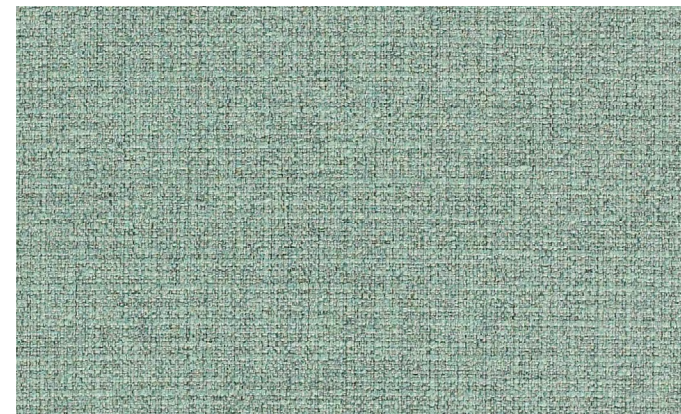
Glacier



Indigo



Carbon



Flock - Surf



Twine



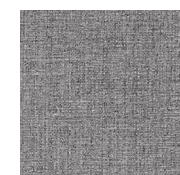
Flannel



Dusk



Flint



Nickel



Baltic



Smart Soft - Bisque



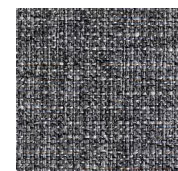
Shale



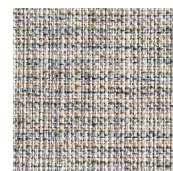
Bali



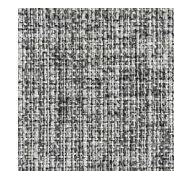
Ink



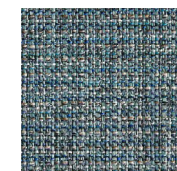
Caravan - Shadow



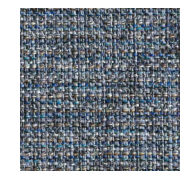
Shore



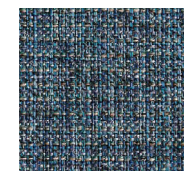
Granite



Cove



Bluestar



Zircon



# CRYPTON BENEFITS

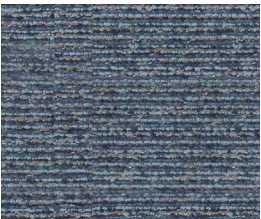
- Crypton® is the industry’s leading sustainable high performance finish
- GREENGUARD gold certified
- Reduced environmental impact
- Stain resistant with an impenetrable moisture barrier
- Cleans easily with mild soap and water or any of one of extensive list of approved cleaners, including bleach
- Sustainable: made with at least 50% recycled polyester



Promise - Moss



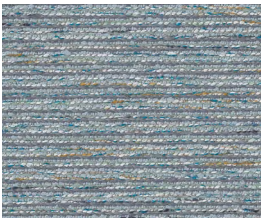
Ember



Atlantic



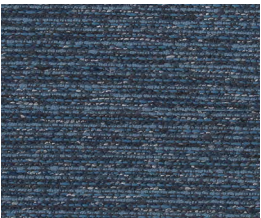
Stucco



Surf



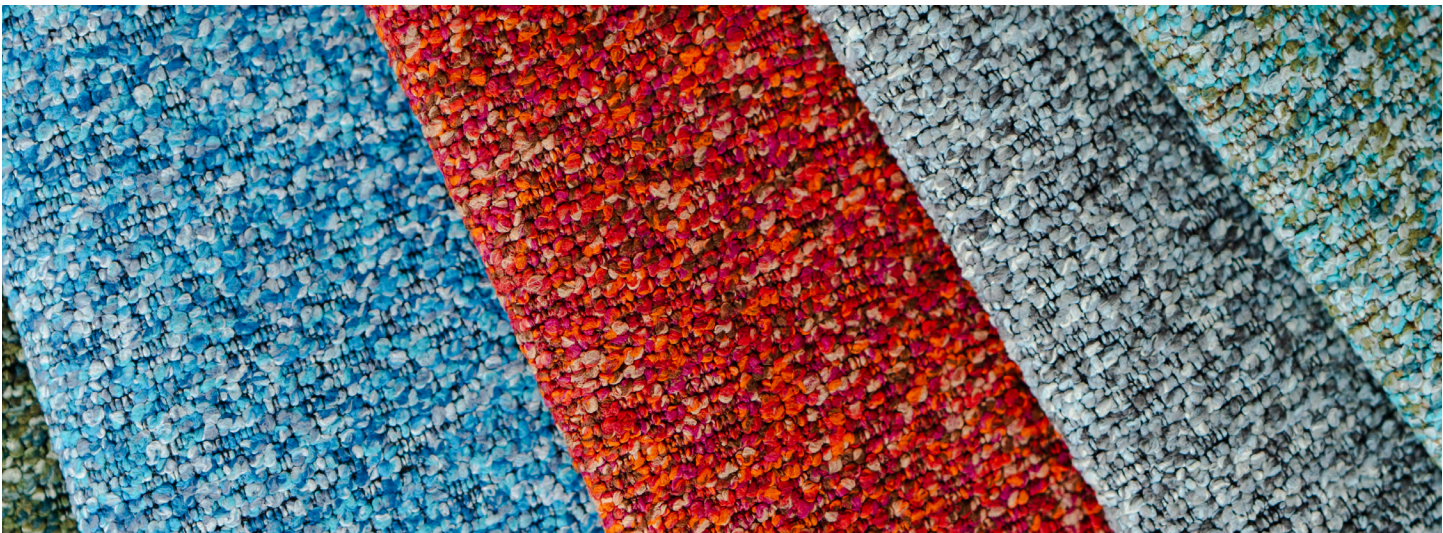
Loden



Lapis



Shale



Faux Felt - Pebble



Pool



Sprout



Graphite



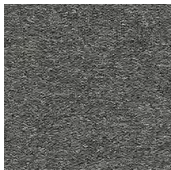
Stone



Lagoon



Coral



Flannel



Charcoal



Faux Mo - Pine



Sienna



Sapphire



Delta



Shale



Rust



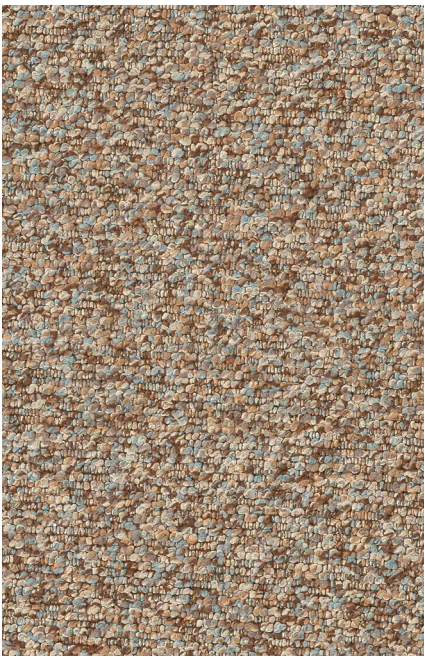
Marine



Shadow



Charcoal



Colorloop - Maple



Mineral



Alpine



Icicle



Fog



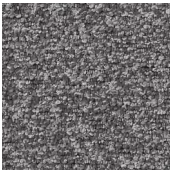
Hatchet



Moss



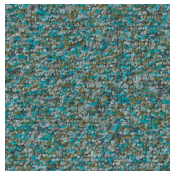
Azure



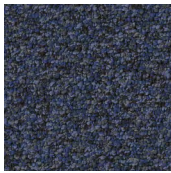
Smoke



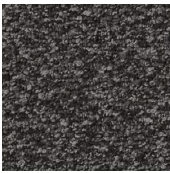
Ember



Aquatic



Cosmos



Pepper



# Crypton Woven Performance 2

IN PARTNERSHIP WITH JSI



All Momentum fabrics are made with recycled or natural fibers. All products are GREENGUARD certified.











— To order memos for project use, visit [momentumtextilesandwalls.com](https://momentumtextilesandwalls.com) or contact Momentum Textiles inside sales at 800.366.6839 —

**MomentumTextilesandWalls.com**

Instagram LinkedIn Pinterest



# JSI CRYPTON® WOVEN PERFORMANCE 2

Pattern - width	Fiber content	Finish	Abrasion	Lightfastness	Approx. repeat	Cleaning code
Caravan - 57" 	100% Polyester	Crypton®	100,000 double rubs	Class 5 40 hours		WS BC (10:1)
Colorloop - 56" 	70% Polyester, 30% Recycled Polyester	Crypton®	220,000 double rubs	Class 4.5 40 hours		WS BC (10:1)
Cover Cloth - 59" 	56% Repreve® Post Consumer Recycled Polyester, 44% Polyester	Crypton Green®	200,000 double rubs	Class 4 40 hours		W BC (10:1)
Faux Felt - 56" 	62% Repreve® Post Consumer Recycled Polyester, 38% Polyester	Crypton Green®	75,000 double rubs	Class 4.5 40 hours		WS BC (10:1)
Faux Mo - 55" 	58% Repreve® Post Consumer Recycled Polyester, 42% Polyester	Crypton Green®	200,000 double rubs	Class 4 40 hours		WS BC (10:1)
Flock - 56" 	53% Recycled Polyester, 47% Polyester	Crypton Green®	140,000 double rubs	Class 4.5 40 hours		W BC (10:1)
Hobnob - 56" 	51% Recycled Polyester, 49% Polyester	Crypton Green®	87,000 double rubs	Class 5 40 hours		W BC (10:1)
Hum - 55" 	60% Post Consumer Recycled Polyester, 40% Polyester	Crypton®	200,000 double rubs	Class 5 40 hours		WS BC (10:1)
Promise - 54" 	100% Post Consumer Recycled Polyester	Crypton®	200,000 double rubs	Class 5 40 hours		WS
Smart Soft - 56" 	50% Polyester, 50% Recycled Polyester	Crypton®	100,000 double rubs	Class 4 40 hours		WS BC (10:1)

\* ACT® Registered Certification Marks

These fabrics when used with proper components are compatible with California Technical Bulletin 133

Multiple factors affect fabric durability and appearance retention, including end-user application and proper maintenance

Abrasion test results exceeding ACT Performance Guidelines are not an indicator of product lifespan

Cleaning Code Definition

- W: Water-based foam or cleaner
- WS: Clean with water-based cleaning agents or foam
- BC: Bleach Cleanable



Search for fabrics by  
approved cleaners



GREENGUARD certified.  
CA Section 01350 compliant  
Eligible for CHPS Low-Emitting  
Material Credits




Find hundreds of pre-approved,  
in grade and in stock fabrics  
in 5 simple steps


Visit [momentumtextilesandwalls.com](https://momentumtextilesandwalls.com) to view full pattern repeat and complete specs

©2025

*love what you do*

JSI is quality furniture for work and life.

 225 CLAY STREET  
JASPER, INDIANA 47546

 800.457.4511 TOLL FREE  
812.482.3204 OFFICE

 [JSIFURNITURE.COM](https://jsifurniture.com)