

F O U N D A T I O N  
*everyday solutions*

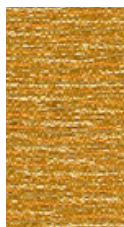


MOMENTUM  
TEXTILES & WALLCOVERING

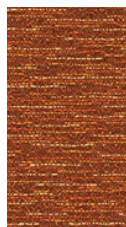




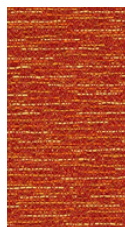
FUSE PRISTINE



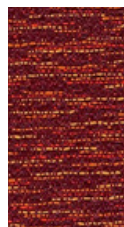
SAFFRON



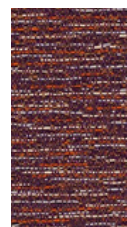
GINGER



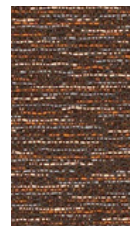
PIMENTO



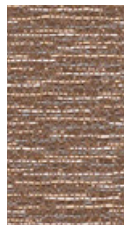
CARMINE



IRIS



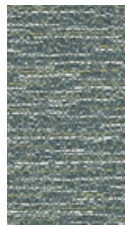
WALNUT



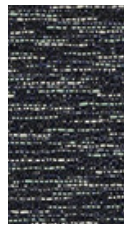
MALTED



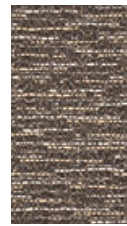
PRISTINE



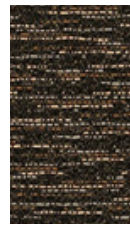
PRISTINE



AZUREAN



LUNAR



PEPPER



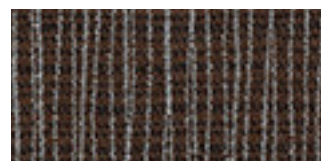
GRAPH CORK



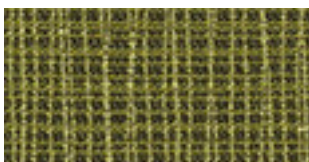
POPPY



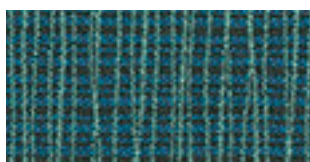
RUBY



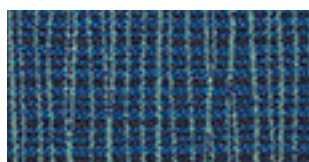
BARK



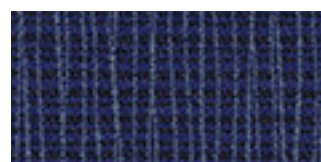
PARROT



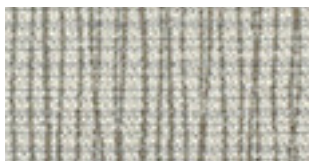
TIDAL



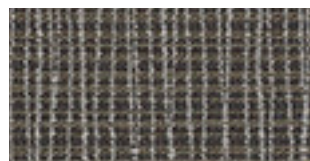
WAVE



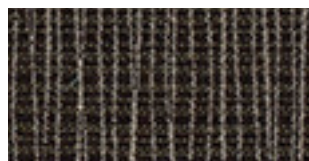
LAPIS



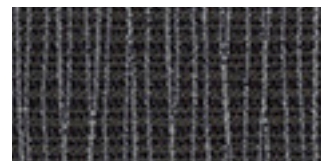
ALPINE



ALLOY



COAL



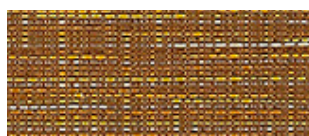
ANCHOR



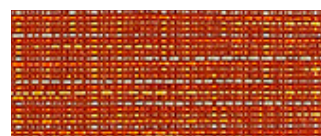
GUILD CELADON



EARTHEN



AMBER



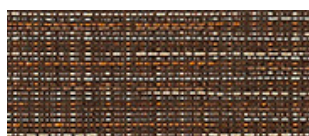
MANDARIN



DOVER



CYAN



ANISE



PLUM



LONDON



INK

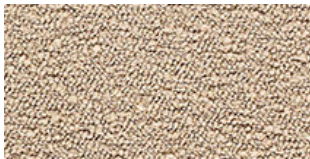


INDIGO

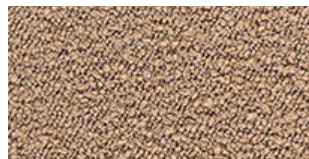


SHALE

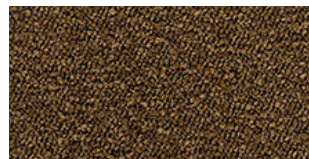




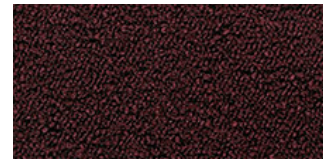
BOOM II MYSTIC



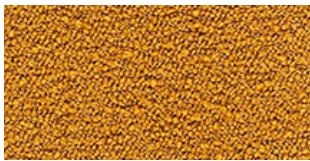
FROTHER



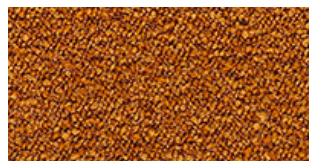
MUSHROOM



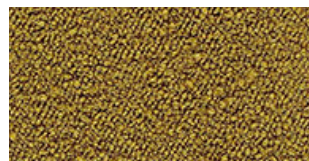
HEATHER



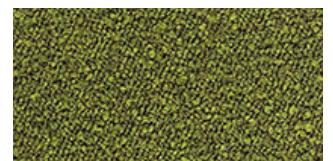
HONEYCOMB



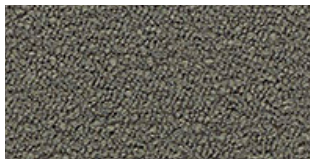
BUTTERSCOTCH



LIVING



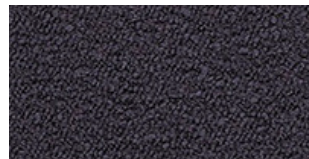
FOLIAGE



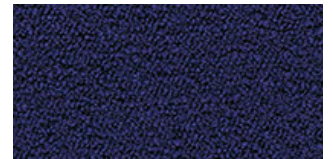
MIRROR



SPRUCE



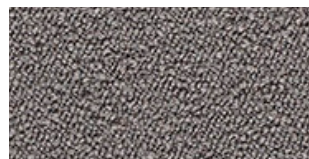
SAPPHIRE



KLEIN



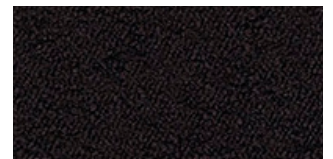
CLOUD



PEWTER



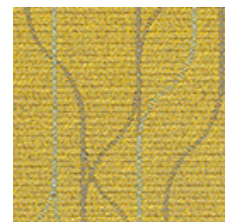
SLATE



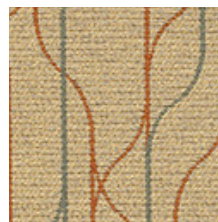
BLACK ICE



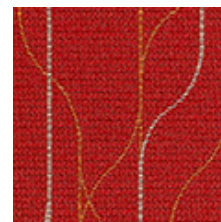
SWIM BISCAI



ANJOU



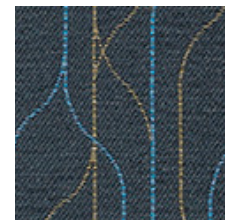
SANDSTONE



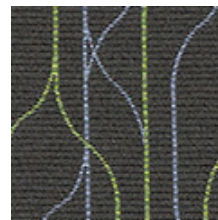
CRIMSON



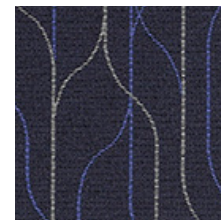
EARTHEN



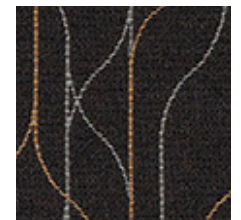
BALKEN



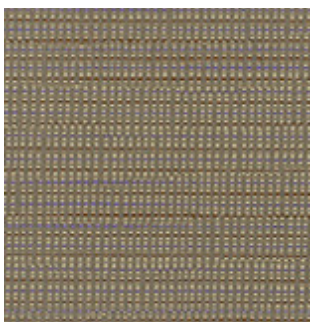
RIVERBANK



INK



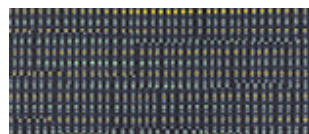
CALDERA



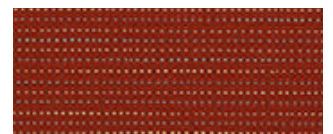
DART ASH



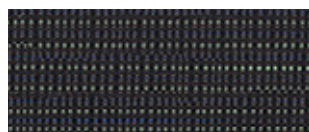
GEODE



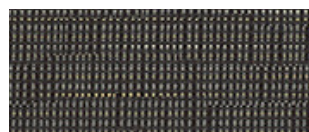
INK



CARMINE



CADET

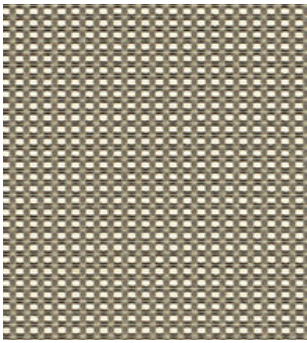


SLATE

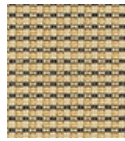


EBONY

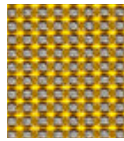




GRID CHROME



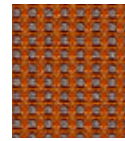
KHAKI



SUNBEAM



APPLE



EMBER



SCARLET



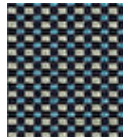
ORCHID



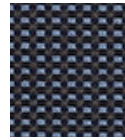
CHROME



GLACIER



SURF



INDIGO



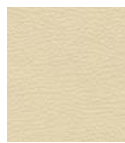
FLINT



JET



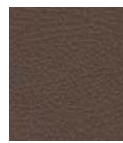
TANNER KNIGHT



NATURAL



LARK



COCOA



BONSAI



LAGOON



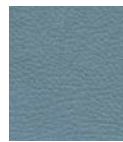
PASSION



NICKEL



DAWN



MYSTIC



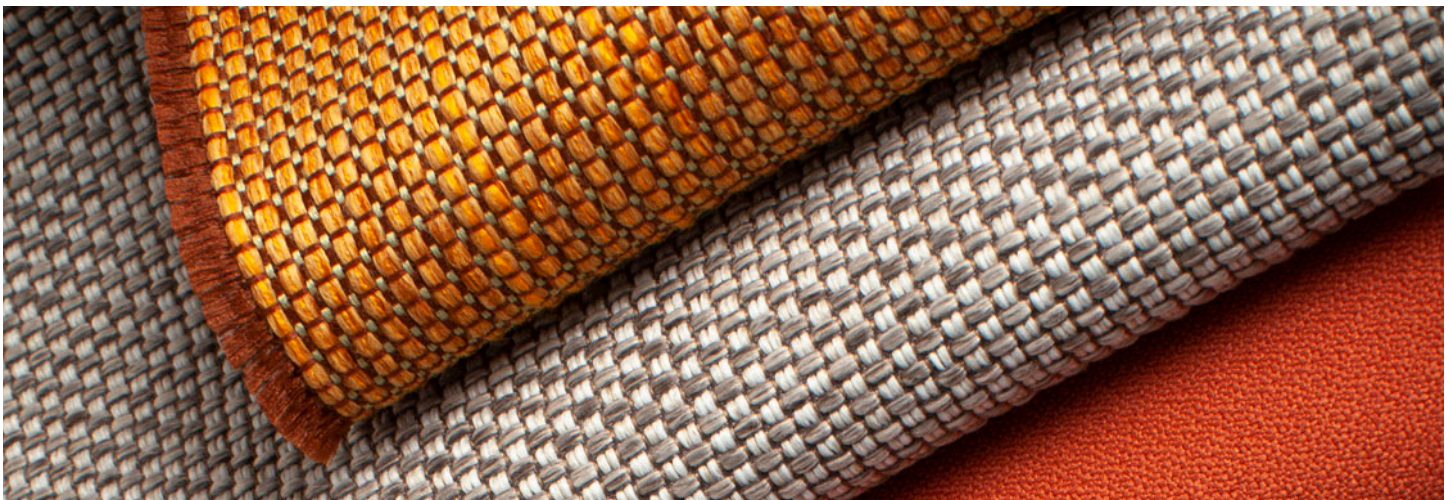
SAPPHIRE



BLAZER



BLACK



BETA PEARL



MALT



QUINCE



KOI



TWINE



BARK



MADDER



IVY



CINDER



AZURE



LAPIS



CADET



BASALT

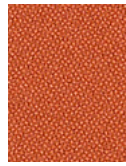




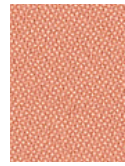
ORIGIN ALLOY



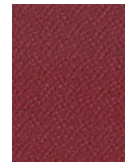
WHEAT



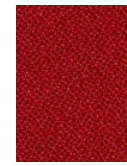
CLAY



BLUSH



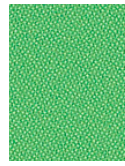
GARNET



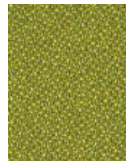
FEZ



MALT



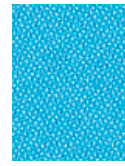
CLOVER



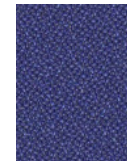
GAIA



VINCA



CYAN



EURO



SAPPHIRE



AVALON



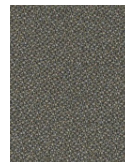
SEED



ARUNDEL



IRON



STATELY



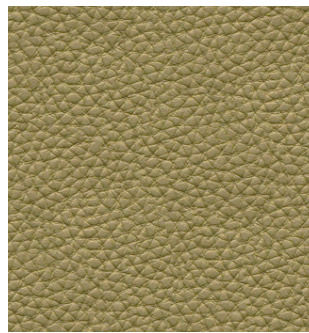
STEEL



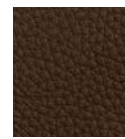
SHALE



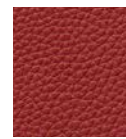
BASALT



BRAVO II ALFALFA



BARK



BARN



BLACK



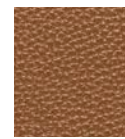
BRICK



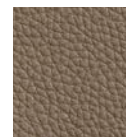
CINDER



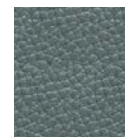
CLAY



COPPER



DRIFT-  
WOOD



DUSK



GRAYSTONE



HEMATITE



IRON



MARINA



MICA



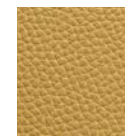
NIGHT



OUTBACK



PATINA



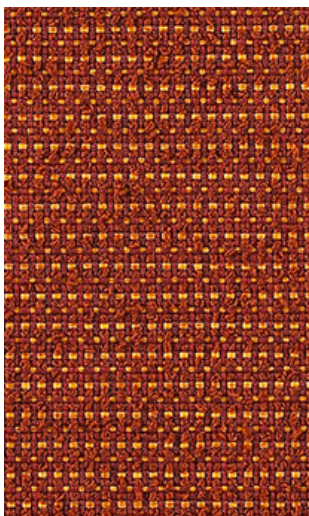
RANCH



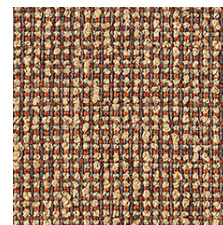
SADDLE



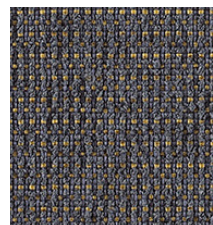
SLATE



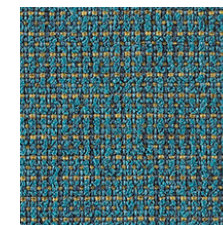
PIP AMBER



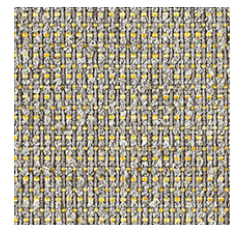
ANISE



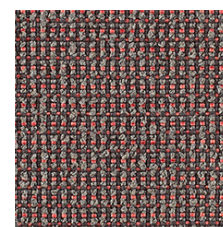
CALICO



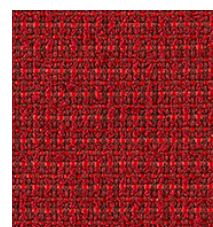
CALYPSO



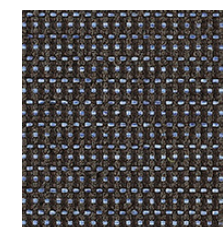
CHALICE



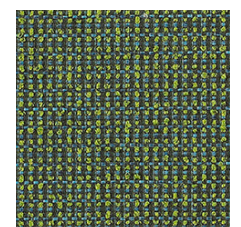
CHESHIRE



CRIMSON

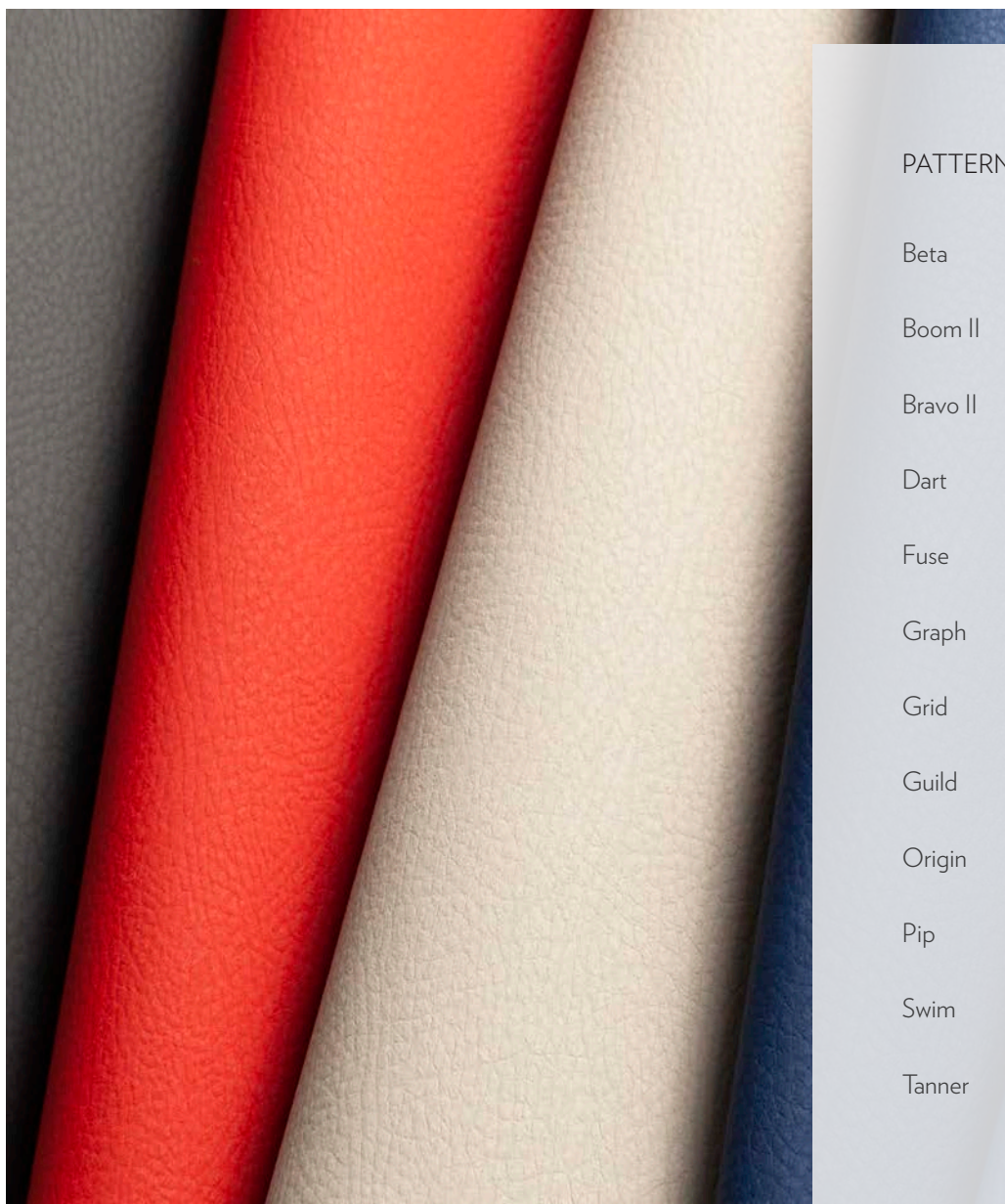


DUSK



MALACHITE





## PATTERN

## GRADE

Beta	D
Boom II	D
Bravo II	E
Dart	C
Fuse	A
Graph	B
Grid	B
Guild	A
Origin	A
Pip	D
Swim	D
Tanner	C















Search for Covid Cleaners

All Momentum fabrics are made with recycled or natural fibers. All products are GREENGUARD certified.

— To order memos for project use, visit [momentumtextilesandwalls.com](https://momentumtextilesandwalls.com) or contact Momentum Textiles inside sales at 800-366-6839. —

# JSI FOUNDATION EVERYDAY SOLUTIONS

Pattern - width	Fiber content	Abrasion	Lightfastness	Approx. repeat	Cleaning code
Beta - 55" 	67% Repreve® Recycled Polyester, 33% Polyester Acrylic Backing	190,000 double rubs	Class 4 40 hours	1/4" V, 1/8" H	WS
Boom II - 58" 	71% Post Consumer Recycled Polyester, 29% Polyester Acrylic Backing	150,000 double rubs	Class 5 40 hours		WS
Bravo II - 54" 	100% Polyurethane / PVC Free Polyester Backing	500,000 double rubs	Class 4.5 200 hours		W BC (4:1)
Dart - 56" 	89% Repreve® Post Consumer Recycled Polyester, 11% Polyester Acrylic Backing	102,000 double rubs	Class 5 40 hours	9-5/8" V, 4-7/8" H	W
Fuse - 54" 	65% Post Industrial Recycled Polyester, 35% Post Consumer Recycled Polyester Latex Backing	100,000 double rubs	Class 4.5 40 hours		WS
Graph - 56" 	75% Repreve® Post Consumer Recycled Polyester, 25% Polyester Acrylic Backing	170,000 double rubs	Class 5 40 hours	3-3/8" V, 7-1/2" H	W
Grid - 54" 	64% Repreve® Post Consumer Recycled Polyester, 36% Polyester Acrylic Backing	160,000 double rubs	Class 4 40 hours	1/8" V, 1/8" H	WS
Guild - 54" 	71% Post Consumer Recycled Polyester, 29% Polyester Latex Backing	90,000 double rubs	Class 4.5 40 hours		WS
Origin - 58" 	100% Post Consumer Recycled Polyester Acrylic Backing	282,000 double rubs	Class 4 40 hours		WS
Pip - 55" 	53% Repreve® Recycled Polyester, 47% Polyester Acrylic Backing	200,000 double rubs	Class 4.5 40 hours	1/4" V, 1/8" H	WS
Swim - 54" 	65% Recycled Polyester, 35% Polyester Acrylic Backing	50,000 double rubs	Class 4.5 40 hours	6-3/4" V, 7-1/2" H	WS
Tanner - 54" 	100% Polyurethane / PVC Free Polyester Backing	1,000,000 double rubs	Class 4.5 200 hours		W BC (5:1)

\* ACT® Registered Certification Marks

These fabrics when used with proper components are compatible with California Technical Bulletin 133

Multiple factors affect fabric durability and appearance retention, including end-user application and proper maintenance

Abrasion test results exceeding ACT Performance Guidelines are not an indicator of product lifespan

Cleaning Code Definition

- W: Water-based foam or cleaner
- WS: Clean with water-based cleaning agents or foam
- BC: Bleach Cleanable



Search for fabrics by  
approved cleaners



GREENGUARD certified.  
CA Section 01350 compliant  
Eligible for CHPS Low-Emitting  
Material Credits



Find hundreds of pre-approved,  
in grade and in stock fabrics  
in 5 simple steps

*love what you do*

JSI is quality furniture for work and life.

 225 CLAY STREET  
JASPER, INDIANA 47546

 800.457.4511 TOLL FREE  
812.482.3204 OFFICE

 JSIFURNITURE.COM

Visit [momentumtextilesandwalls.com](https://momentumtextilesandwalls.com) to view full pattern repeat and complete specs

©2023

J.MT.EVDY.0223.1500