



MOMENTUM



Foundation Everyday Solutions 2

IN PARTNERSHIP WITH JSI



#lovewhatyoudo

CLEAN VINYL BENEFITS

- 100% Clean Vinyl
- Phthalate free
- Prop 65 compliant
- HPD
- GREENGUARD gold certified
- Low-VOC CA Section 01350
- 100,000 - 1 million double rubs
- Extensive list of approved cleaners - including COVID approved cleaners



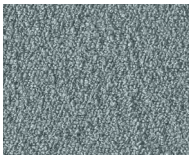
Boom II - Cloud



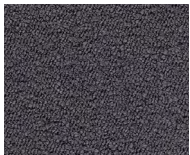
Mystic



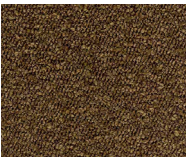
Mirror



Jade



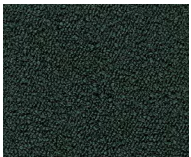
Slate



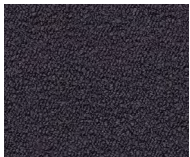
Mushroom



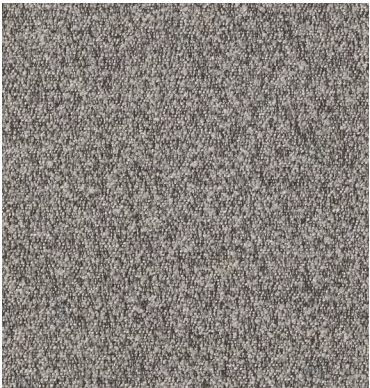
Wallstreet



Spruce



Sapphire



Curl - Cloud



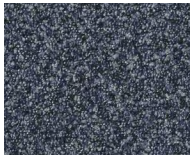
Pebble



Steel



Mist



Ink



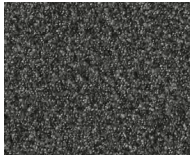
Moss



Pine



Tidal



Charcoal



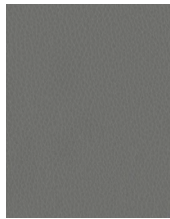
Carson CV - Stone



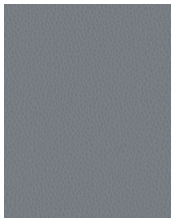
Bluff



Sterling



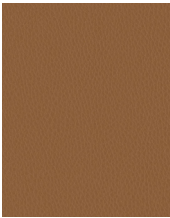
Fog



Airy



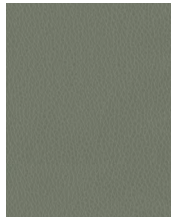
Indigo



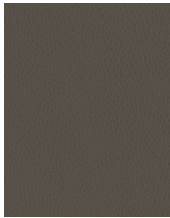
Buck



Azure



Sage



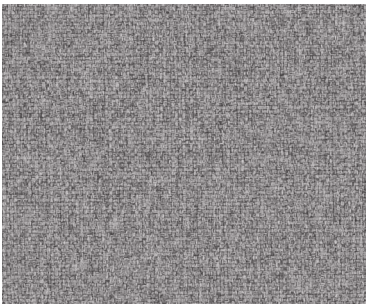
Roast



Graphite



Shadow



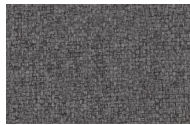
Ego - Foil



Spa



Dove



Galena



Twig



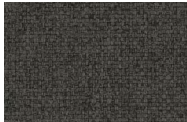
Jade



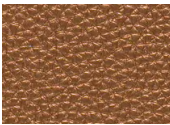
Ginger



Midnight



Onyx



Bravo II - Copper



Tumbleweed



Hematite



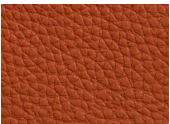
Graystone



Night



Iron



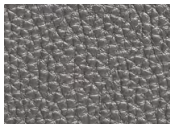
Clay



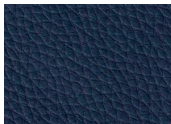
Saddle



Willow



Cinder



Marina



Black

E P U B E N E F I T S

- PVC free
- Produced using no water and 56% less energy
- Zero waste chemicals and zero solvents in production
- GREENGUARD gold certified
- Over 900,000 double rubs
- Superior hydrolysis resistance at 15 weeks
- Extensive list of approved cleaners - including COVID approved cleaners

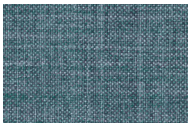




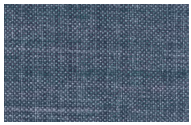
Top Talent - Limestone



Sediment



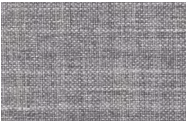
Fin



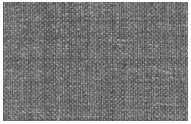
Atlantic



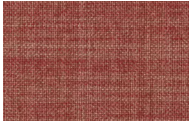
Ink



Stratus



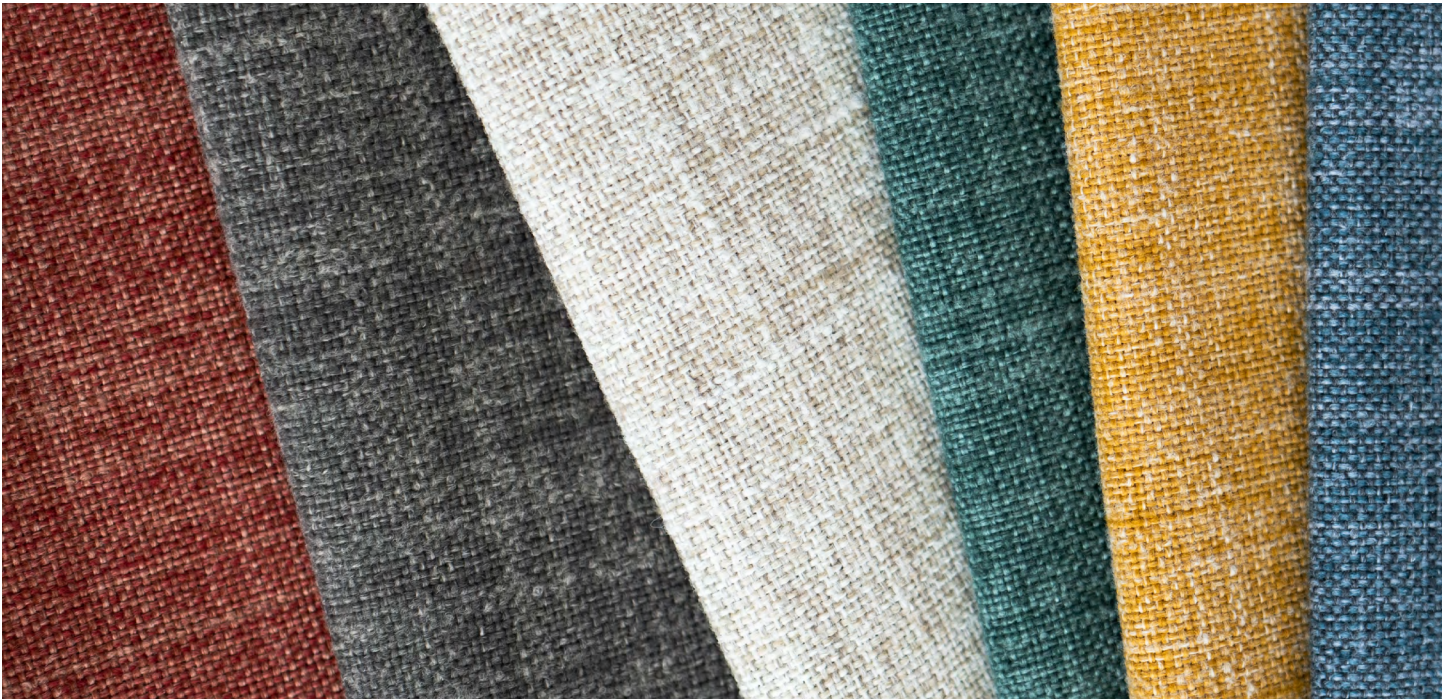
Mercury



Rosewood



Night



Starfall - Smoke



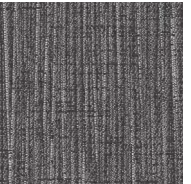
Arctic



Wheat



Juniper



Shadow



Steel



Pepper



Indigo



Jet



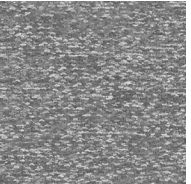
Nestle - Mineral



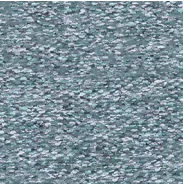
Almond



Mink



Nickel



Cascade



Grove



Mesa



Pepper



Eve



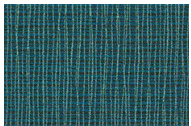
Graph - Chalice



Alpine



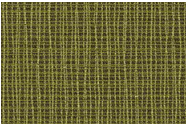
Alloy



Tidal



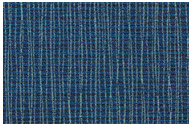
Anchor



Parrot



Ruby



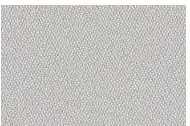
Wave



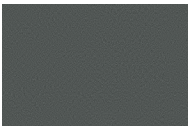
Coal



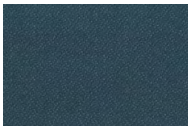
Origin - Arundel



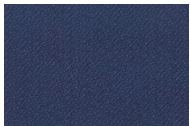
Alloy



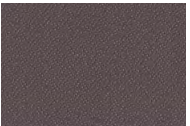
Stately



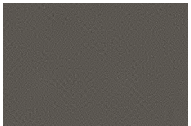
Indigo



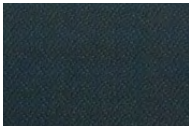
Sapphire



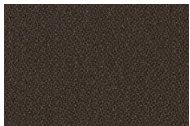
Steel



Manta



Jet



Basalt

Foundation Everyday Solutions 2

IN PARTNERSHIP WITH JSI



All Momentum fabrics are made with recycled or natural fibers. All products are GREENGUARD certified.
















— To order memos for project use, visit momentumtextilesandwalls.com or contact Momentum Textiles inside sales at 800.366.6839 —

MomentumTextilesandWalls.com

Instagram LinkedIn Pinterest



JSI FOUNDATION EVERYDAY SOLUTIONS 2

Pattern - width	Fiber content	Finish	Abrasion	Lightfastness	Approx. repeat	Cleaning code
Beta - 55" 	67% Repreve® Recycled Polyester, 33% Polyester Acrylic Backing		190,000 double rubs	Class 4 40 hours	1/4" V, 1/8" H	WS
Boom II - 58" 	74% Recycled Polyester, 26% Polyester Acrylic Backing		150,000 double rubs	Class 5 40 hours		WS
Bravo II - 54" 	100% Polyurethane / PVC Free Polyester Backing		500,000 double rubs	Class 4.5 200 hours		W BC (4:1)
Carson CV - 54" 	100% Clean Vinyl/Phthalate Free Polyester Backing	Protective Overcoat	500,000 double rubs	Class 4.5 200 hours		W BC (10:1)
Cordovan EPU - 54" 	100% EPU Polyurethane Polyester Backing		185,000 double rubs	Class 4.5 200 hours		WS BC (4:1)
Curl - 55" 	100% Post Consumer Recycled Polyester		300,000 double rubs	Class 5 40 hours		WS
Ego - 54" 	85% Polyester, 15% Viscose Rayon Acrylic Backing		250,000 double rubs	Class 4 40 hours		WS
Fuse - 54" 	65% Post Industrial Recycled Polyester, 35% Post Consumer Recycled Polyester Latex Backing		100,000 double rubs	Class 4.5 40 hours		WS
Graph - 56" 	75% Repreve® Recycled Polyester, 25% Polyester Acrylic Backing		170,000 double rubs	Class 5 40 hours	3 3/8" V, 7 1/2" H	W
Guild - 54" 	71% Post Consumer Recycled Polyester, 29% Polyester Latex Backing		90,000 double rubs	Class 4.5 40 hours		WS
Nestle - 54" 	67% Polyester, 33% Post Consumer Recycled Polyester Acrylic Backing		200,000 double rubs	Class 5 40 hours		WS
Origin - 58" 	100% Post Consumer Recycled Polyester Acrylic Backing		282,000 double rubs	Class 4 40 hours		WS
Scatter - 54" 	78% Polyester, 22% Post Consumer Recycled Polyester Acrylic Backing		90,000 double rubs	Class 4.5 40 hours		WS
Starfall - 55" 	61% Post Consumer Recycled Polyester, 39% Polyester Acrylic Backing		100,000 double rubs	Class 4.5 40 hours	14 3/4" V, 14 3/4" H	WS
Top Talent - 54" 	100% Recycled Olefin Acrylic Backing		200,000 double rubs	Class 5 40 hours		WS BC (10:1)

* ACT® Registered Certification Marks

These fabrics when used with proper components are compatible with California Technical Bulletin 133

Multiple factors affect fabric durability and appearance retention, including end-user application and proper maintenance

Abrasion test results exceeding ACT Performance Guidelines are not an indicator of product lifespan

Cleaning Code Definition

- W: Water-based foam or cleaner
- WS: Clean with water-based cleaning agents or foam
- BC: Bleach Cleanable

COVID-19
APPROVED
CLEANERS

Search for fabrics by
approved cleaners




GREENGUARD certified.
CA Section 01350 compliant
Eligible for CHPS Low-Emitting
Material Credits


love what you do


JSI is quality furniture for work and life.



Find hundreds of pre-approved,
in grade and in stock fabrics
in 5 simple steps

 225 CLAY STREET
JASPER, INDIANA 47546

 800.457.4511 TOLL FREE
812.482.3204 OFFICE

 JSIFURNITURE.COM

Visit momentumtextilesandwalls.com to view full pattern repeat and complete specs

©2025

J.MT.EVDY.0825.1500