

sustainable + woven

REVIVAL



JSI and Kvadrat: A Partnership in Sustainability

JSI and Kvadrat have joined forces, united by a shared commitment to craftsmanship, durability, and sustainability. Together, we focus on achieving net-zero goals, recycling materials, minimizing waste and water use, and ensuring transparency and certification.

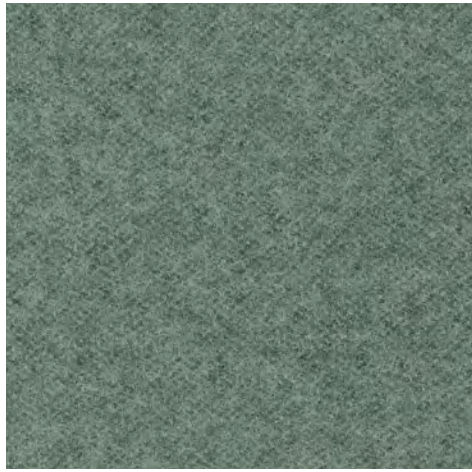
We believe that longevity is at the heart of sustainable design. Kvadrat textiles are crafted from high-quality raw materials to maximize durability while minimizing environmental impact. Most of our textiles are produced in our own weaving mills and this proximity to production, enables us to closely manage emissions, waste, and resource use.

Revival: *Sustainable and Woven* introduces a curated selection of five Kvadrat textiles, made from natural and recycled fibers, to complement the JSI collection. Our joint offer is designed to provide architects and designers with environmentally conscious product choices they can trust.

Our partnership at glance:

- Five Kvadrat textile collections
- 139 color SKUs
- Price Grades ranging from C through F
- All Kvadrat textiles are contract-grade, third-party certified and tested
- All Kvadrat textiles are Greenguard certified and come with a 10-year warranty

Discover more here



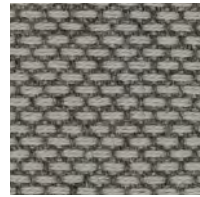
Hero Heather
933



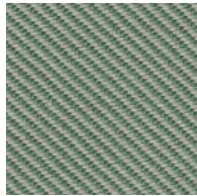
Steelcut Beat
105



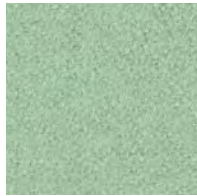
Hero 2
102



Re-wool 2
128



Reflect
924



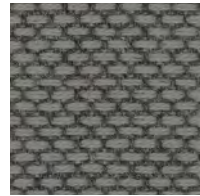
Hero 2
912



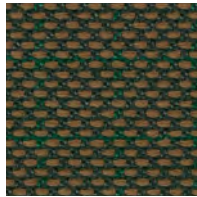
Hero 2
942



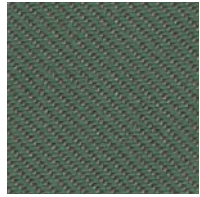
Reflect
114



Re-wool 2
158



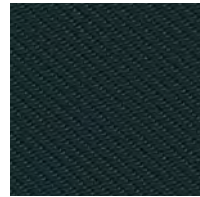
Steelcut Beat
965



Reflect
944



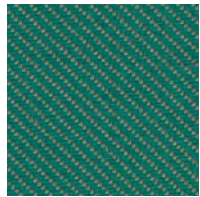
Hero 2
962



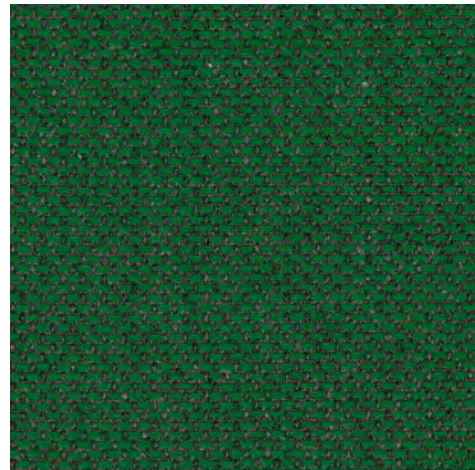
Reflect
994



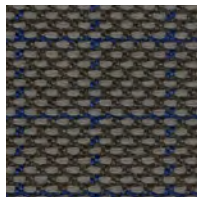
Re-wool 2
858



Reflect
964



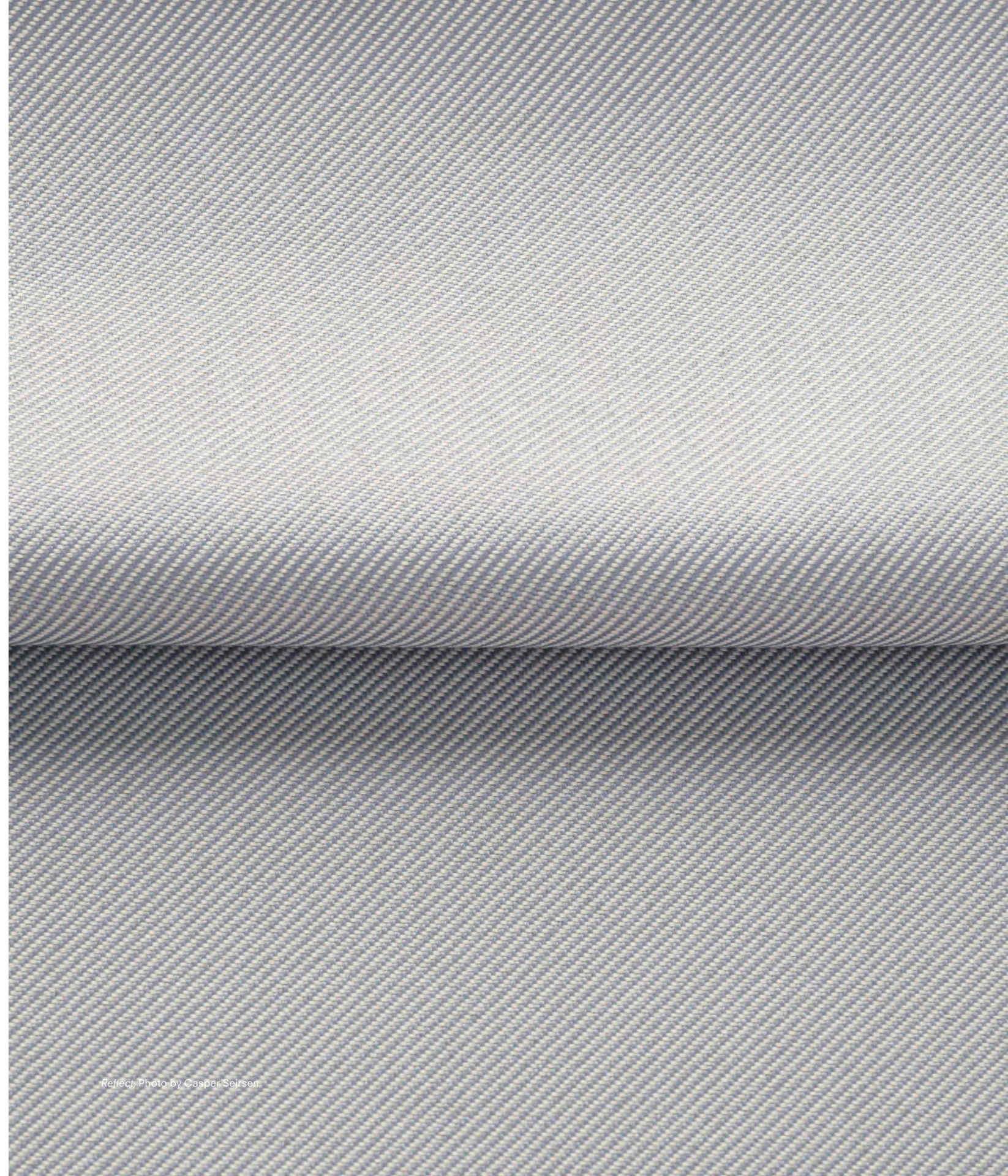
Re-wool 2
967



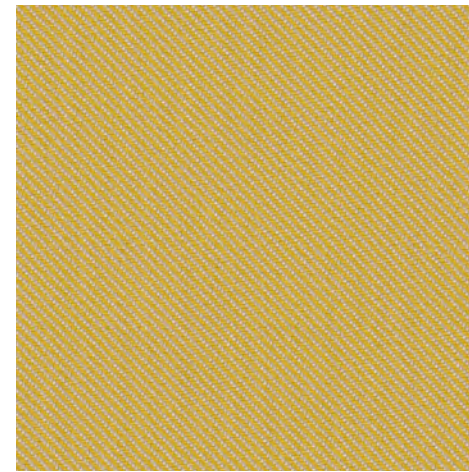
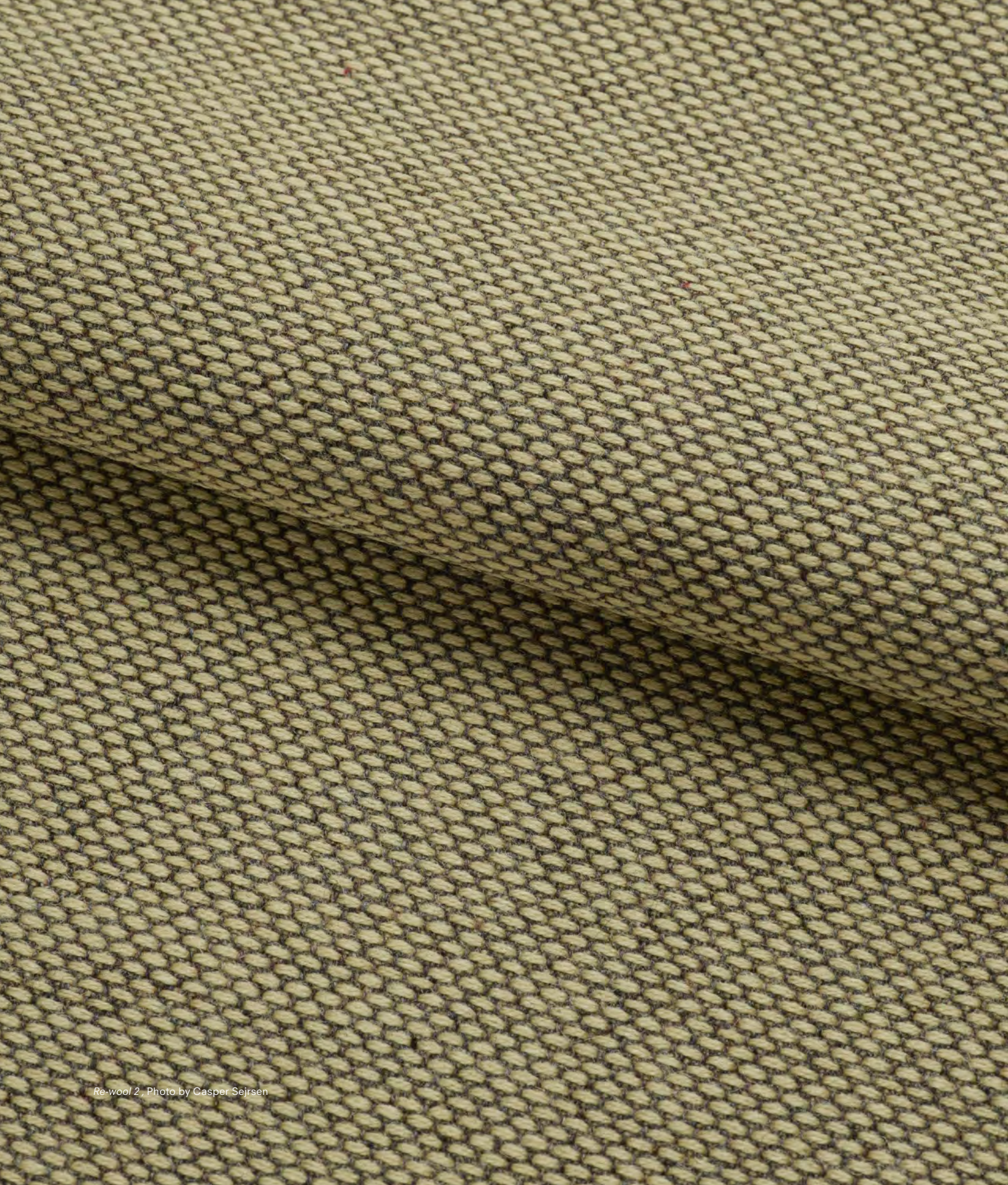
Steelcut Beat
175



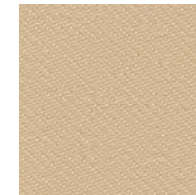
Re-wool 2
198



Reflect, Photo by Casper Sejersen



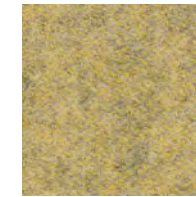
Reflect
434



Reflect
404



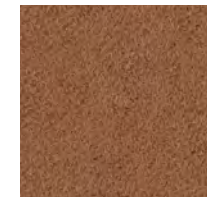
Re-wool 2
447



Hero Heather
423



Hero Heater
233



Hero 2
352



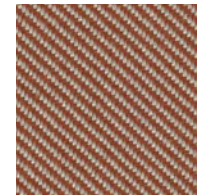
Re-wool 2
218



Hero 2
422



Steelcut Beat
355



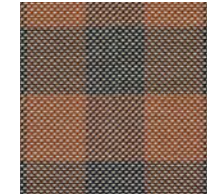
Reflect
444



Re-wool 2
347



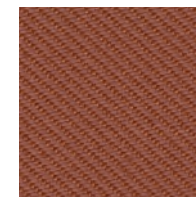
Re-wool 2
568



Steelcut Beat
345



Re-wool 2
558



Reflect
464



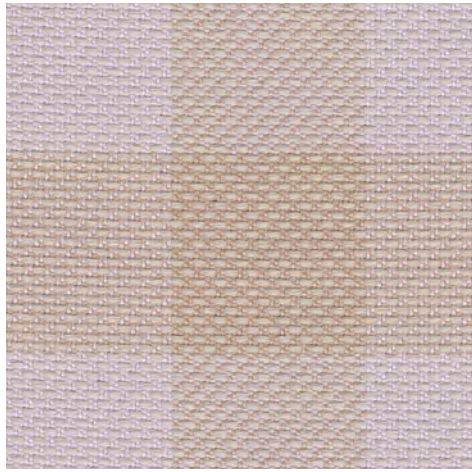
Hero Heather
373



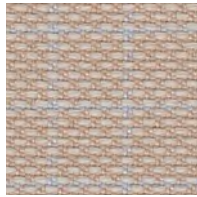
Re-wool 2
377



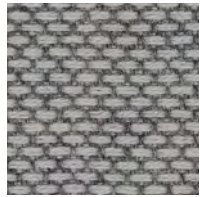
Hero 2
242



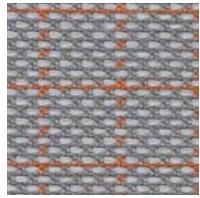
Steelcut Beat
215



Steelcut Beat
225



Re-wool 2
108



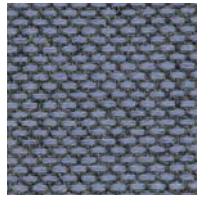
Steelcut Beat
135



Hero 2
162



Hero 2
732



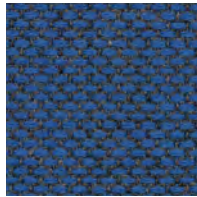
Re-wool 2
657



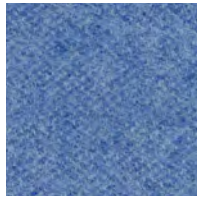
Reflect
714



Reflect
174



Re-wool 2
767



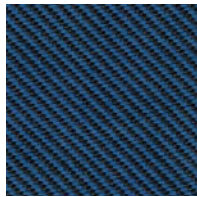
Hero Heather
733



Hero 2
622



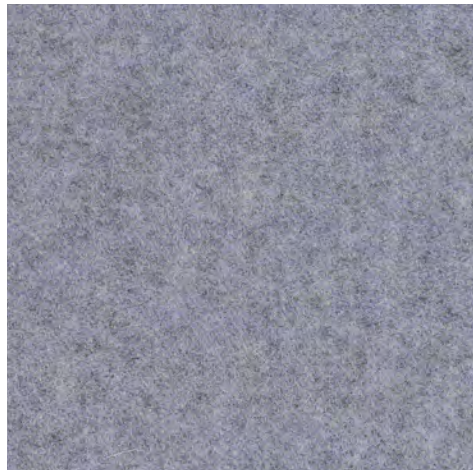
Steelcut Beat
655



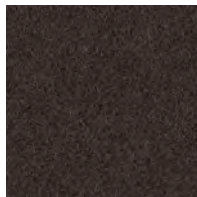
Reflect
884



Hero 2
672



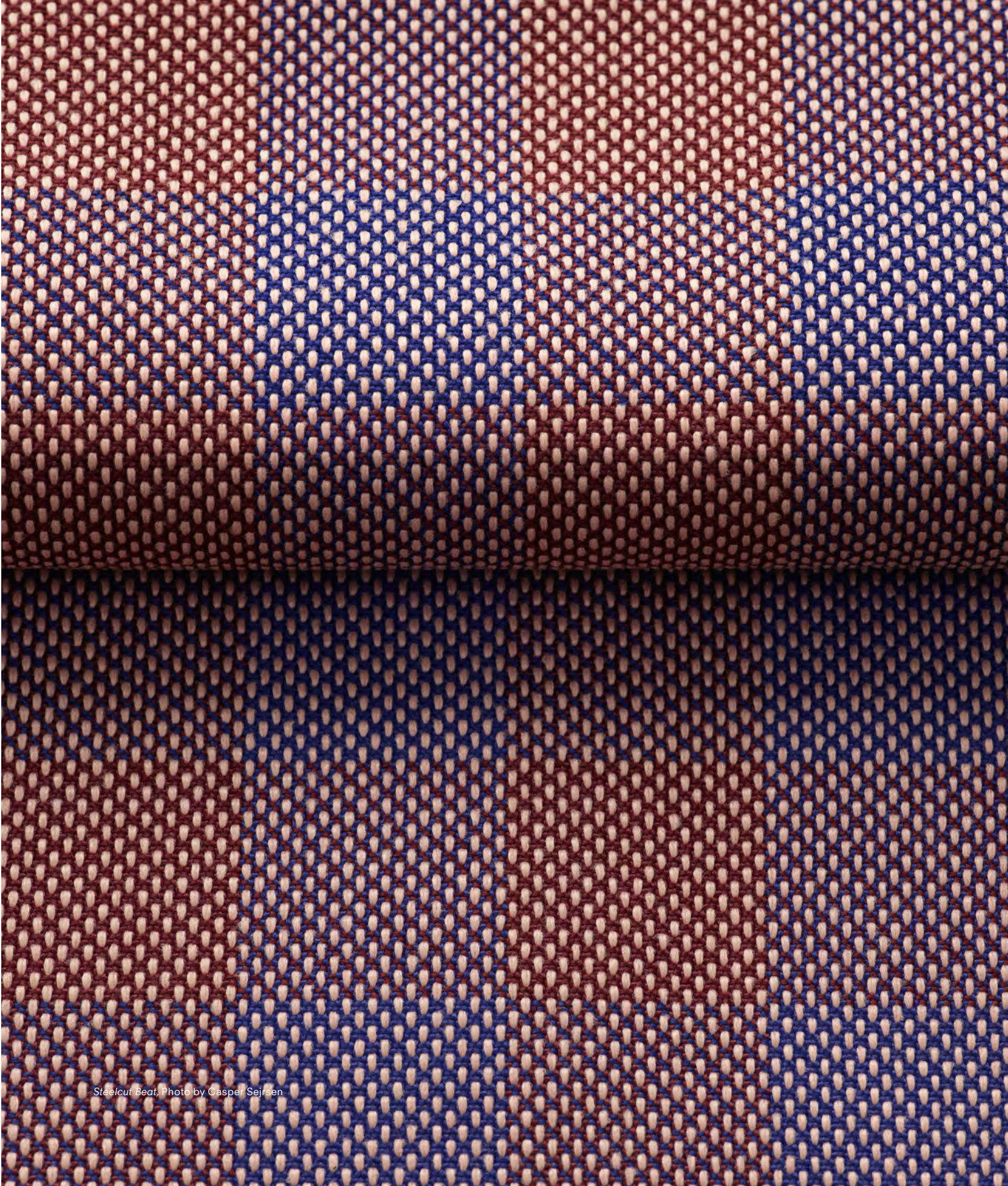
Hero Heather
713



Hero 2
392



Steelcut Beat
785



Steelcut Beat, Photo by Casper Sejrsen

Hero 2

Designed by Patricia Urquiola
97% new wool, 3% recycled nylon

Direction: ↔

Width: approx. 140cm (55")

Abrasion: 45,000 Martindale

Click here for full Technical Specifications.

Hero Heather

Designed by Patricia Urquiola
97% wool, 3% recycled nylon

Direction: ↓

Width: approx. 140cm (55")

Abrasion: 45,000 Martindale

Click here for full Technical Specifications.

Reflect

Designed by Patricia Urquiola
100% post-consumer recycled polyester

Direction: ↓

Width: approx. 140cm (55")

Abrasion: 100,000 Martindale

Click here for full Technical Specifications

Re-wool 2

Designed by Margrethe Odgaard
45% recycled wool, 45% new wool, worsted,
10% nylon

Direction: ↓

Width: approx. 140cm (55")

Abrasion: 100,000 Martindale

Click here for full Technical Specifications.

Steelcut Beat

Designed by Frans Dijkmeijer & Giulio Ridolfo
100% post-consumer recycled polyester

Direction: ↓

Width: approx. 140cm (55")

Abrasion: 100,000 Martindale

Click here for full Technical Specifications.

love what you do

JSI is quality furniture for work and life.

225 CLAY STREET
JASPER INDIANA 47546
T: 800.457.4511
JSIFURNITURE.COM

11/2024

kvadrat