

# Maglia™ & Modena™

## ecoSense® Collection

	Modena	Maglia
Content	100% Vinyl	100% Vinyl
Finish	PERMABLOK™ ADVANCED VINYL PROTECTION PLUS+	PERMABLOK® ADVANCED VINYL PROTECTION
Backing	Hi-Loft™ 100% Polyester	Hi-Loft™ 100% Polyester
EcoSense®	Yes	Yes
Weight	26 oz.	30 oz.
Width	54"	54"
Roll Size	30 yd.	30 yd.
Denim Dye Cleanable	Yes	No
Bleach Cleanable	10% Bleach/Water Solution	10% Bleach/Water Solution
Phthalates	No	No
Biocides	No	No
Flame Retardants	No	No
Abrasion CFFA-1a / ASTM D-4157 Wyzenbeek	100,000 Cycles, Wyzenbeek #10 Cotton Duck	100,000 Cycles, Wyzenbeek #10 Cotton Duck
CFFA-Healthcare-201	Pass	Pass
Cold Crack CFFA-6a	-10°F	-10°F
UV Stability	Xenotest: AATCC TM 16-3 / NTC 1479 / CFFA-2a - Blue Wool 1,000 Hours	Xenotest: AATCC TM 16-3 / NTC 1479 / CFFA-2a - Blue Wool 1,000 Hours
<b>Flame Retardancy*</b>		
California TB 117-2013	Pass	Pass
NFPA 260	Class I	Class I
UFAC	Class I	Class I
Dye Transfer	Certain clothing and accessory dyes (such as those used on denim jeans) may migrate to lighter colors. This phenomenon is increased by humidity and temperature and is irreversible. Please check compatibility when using this product in combination with painted or varnished surfaces.  Modena: Once the dye transfer occurs, using routine cleaning, it can normally be removed due to Modena's Permablok Plus+ finish.	

\*This term and any corresponding data refer to the typical performance in the specific tests indicated and should not be construed to imply the behavior of this or any other material under actual fire conditions.

*love what you do*

JSI is quality furniture for work and life.

225 CLAY STREET  
JASPER IN 47546  
T: 800.457.4511  
JSIFURNITURE.COM

J.SP.MM.1123.1500

## Cleaning Guide



We recommend cleaning at least once a week to extend the lifespan of the upholstery, which will prevent dirt and contamination buildup and permanent staining. In the event of a spill, wipe off any excess right away with a dry white cloth or fabric, but be careful not to spread onto the remaining surface.



Clean the whole surface in a circular motion using liquid hand soap (pH neutral) and water (1 part soap to 9 parts water). Check the Approved Cleaners guide for recommended cleaning products. Wipe with a clean damp cloth to get rid of any excess soap. Repeat as needed and then let dry.



If there is any buildup that cannot be removed with soapy water, a mixture of 1 part isopropyl alcohol to 9 parts water can be used as a last resort. (Remember, using alcohol on a regular basis can affect the properties of the product.)



Once a month, you can use a soft-bristle brush for a deeper cleaning. Remember, light colors need more care, more often.

**Note:** The cleaning products recommended were used in a laboratory setting. Spradling Group® has no relationship with the manufacturers of those cleaning products.

### \*\*Disinfectants

In addition to cleaning, healthcare facilities maintain disinfecting regimens to reduce the spread of infections. There are a wide variety of available biocides that include bleaches, peroxides, and quaternary ammonium products, among others. They should always be used at the recommended dilution; never in concentrated form. To prolong the life of coated fabrics, the disinfectants should be rinsed off after each use. It should be noted that misuse of disinfectants is the major source of surface deterioration. Spradling International, Inc.® continually evaluates cleaners/disinfectants, and a list of those tested can be found on our website.

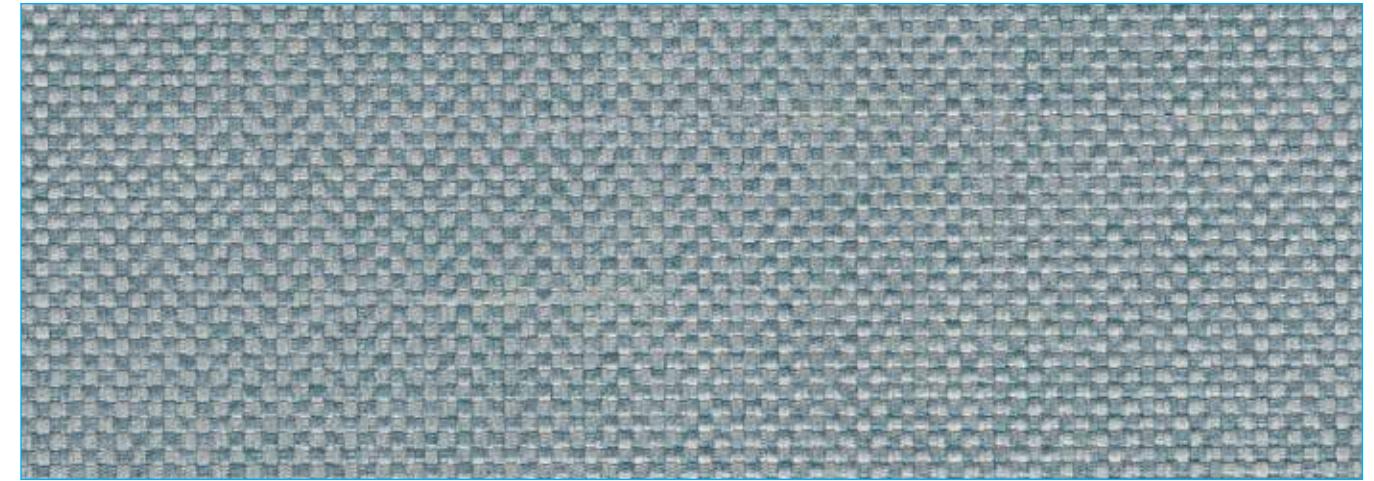
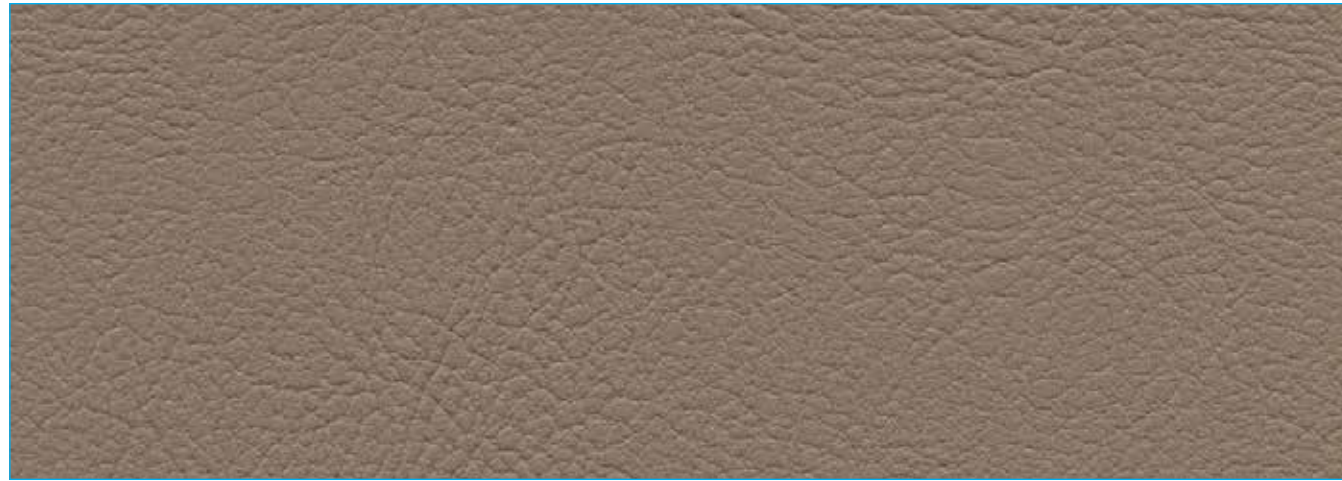
**Abrasion test results exceeding ACT Performance Guidelines are not an indicator of product lifespan. Multiple factors affect fabric durability and appearance retention.**

Permablok® and Permablok® Plus+ are registered trademarks of Spradling Holdings, Inc. Maglia™ and Modena™ are trademarks of Spradling Holdings, Inc.

©2024 Spradling International, Inc.®

04/2024





MOD-2001  
FARRO

MAG-1957  
SKY



MOD-2021  
AUSTER



MOD-2020  
PEARL



MOD-2022  
ELEPHANT



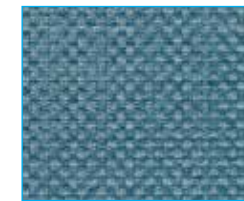
MOD-2018  
COGNAC



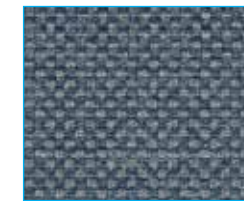
MOD-2019  
NUTMEG



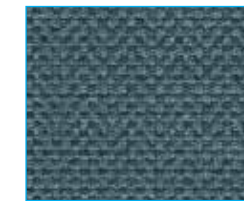
MAG-1958  
AQUA



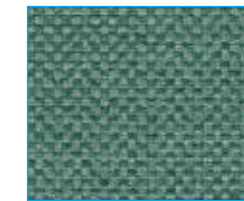
MAG-1952  
SAPPHIRE



MAG-1959  
INDIGO



MAG-1956  
AEGEAN



MAG-1955  
VIRIDIAN



MOD-2006  
MEDALLION



MOD-2005  
CHAMPAGNE



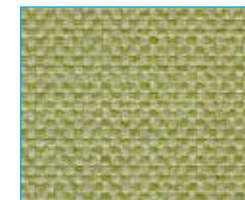
MOD-2015  
HAZE



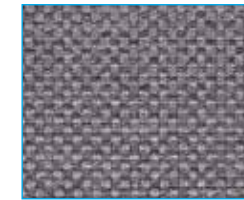
MOD-2016  
BOHEMIAN



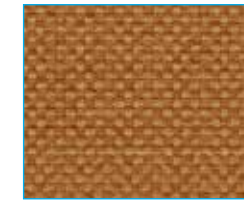
MOD-2017  
TWILIGHT



MAG-1954  
SAGE



MAG-1960  
WISTERIA



MAG-1962  
CLAY



MAG-1961  
GOLDENROD



MAG-1951  
DESERT



MOD-2009  
SANCTUARY



MOD-2012  
ERIE



MOD-2013  
TITAN



MOD-2003  
TANDOORI



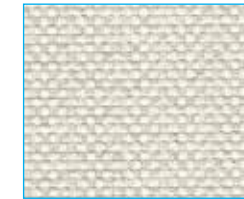
MOD-2004  
MANDARIN



MAG-1963  
CORAL



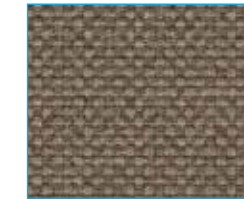
MAG-1964  
ROSE



MAG-1953  
VANILLA



MAG-1965  
DRIFTWOOD



MAG-1966  
TRUFFLE



MOD-2007  
FRESH



MOD-2011  
AZURE



MOD-2002  
BLUEBIRD



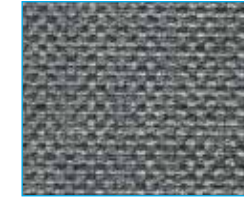
MOD-2010  
CYPRESS



MOD-2014  
INK



MAG-1967  
ALASKA



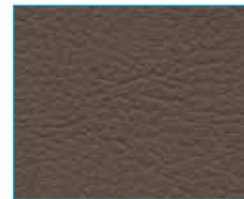
MAG-1968  
THUNDER



MOD-2008  
SEAGRASS



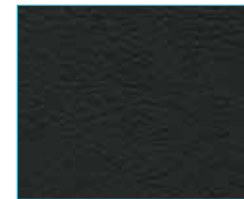
MOD-2024  
SIDEWALK



MOD-2023  
COCOA



MOD-2025  
GRAPHITE



MOD-2026  
BLACK