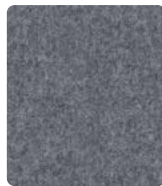




Blazer
Silverdale CUZ28



Blazer
Dartmouth CUZ2Q



Blazer
Surrey CUZ1E



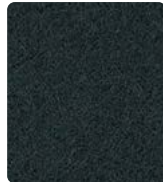
Blazer
Silcoates CUZ30



Blazer
Glenalmond CUZ62



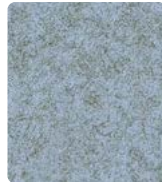
Blazer
Newcastle CUZ1W



Blazer
Hull CUZ1P



Blazer
Latymer CUZ33



Blazer
Plymouth CUZ1R



Blazer
Camphill CUZ1K



Blazer
Bryanston CUZ53



Blazer
Dunhurst CUZ58



Blazer
Eynesbury CUZ2W



Blazer
Goldsmith CUZ39



Blazer
Handcross CUZ63



Blazer
Magdalene CUZ21



Blazer
Holyoke CUZ2T



Blazer
Scottsdale CUZ3E



Synergy
Mix LDS17



Synergy
Chemistry LDS35



Synergy
Partner LDS16



Synergy
Serendipity LDS08



Synergy
Affix LDS32



Synergy
Affinity LDS74



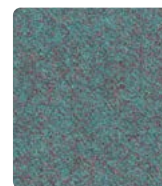
Synergy
Group LDS59



Synergy
Family LDS58



Synergy
Support LDS55



Synergy
Kinship LDS56



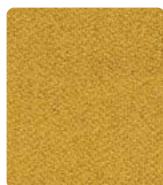
Synergy
Append LDS49



Synergy
Pact LDS53



Synergy
Gather LDS46



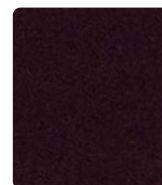
Synergy
Lateral LDS28



Synergy
Summon LDS45



Synergy
Together LDS70



Synergy
Process LDS88



Synergy
Assemble LDS61

Technical information



Blazer

Composition

100% Pure New Wool

Environment

Certified to Indoor Advantage™ Gold
Rapidly renewable and compostable
Non metallic dyestuffs

Width

54 inches minimum

Abrasion Resistance*

ASTM D4157 Wyzenbeek method, Heavy Duty Upholstery
Independently certified to $\geq 75,000$ double rubs
Covered by a full and comprehensive 10 year guarantee (full details available)

Flammability

California Technical Bulletin 117 - 2013
NFPA 260 + UFAC - Class 1
BS 7176 Low Hazard

ASTM E84 Class 1 or A (Adhered)
ASTM E84 Class 1 or A (Un-adhered)

Optional please specify when ordering:

NFPA 701 when FR treated

Note: Flammability performance is dependent on components used. Our certificates show what substrates have been used in our tests. For composite tests customers must ensure their complete furniture meets the necessary standards.

Cleaning

W/S

Clean with a water-based cleaning agent or solvent: Depending on the stain, use a dry-cleaning solvent, the foam of a mild detergent, or upholstery shampoo.

*Camira recognizes that the number of Wyzenbeek double rubs does not reflect the actual wear performance of fabrics. We're so confident in the durability of our products that we provide a robust 10 year guarantee (full details available). This product is externally certified, details of which are on our website and available from our customer services team.

Batch to batch variations in shade may occur within commercial tolerances. We reserve the right to alter technical specifications without notice. The Unregistered Design Rights and the Copyright in all designs are the exclusive property of Camira Fabrics Limited.

Synergy

Composition

95% Pure New Wool, 5% Nylon

Environment

Certified to the EU Ecolabel
Certified to Indoor Advantage™ Gold

Width

54 inches minimum

Abrasion Resistance*

ASTM D4966 Martindale method, Heavy Duty Upholstery
Independently certified to $\geq 100,000$ cycles
Covered by a full and comprehensive 10 year guarantee (full details available)

Flammability

California Technical Bulletin 117 - 2013
NFPA 260 + UFAC - Class 1
BS 7176 Low Hazard

ASTM E84 Class 2 or B (Adhered)
ASTM E84 Class 2 or B (Un-adhered)

Optional please specify when ordering:

ASTM E84 Class 1 or A (Adhered) when FR treated

NFPA 701 when FR treated

Note: Flammability performance is dependent on components used. Our certificates show what substrates have been used in our tests. For composite tests customers must ensure their complete furniture meets the necessary standards.

Cleaning

W/S

Clean with a water-based cleaning agent or solvent: Depending on the stain, use a dry-cleaning solvent, the foam of a mild detergent, or upholstery shampoo.

*Camira recognizes that the number of Martindale cycles does not reflect the actual wear performance of fabrics. We're so confident in the durability of our products that we provide a robust 10 year guarantee (full details available). This product is externally certified, details of which are on our website and available from our customer services team.

Multiple factors affect fabric durability and appearance retention, including end-user application and correct maintenance. Results above 100,000 cycles have not been shown to be a reliable indicator of increased fabric lifespan.

Batch to batch variations in shade may occur within commercial tolerances. We reserve the right to alter technical specifications without notice. The Unregistered Design Rights and the Copyright in all designs are the exclusive property of Camira Fabrics Limited.



JSIFURNITURE.COM

225 Clay Street
Japer, Indiana 47546

800.622.5661 TOLL
812.482.3204 OFFICE
812.482.1548 FAX

camira

For additional information or
sample requests visit:
www.camirafabrics.com

Samples can also be requested
by email at:
memos@camirafabrics.com