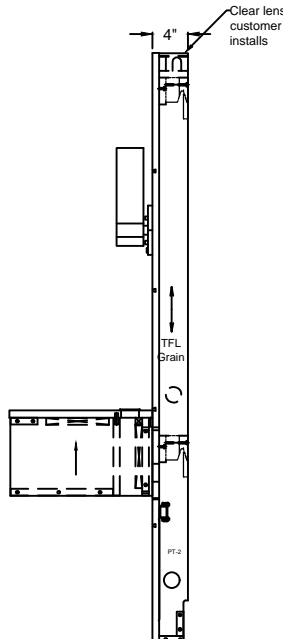
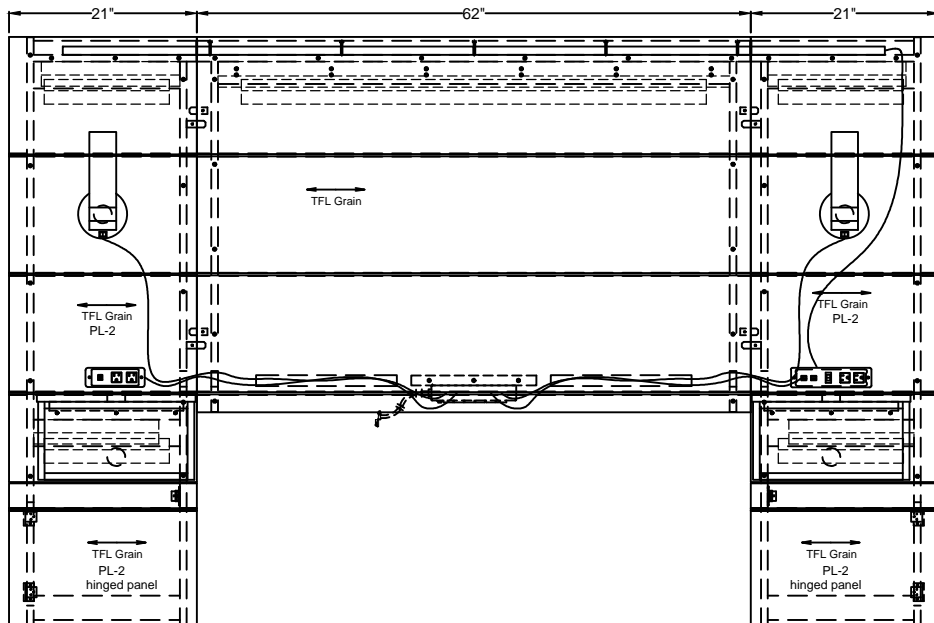
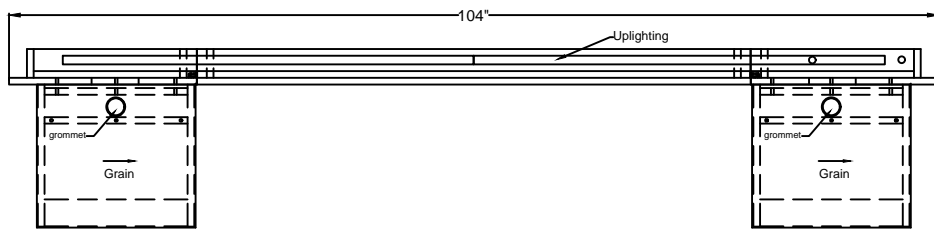



1. Remove (1) 54" Wall Mounting Cleats from back of Center Headboard and (4) 14" from the back of Left and Right extension panel.
2. Remove uplighting & plexiglass (shipped loose) from center headboard assembly, will be needed later after wall assembly is complete.
3. Secure Wall Mounting Cleats (1-54" and 4-14") to wall stud per drawing using desired height. Use stud finder to locate wall studs.
4. Attach Nightstand to Left and Right extension panel. Use locator cleat to spot Nightstand and align holes left to right. Attach with supplied bolt and washers from back side.
5. Hang Center Headboard Assembly on Wall Mounting Cleat on wall, center left to right.
6. Hang Left and Right extension panels on the wall cleats, allow a small space for the alignment connectors.
7. Run wires from sconces & power supplies on left & right extension to power supply mounted on back of center headboard assembly.
8. Carefully slide Left and Right extension panels together using alignment connectors attached to backside. Assembly is complete when pushed together tight.
9. place uplighting in desired location, center left to right. Secure and mount plexiglass. Run power supply to extension with switch.



JP66104QH-C-01		
Left Extension Panel	JP2166BP-C-01-L	4d x 21w x 66h
Right Extension Panel	JP2166BP-C-01-R	4d x 21w x 66h
Headboard	JP4262QH-C-01	4d x 62w x 42h
Nightstand	JP1617NS-C-01	16d x 17.75w x 9.56h

		JASPER GROUP BRAND	
Customer ID			
Designed by	Checked by	Approved by-date	
EW	EW		
JP66104QH-C-01		Date	Scale
		1/22/15	
Queen Headboard Assembly			
Size	4d x 104w x 66h		Sheet