

Satisse - Overview

Freestanding & Seat Linking



Armless Guest
[See pg 10](#)



Guest
[See pg 11](#)



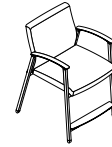
Two Seat Guest
[See pg 13](#)



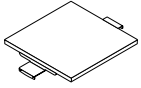
Bariatric
[See pg 15](#)



Patient
[See pg 17](#)



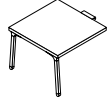
Easy Access
[See pg 19](#)



Connecting Inline
[See pg 22](#)



Connecting Corner
[See pg 22](#)



Connecting End
[See pg 22](#)

Glide Linking



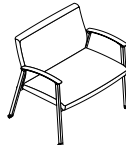
Armless Guest
[See pg 29](#)



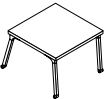
Guest
[See pg 32](#)



Two Seat
[See pg 35](#)



Bariatric
[See pg 38](#)



Inline Glide Linking
[See pg 41](#)



Glide Linking Corner
[See pg 41](#)

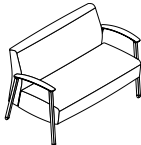


Glide Linking End (Right)
[See pg 41](#)

Lounge

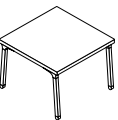


Single Seat
[See pg 45](#)

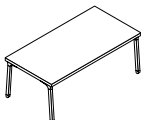


Two Seat
[See pg 46](#)

Freestanding Tables



Side Table
[See pg 26](#)



Magazine Table
[See pg 27](#)

Replacement Parts - [begin on pg 47](#)

Satisse Order Check List:



Specify:

- 1. Model Number
- 2. Upholstery Selection
 - A. Single Upholstery Models: Vendor, Pattern and Color
 - B. Multiple Upholstery Models (_M): Vendor, Pattern and Color each per zone
- 3. Moisture Barrier - Seat Only - upcharge applies, Seat and Back - upcharge applies
- 4. Arm Caps - Polyurethane, 3D Laminate, Solid Surface or Wood
- 5. Metal Frame Finish
- 6. Glide
- 7. Top Surface Material - specify material and finish

Example:

20SG1 | Momentum | Silica | Alloy | MB1 | SGU | SNK | G10
 (model #) | (fabric vendor) | (pattern name) | (pattern color) | (moisture barrier) | (polyurethane arm cap) | (metal frame finish) | (glide)

1. Model Number - Consider the application and connection method when specifying a model. Select from freestanding & seat linking or glide linking.

2. Upholstery Selection - Please supply the following:
 Fabric vendor/ Pattern name/ Pattern color

[For a complete list of JSI Standard and Graded-In Textiles click here](#)

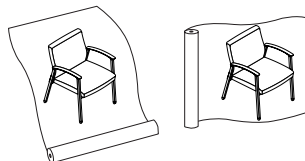
- Indicate direction of fabric - Railroaded or Up the Roll
- Please provide illustration, if available

All COM orders must include the following:

- Vendor's name, pattern name and color
- Sample of the fabric attached to the order
- Model numbers of items for fabric application
- Special application instructions
- Customer and purchase order number

Ship prepaid COM material to:
 JSI
 Attn: COM Department
 201 East Martin Street
 Receiving B, Dock 71
 Orleans, IN 47452

Application of fabric:
 Up the Roll Railroaded



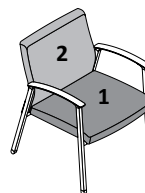
All COM orders will ship at standard lead time from receipt of COM except for orders requiring special custom matched finishes.

Upholstery Application

Satisse offers the ability to be specified with multiply upholsteries to create a unique look.

Both upholstery styles are presented in the price list and eTools. Models not ending in a _M will be upholstered in the single pholstery for the complete unit.

Models ending with a _M designate multiple upholstery zones will be specified (ex: 20SG1_M) To calculate pricing, add base price + zone 1 upcharge + zone 2 upcharge.



Zone 1 = Seat
 Zone 2 = Back

- 3. Moisture Barrier** - offers further protection from fluids
- NMB No Moisture Barrier
 - MB1 Moisture Barrier Seat Only - upcharge applies
 - MB2 Moiserer Barrier Seat & Back - upcharge applies

4. Arm Caps

Freestanding & Seat Linking chairs are available in narrow and wide arm width models.



20SG1

Guest Chair with Narrow Arms

1 3/4" arm width



20SGWA1

Guest Chair with Wide Arms

2 1/2" width at center tapers to 2" front and back

Glide linking models are available in narrow width arms only.

Arm Caps are available in four different materials:

Polyurethane (PAC) - standard

- MBK Matte Black
- SGU Stone Grey

3D Laminate (3LAC) - upcharge applies

- BEL Belair
- FLO Florence Walnut
- PIL Pilsner
- PIN Pinnacle Walnut

Solid Surface (SAC) - upcharge applies

- DWH Designer White

Wood (WAC) - upcharge applies

- | | |
|---------------------|---------------------|
| BAR Barrel | MCH Mocha |
| BRK Brickdust | OBK Outback |
| BUF Buff | PIL Pilsner |
| CSK Cask | PIN Pinnacle Walnut |
| CND Cinder | RAV Raven |
| CLY Clay | RYE Rye |
| EGR Egret | SAB Sable |
| FAW Fawn | SAD Saddle |
| FLX Flax | SIE Sienna |
| FLN Flint | TRF Truffle |
| FLO Florence Walnut | UMB Umber |
| LOF Loft | VAL Valley |
| MES Mesa | WAL Walnut Heights |
| MIN Mineral | |

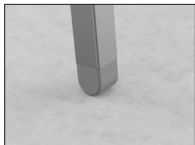
5. Metal Frame Finish

- | | |
|-------------------|-----------------|
| ABZ Aged Bronze | PEW Pewter |
| ASL Arctic Silver | SBZ Soft Bronze |
| GLD Gold | SNK Soft Nickel |
| MBK Matte Black | |

6. Glides

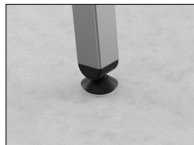
The style of glides offered on Satisse are dependent upon the model or connection method selected.

Freestanding & Seat Linking



G10

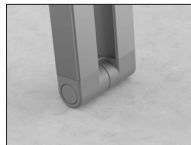
Standard Glide



G15

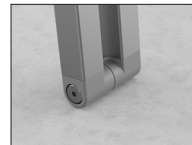
Leveling Glide
(Black)

Glide Linking



G20

MagLinX™



G25

BoltLinX

The G15 leveling glide is always black, the other glides are color coordinated to the metal frame finish selected.

Arctic Silver frame finish dictates Arctic Silver glides.

Pewter or Soft Nickel frame finishes dictate Stone Grey glides.

Aged Bronze, Soft Bronze or Matte Black frame finishes dictate Matte Black glides.

7. Tables

Coordinating tables are available in seat linking, glide linking and freestanding options.

A. Top Material



TFL/HPL Laminate

- ALB Alabaster
- BEL Belair
- BLK Black
- BRK Brickdust
- BBL Bridal Blanco
- CSK Cask
- CLY Clay
- DWH Designer White
- EGR Egret
- FAW Fawn
- FLN Flint
- FLO Florence Walnut
- LOF Loft
- MES Mesa
- MIN Mineral
- MCH Mocha
- OBK Outback
- PIL Pilsner
- PIN Pinnacle Walnut
- SHD Shadow
- SLG Slate Grey
- UMB Umber
- VAL Valley
- WAL Walnut Heights
- WEA Weathered Ash
- ZEN Zen Grey



Essentials Veneer

- BRK Brickdust
- CSK Cask
- FAW Fawn
- FLX Flax
- FLN Flint
- LOF Loft
- MES Mesa
- MIN Mineral
- MCH Mocha
- OBK Outback
- PIL Pilsner
- SIE Sienna
- TRF Truffle
- UMB Umber
- VAL Valley



3D Laminate

- BEL Belair
- FLO Florence Walnut
- PIL Pilsner
- PIN Pinnacle Walnut



Solid Surface

- DWH Designer White

Artisan Veneer

- BAR Barrel
- BUF Buff
- CIN Cinder
- EGR Egret
- RAV Raven
- SAB Sable
- SAD Saddle

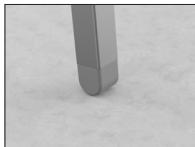
B. Metal Frame Finish

- | | |
|-------------------|-----------------|
| ABZ Aged Bronze | PEW Pewter |
| ASL Arctic Silver | SBZ Soft Bronze |
| GLD Gold | SNK Soft Nickel |
| MBK Matte Black | |

C. Glides

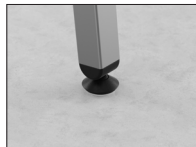
The style of glides offered on Satisse are dependent upon the model or connection method selected.

Freestanding & Seat Linking



G10

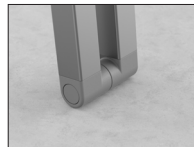
Standard Glide



G15

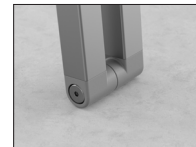
Leveling Glide
(Black)

Glide Linking



G20

MagLinX™



G25

BoltLinX

The G15 leveling glide is always black, the other glides are color coordinated to the metal frame finish selected.

Arctic Silver frame finish dictates Arctic Silver glides.

Pewter or Soft Nickel frame finishes dictate Stone Grey glides.

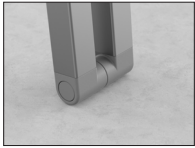
Aged Bronze, Soft Bronze or Matte Black frame finishes dictate Matte Black glides.

Creating Configuration with Chairs and Tables

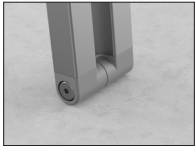
Satisse provides two distinct techniques of creating solutions for public seating needs, in the healthcare and private sector.

Glide Linking

Glide Linking is quick connect/disconnect system linking chairs and tables. When patent-pending MagLinx™ glide is specified there is no need for additional hardware.



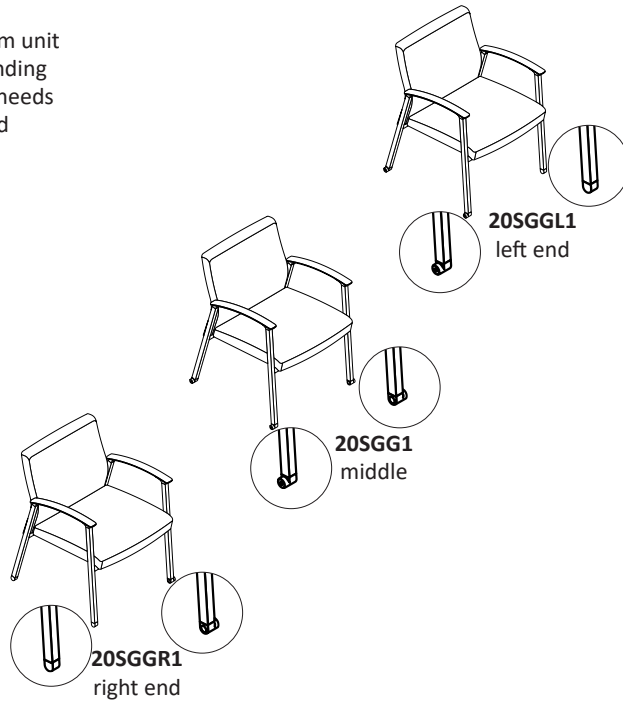
MagLinx™ glides afford a strong connection from unit to unit. Simply align one chair up to a corresponding unit and they snap into place. When the space needs to be rearranged, the units can be quickly pulled apart and reallocated.



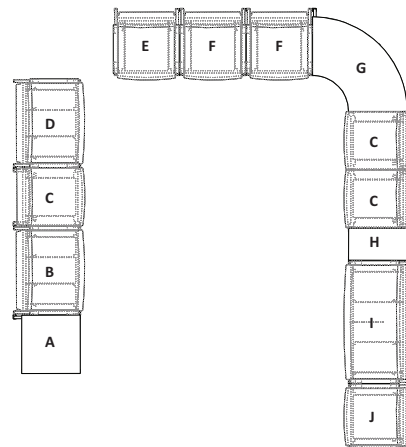
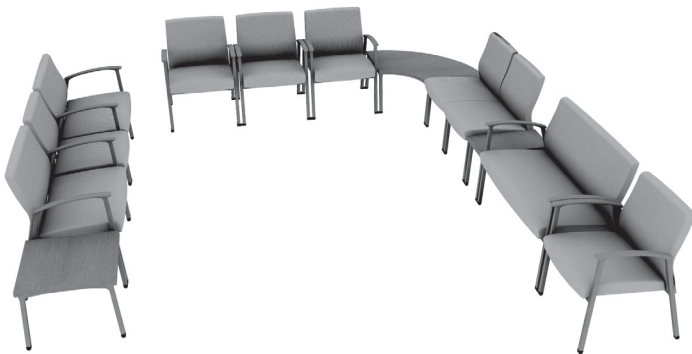
For solutions requiring a more permanent attachment, specify the **BoltLinx** glide which replaces the magnet with a mechanical fastened through bolt.

Right end and left end chairs and tables are available to finish the end of a configuration with a standard glide.

Glide linking models always face the same direction when linked together.



Below illustrates a combination of models to create possible configurations.



Glide Linking

- A 20TEGR2222T
- B 20SBG1
- C 20SGXAG1
- D 20SBGL1
- E 20SGGR1
- F 20SGG1
- G 20TCG3535T
- H 20TIG12222T
- I 20SGG2
- J 20SGGL1

Seat Linking

An alternate solution to create a run of chairs is to use the connecting hardware at the seat of freestanding models.



Connecting hardware can be placed between two freestanding chairs, and accomodates seat linking armless, narrow or wide arm models.

Connecting tables come with their own brackets and do not require hardware to be ordered separately.

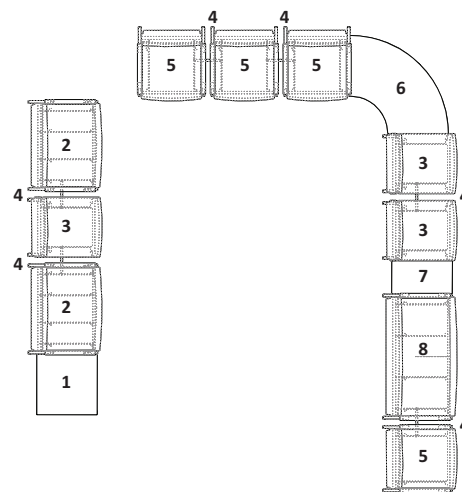


Connecting corner and end tables with supporting legs can be used with all freestanding chairs except easy access.



Connecting inline tables that do not have a support leg can be specified with all freestanding chairs.

Below illustrates a combination of models to create possible configurations. Freestanding chairs that are linked with the additional connecting hardware can face opposite directions.



Seat Linking

- 1 20TE2222T
- 2 20SB1
- 3 20SGXA1
- 4 20SCH Connect Hardware
- 5 20SG1
- 6 20T3535T
- 7 20TI1222T
- 8 20SG2

Satisse Features and Options



Satisse frames are fully welded heavy gauge powder coated steel. Available in seven standard finishes.



Polyurethane Armcaps are standard and provide durability, comfort and ease of cleanability. Available in two colors Stone Grey and Matte Black.



Easy Replacement Parts ensure easy part replacement if damaged. This includes chair arms, seat and back. Find the full list of replaceable parts starting on [page 47](#).



3D Laminate Armcaps are available in four [woodgrain finishes](#) and provide an alternate to real wood for ease of cleanability. Upcharge applies.



Clean Out All Satisse seating models come with a clean out feature, allowing debris, dirt and liquids to easily fall onto the floor for effortless maintenance.



Solid Surface Armcaps are available in Designer White providing enhanced durability and cleanability. Upcharge applies.



Wall Saver Satisse chair leg design prevents wall damage by keeping the back away from the wall.



Solid Wood Armcaps are available in a variety of finishes. Upcharge applies.

arm widths



narrow arm
- glide linking chairs
- available in freestanding and seat linking chairs



wide arm
- lounge
- available in freestanding and seat linking chairs

Satisse Arms are available in a narrow arm or wide arm based on model type. The pommel arm grip is subtly curved to support visitors as they shift to stand.

Satisse Features and Options

linking options



glide linking chairs
- MagLinx™ or BoltLinx glides
- narrow arm models only



seat linking chairs
- connecting hardware joins freestanding guest chairs
- standard or leveling glides
- narrow or wide arm models

Satisse offers two methods to link or gang seating and tables together. Glide linking models link with a patent-pending MagLinx™ connectors held with a strong magnet for toolless installation. A BoltLinx option is also available.

Seat Linking are freestanding models that can be joined in the field with connecting hardware sold separately. Tables ship with connecting hardware.

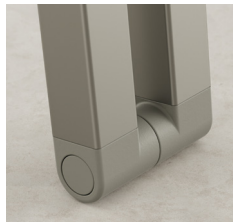


standard

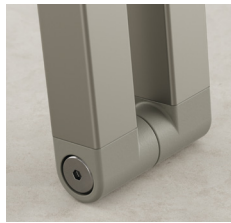


leveling

Glides for freestanding and seat linking chairs and tables are available with a standard glide color coordinated to the frame finish or a black leveling glide at an upcharge.



MagLinx™



BoltLinx

Glide Linking models for chairs and tables are available with a standard glide color coordinated to match the frame finish.



Coordinating Tables are available in seat linking, glide linking and freestanding options. Finish options include laminate, 3D laminate, veneer and solid surface.

Multiple Upholstery models allow a combination of two upholstery covers on the same unit. See price list for upcharges per model.

Moisture Barrier option is available when a fabric does not provide a fluid barrier or when extra protection is desired. It helps prevent the passage of liquids to the inside of upholstered components.

Weight Capacities are as follows:

- 400 lb. per seat. Exceeds BIFMA Seating Drop Test to 500 lbs.
- 600 lb. Bariatric. Exceeds BIFMA Seating Drop Test to 750 lbs.

Testing

ANSI/BIFMA X5.41 (400 lb)-2021 - Large Occupant Public and Lounge Seating Tests¹
ANSI/BIFMA X5.41 (600 lb)-2021 - Large Occupant Public and Lounge Seating Tests²
Tested for 24-hour duty cycle

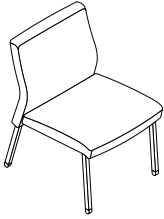
¹ Meets all criteria, except the minimum seat width

² Limited to Bariatric models only

Freestanding & Seat Linking

Description + General Information

Armless Guest Chair



Dimensions	D	W	H	Shipping	
Overall	26 ¾	22	33	Ctn Wt	33
Seat	20	21 ½	18 ½	Cu Ft	14

	Single Upholstery	Seat Zone 1	Back Zone 2
COM Ydg	1 ¾	1	1 ¼
COL Sq Ft	35	20	25

Single Upholstery Specify: Model | Upholstery | Moisture Barrier | Metal Frame Finish | Glide Option

20SGXA1														
	COM	COL	A	B	C	D	E	F	G	H	I	J	L1	L2
Single Uph	\$1,092	\$1,192	\$1,108	\$1,139	\$1,192	\$1,261	\$1,331	\$1,438	\$1,553	\$1,676	\$1,868	\$2,098	\$1,638	\$1,791

Multiple Upholstery Specify: Model | Seat Upholstery | Back Upholstery | Moisture Barrier | Metal Frame Finish | Glide Option

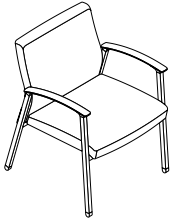
20SGXA1_M														
Base Price:	To the Base Price, add the appropriate upcharges by grade, per zone													
	COM	COL	A	B	C	D	E	F	G	H	I	J	L1	L2
Seat - Zone 1	+N/A	+\$58	+\$9	+\$27	+\$58	+\$97	+\$136	+\$198	+\$264	+\$334	+\$443	+\$575	+\$312	+\$400
Back - Zone 2	+N/A	+\$72	+\$11	+\$33	+\$72	+\$121	+\$170	+\$247	+\$330	+\$417	+\$554	+\$719	+\$390	+\$500

Model	Upholstery	Moisture Barrier	Metal Frame Finish	Glide
	Grade Vendor Pattern Colorway	NMB No Moisture Barrier MB1 Moisture Barrier Seat - add \$84 MB2 Moisture Barrier Seat & Back - add \$169	ABZ Aged Bronze ASL Arctic Silver GLD Gold MBK Matte Black PEW Pewter SBZ Soft Bronze SNK Soft Nickel	G10 Non Adjustable Glide G15 Leveling Glide - add \$10

Freestanding & Seat Linking

Description + General Information

Guest Chair with Narrow Arms



Dimensions	D	W	H	Shipping	
Overall	26 ¾	24 ½	33	Ctn Wt	41
Seat	20	21 ½	18 ½	Cu Ft	16
Arm			26 ¼		

	Single Upholstery	Seat Zone 1	Back Zone 2
COM Ydg	1 ¾	1	1 ¼
COL Sq Ft	35	20	25

Single Upholstery Specify: Model | Upholstery | Moisture Barrier | Arm Cap | Metal Frame Finish | Glide Option

20SG1														
	COM	COL	A	B	C	D	E	F	G	H	I	J	L1	L2
Single Uph	\$1,378	\$1,478	\$1,394	\$1,424	\$1,478	\$1,547	\$1,616	\$1,724	\$1,839	\$1,962	\$2,154	\$2,384	\$1,923	\$2,077

Multiple Upholstery Specify: Model | Seat Upholstery | Back Upholstery | Moisture Barrier | Arm Cap | Metal Frame Finish | Glide Option

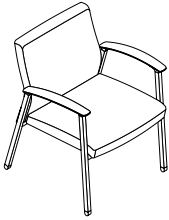
20SG1_M														
Base Price: \$1,378	To the Base Price, add the appropriate upcharges by grade, per zone													
	COM	COL	A	B	C	D	E	F	G	H	I	J	L1	L2
Seat - Zone 1	+N/A	+\$57	+\$9	+\$27	+\$57	+\$97	+\$136	+\$198	+\$263	+\$334	+\$443	+\$575	+\$312	+\$399
Back - Zone 2	+N/A	+\$71	+\$11	+\$33	+\$71	+\$121	+\$170	+\$247	+\$329	+\$417	+\$554	+\$718	+\$390	+\$499

Model	Upholstery	Moisture Barrier	Arm Cap	Metal Frame Finish	Glide
	Grade Vendor Pattern Colorway	NMB No Moisture Barrier MB1 Moisture Barrier Seat - add \$84 MB2 Moisture Barrier Seat & Back - add \$169	PAC Polyurethane Arm Cap Set 3LAC 3D Laminate Arm Cap Set - add \$120 WAC Wood Arm Cap Set - add \$62 SAC Solid Surface Arm Cap Set - add \$352 see arm cap finishes	ABZ Aged Bronze ASL Arctic Silver GLD Gold MBK Matte Black PEW Pewter SBZ Soft Bronze SNK Soft Nickel	G10 Non Adjustable Glide G15 Leveling Glide - add \$10

Freestanding & Seat Linking

Description + General Information

Guest Chair with Wide Arms



Dimensions	D	W	H	Shipping	
Overall	26 ¾	26	33	Ctn Wt	43
Seat	20	21 ½	18 ½	Cu Ft	17
Arm			26 ¼		

	Single Upholstery	Seat Zone 1	Back Zone 2
COM Ydg	1 ¾	1	1 ¼
COL Sq Ft	35	20	25

Single Upholstery Specify: Model | Upholstery | Moisture Barrier | Arm Cap | Metal Frame Finish | Glide Option

20SGWA1														
	COM	COL	A	B	C	D	E	F	G	H	I	J	L1	L2
Single Uph	\$1,389	\$1,489	\$1,405	\$1,435	\$1,489	\$1,558	\$1,627	\$1,735	\$1,850	\$1,973	\$2,165	\$2,395	\$1,934	\$2,088

Multiple Upholstery Specify: Model | Seat Upholstery | Back Upholstery | Moisture Barrier | Arm Cap | Metal Frame Finish | Glide Option

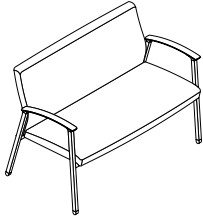
20SGWA1_M														
Base Price:	To the Base Price, add the appropriate upcharges by grade, per zone													
	COM	COL	A	B	C	D	E	F	G	H	I	J	L1	L2
Seat - Zone 1	+N/A	+\$57	+\$9	+\$27	+\$57	+\$97	+\$136	+\$198	+\$263	+\$334	+\$443	+\$575	+\$312	+\$399
Back - Zone 2	+N/A	+\$71	+\$11	+\$33	+\$71	+\$121	+\$170	+\$247	+\$329	+\$417	+\$554	+\$718	+\$390	+\$499

Model	Upholstery	Moisture Barrier	Arm Cap	Metal Frame Finish	Glide
	Grade Vendor Pattern Colorway	NMB No Moisture Barrier MB1 Moisture Barrier Seat - add \$84 MB2 Moisture Barrier Seat & Back - add \$169	PAC Polyurethane Arm Cap Set 3LAC 3D Laminated Arm Cap Set - add \$129 WAC Wood Arm Cap Set - add \$69 SAC Solid Surface Arm Cap Set - add \$357 see arm cap finishes	ABZ Aged Bronze ASL Arctic Silver GLD Gold MBK Matte Black PEW Pewter SBZ Soft Bronze SNK Soft Nickel	G10 Non Adjustable Glide G15 Leveling Glide - add \$10

Freestanding & Seat Linking

Description + General Information

Two Seat Guest Chair with Narrow Arms



Dimensions	D	W	H	Shipping	
Overall	26 ¾	45 ½	33 ¾	Ctn Wt	75
Seat	20	42 ½	18 ½	Cu Ft	28
Arm			26 ¾		

	Single Upholstery	Seat Zone 1	Back Zone 2
COM Ydg	2 ¾	1 ¼	1 ½
COL Sq Ft	60 ½	27 ½	33

Single Upholstery Specify: Model | Upholstery | Moisture Barrier | Arm Cap | Metal Frame Finish | Glide Option

20SG2														
	COM	COL	A	B	C	D	E	F	G	H	I	J	L1	L2
Single Uph	\$2,165	\$2,322	\$2,189	\$2,238	\$2,322	\$2,431	\$2,539	\$2,708	\$2,889	\$3,082	\$3,384	\$3,745	\$3,118	\$3,384

Multiple Upholstery Specify: Model | Seat Upholstery | Back Upholstery | Moisture Barrier | Arm Cap | Metal Frame Finish | Glide Option

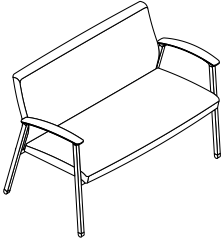
20SG2_M														
Base Price: \$2,165	To the Base Price, add the appropriate upcharges by grade, per zone													
	COM	COL	A	B	C	D	E	F	G	H	I	J	L1	L2
Seat - Zone 1	+N/A	+\$72	+\$12	+\$34	+\$72	+\$121	+\$170	+\$247	+\$330	+\$417	+\$555	+\$719	+\$434	+\$555
Back - Zone 2	+N/A	+\$86	+\$14	+\$40	+\$86	+\$146	+\$204	+\$297	+\$395	+\$501	+\$665	+\$863	+\$521	+\$665

Model	Upholstery	Moisture Barrier	Arm Cap	Metal Frame Finish	Glide
	Grade Vendor Pattern Colorway	NMB No Moisture Barrier MB1 Moisture Barrier Seat - add \$140 MB2 Moisture Barrier Seat & Back - add \$278	PAC Polyurethane Arm Cap Set 3LAC 3D Laminate Arm Cap Set - add \$120 WAC Wood Arm Cap Set - add \$62 SAC Solid Surface Arm Cap Set - add \$352 see arm cap finishes	ABZ Aged Bronze ASL Arctic Silver GLD Gold MBK Matte Black PEW Pewter SBZ Soft Bronze SNK Soft Nickel	G10 Non Adjustable Glide G15 Leveling Glide - add \$10

Freestanding & Seat Linking

Description + General Information

Two Seat Guest Chair with Wide Arms



Dimensions	D	W	H	Shipping	
Overall	26 ¾	47	33 ¾	Ctn Wt	77
Seat	20	42 ½	18 ½	Cu Ft	29
Arm			26 ¼		

	Single Upholstery	Seat Zone 1	Back Zone 2
COM Ydg	2 ¾	1 ¼	1 ½
COL Sq Ft	60 ½	27 ½	33

Single Upholstery Specify: Model | Upholstery | Moisture Barrier | Arm Cap | Metal Frame Finish | Glide Option

20SGWA2														
	COM	COL	A	B	C	D	E	F	G	H	I	J	L1	L2
Single Uph	\$2,196	\$2,352	\$2,220	\$2,268	\$2,352	\$2,461	\$2,570	\$2,739	\$2,919	\$3,112	\$3,414	\$3,776	\$3,149	\$3,414

Multiple Upholstery Specify: Model | Seat Upholstery | Back Upholstery | Moisture Barrier | Arm Cap | Metal Frame Finish | Glide Option

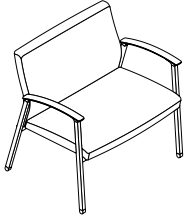
20SGWA2_M														
Base Price: \$2,196	To the Base Price, add the appropriate upcharges by grade, per zone													
	COM	COL	A	B	C	D	E	F	G	H	I	J	L1	L2
Seat - Zone 1	+N/A	+\$72	+\$11	+\$34	+\$72	+\$121	+\$170	+\$247	+\$330	+\$417	+\$555	+\$719	+\$434	+\$555
Back - Zone 2	+N/A	+\$86	+\$14	+\$40	+\$86	+\$146	+\$204	+\$297	+\$395	+\$501	+\$665	+\$863	+\$520	+\$665

Model	Upholstery	Moisture Barrier	Arm Cap	Metal Frame Finish	Glide
	Grade Vendor Pattern Colorway	NMB No Moisture Barrier MB1 Moisture Barrier Seat - add \$140 MB2 Moisture Barrier Seat & Back - add \$278	PAC Polyurethane Arm Cap Set 3LAC 3D Laminate Arm Cap Set - add \$129 WAC Wood Arm Cap Set - add \$69 SAC Solid Surface Arm Cap Set - add \$357 see arm cap finishes	ABZ Aged Bronze ASL Arctic Silver GLD Gold MBK Matte Black PEW Pewter SBZ Soft Bronze SNK Soft Nickel	G10 Non Adjustable Glide G15 Leveling Glide - add \$10

Freestanding & Seat Linking

Description + General Information

Bariatric Chair with Narrow Arms



Dimensions	D	W	H	Shipping	
Overall	26 ¾	33	33	Ctn Wt	41
Seat	20	21 ½	19	Cu Ft	21
Arm			26 ¼		

	Single Upholstery	Seat Zone 1	Back Zone 2
COM Ydg	2 ½	1	1 ½
COL Sq Ft	55	22	33

Single Upholstery Specify: Model | Upholstery | Moisture Barrier | Arm Cap | Metal Frame Finish | Glide Option

20SB1														
	COM	COL	A	B	C	D	E	F	G	H	I	J	L1	L2
Single Uph	\$1,872	\$2,014	\$1,894	\$1,938	\$2,014	\$2,113	\$2,212	\$2,365	\$2,530	\$2,705	\$2,980	\$3,309	\$2,738	\$2,980

Multiple Upholstery Specify: Model | Seat Upholstery | Back Upholstery | Moisture Barrier | Arm Cap | Metal Frame Finish | Glide Option

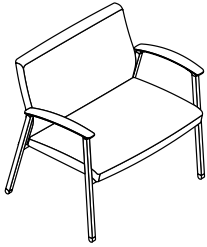
20SB1_M														
Base Price: \$1,872	To the Base Price, add the appropriate upcharges by grade, per zone													
	COM	COL	A	B	C	D	E	F	G	H	I	J	L1	L2
Seat - Zone 1	+N/A	+\$57	+\$9	+\$27	+\$57	+\$97	+\$136	+\$198	+\$264	+\$334	+\$443	+\$575	+\$347	+\$443
Back - Zone 2	+N/A	+\$86	+\$14	+\$40	+\$86	+\$145	+\$204	+\$296	+\$395	+\$500	+\$665	+\$862	+\$520	+\$665

Model	Upholstery	Moisture Barrier	Arm Cap	Metal Frame Finish	Glide
	Grade Vendor Pattern Colorway	NMB No Moisture Barrier MB1 Moisture Barrier Seat - add 140 MB2 Moisture Barrier Seat & Back - add \$278	PAC Polyurethane Arm Cap Set 3LAC 3D Laminate Arm Cap Set - add \$120 WAC Wood Arm Cap Set - add \$62 SAC Solid Surface Arm Cap Set - add \$352 see arm cap finishes	ABZ Aged Bronze ASL Arctic Silver GLD Gold MBK Matte Black PEW Pewter SBZ Soft Bronze SNK Soft Nickel	G10 Non Adjustable Glide G15 Leveling Glide - add \$10

Freestanding & Seat Linking

Description + General Information

Bariatric Chair with Wide Arms



Dimensions	D	W	H	Shipping	
Overall	26 ¾	34 ¾	33 ¾	Ctn Wt	58
Seat	20	30 ¾	19	Cu Ft	22
Arm			26 ¾		

	Single Upholstery	Seat Zone 1	Back Zone 2
COM Ydg	2 ½	1	1 ½
COL Sq Ft	55	22	33

Single Upholstery Specify: Model | Upholstery | Moisture Barrier | Arm Cap | Metal Frame Finish | Glide Option

20SBWA1														
	COM	COL	A	B	C	D	E	F	G	H	I	J	L1	L2
Single Uph	\$1,883	\$2,026	\$1,905	\$1,949	\$2,026	\$2,124	\$2,223	\$2,376	\$2,541	\$2,716	\$2,991	\$3,320	\$2,749	\$2,991

Multiple Upholstery Specify: Model | Seat Upholstery | Back Upholstery | Moisture Barrier | Arm Cap | Metal Frame Finish | Glide Option

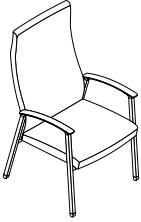
20SBWA1_M														
Base Price:	To the Base Price, add the appropriate upcharges by grade, per zone													
	COM	COL	A	B	C	D	E	F	G	H	I	J	L1	L2
Seat - Zone 1	+N/A	+\$57	+\$9	+\$27	+\$57	+\$97	+\$136	+\$198	+\$264	+\$334	+\$443	+\$575	+\$347	+\$443
Back - Zone 2	+N/A	+\$86	+\$14	+\$40	+\$86	+\$145	+\$204	+\$296	+\$395	+\$500	+\$665	+\$862	+\$520	+\$665

Model	Upholstery	Moisture Barrier	Arm Cap	Metal Frame Finish	Glide
	Grade Vendor Pattern Colorway	NMB No Moisture Barrier MB1 Moisture Barrier Seat - add \$140 MB2 Moisture Barrier Seat & Back - add \$278	PAC Polyurethane Arm Cap Set 3LAC 3D Laminated Arm Cap Set - add \$129 WAC Wood Arm Cap Set - add \$69 SAC Solid Surface Arm Cap Set - add \$357 see arm cap finishes	ABZ Aged Bronze ASL Arctic Silver GLD Gold MBK Matte Black PEW Pewter SBZ Soft Bronze SNK Soft Nickel	G10 Non Adjustable Glide G15 Leveling Glide - add \$10

Freestanding & Seat Linking

Description + General Information

Patient Chair with Narrow Arms



Dimensions	D	W	H	Shipping	
Overall	26 ¾	24 ½	46	Ctn Wt	48
Seat	20	21 ½	18 ½	Cu Ft	22
Arm			26 ¾		

	Single Upholstery	Seat Zone 1	Back Zone 2
COM Ydg	2 ½	1	1 ¾
COL Sq Ft	55	22	38 ½

Single Upholstery Specify: Model | Upholstery | Moisture Barrier | Arm Cap | Metal Frame Finish | Glide Option

20SP1														
	COM	COL	A	B	C	D	E	F	G	H	I	J	L1	L2
Single Uph	\$1,659	\$1,801	\$1,681	\$1,724	\$1,801	\$1,900	\$1,999	\$2,152	\$2,317	\$2,492	\$2,766	\$3,095	\$2,525	\$2,766

Multiple Upholstery Specify: Model | Seat Upholstery | Back Upholstery | Moisture Barrier | Arm Cap | Metal Frame Finish | Glide Option

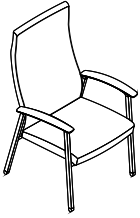
20SP1_M														
Base Price: \$1,659	To the Base Price, add the appropriate upcharges by grade, per zone													
	COM	COL	A	B	C	D	E	F	G	H	I	J	L1	L2
Seat - Zone 1	+N/A	+\$58	+\$9	+\$27	+\$58	+\$97	+\$136	+\$198	+\$264	+\$334	+\$444	+\$575	+\$347	+\$444
Back - Zone 2	+N/A	+\$101	+\$16	+\$47	+\$101	+\$169	+\$238	+\$346	+\$461	+\$584	+\$776	+\$1,006	+\$607	+\$776

Model	Upholstery	Moisture Barrier	Arm Cap	Metal Frame Finish	Glide
	Grade Vendor Pattern Colorway	NMB No Moisture Barrier MB1 Moisture Barrier Seat - add \$84 MB2 Moisture Barrier Seat & Back - add \$169	PAC Polyurethane Arm Cap Set 3LAC 3D Laminate Arm Cap Set - add \$120 WAC Wood Arm Cap Set - add \$62 SAC Solid Surface Arm Cap Set - add \$352 see arm cap finishes	ABZ Aged Bronze ASL Arctic Silver GLD Gold MBK Matte Black PEW Pewter SBZ Soft Bronze SNK Soft Nickel	G10 Non Adjustable Glide G15 Leveling Glide - add \$10

Freestanding & Seat Linking

Description + General Information

Patient Chair with Wide Arms



Dimensions	D	W	H	Shipping	
Overall	26 ¾	26	46	Ctn Wt	50
Seat	20	21 ½	18 ½	Cu Ft	23
Arm			26 ¼		

	Single Upholstery	Seat Zone 1	Back Zone 2
COM Ydg	2 ½	1	1 ¾
COL Sq Ft	55	22	38 ½

Single Upholstery Specify: Model | Upholstery | Moisture Barrier | Arm Cap | Metal Frame Finish | Glide Option

20SPWA1														
	COM	COL	A	B	C	D	E	F	G	H	I	J	L1	L2
Single Uph	\$1,670	\$1,812	\$1,692	\$1,736	\$1,812	\$1,911	\$2,010	\$2,163	\$2,328	\$2,503	\$2,777	\$3,106	\$3,205	\$3,614

Multiple Upholstery Specify: Model | Seat Upholstery | Back Upholstery | Moisture Barrier | Arm Cap | Metal Frame Finish | Glide Option

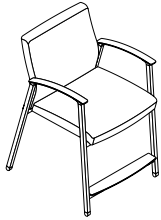
20SPWA1_M														
Base Price: \$1,670		To the Base Price, add the appropriate upcharges by grade, per zone												
	COM	COL	A	B	C	D	E	F	G	H	I	J	L1	L2
Seat - Zone 1	+N/A	+\$58	+\$9	+\$27	+\$58	+\$97	+\$136	+\$198	+\$264	+\$334	+\$444	+\$575	+\$347	+\$444
Back - Zone 2	+N/A	+\$101	+\$16	+\$47	+\$101	+\$169	+\$238	+\$346	+\$461	+\$584	+\$776	+\$1,006	+\$607	+\$776

Model	Upholstery	Moisture Barrier	Arm Cap	Metal Frame Finish	Glide
	Grade Vendor Pattern Colorway	NMB No Moisture Barrier MB1 Moisture Barrier Seat - add \$84 MB2 Moisture Barrier Seat & Back - add \$169	PAC Polyurethane Arm Cap Set 3LAC 3D Laminate Arm Cap Set - add \$129 WAC Wood Arm Cap Set - add \$69 SAC Solid Surface Arm Cap Set - add \$357 see arm cap finishes	ABZ Aged Bronze ASL Arctic Silver GLD Gold MBK Matte Black PEW Pewter SBZ Soft Bronze SNK Soft Nickel	G10 Non Adjustable Glide G15 Leveling Glide - add \$10

Freestanding & Seat Linking

Description + General Information

Easy Access Chair with Narrow Arms



Dimensions	D	W	H	Shipping	
Overall	28	24 ½	39 ½	Ctn Wt	56
Seat	20	21 ½	24	Cu Ft	20
Arm			32 ½		

	Single Upholstery	Seat Zone 1	Back Zone 2
COM Ydg	1 ¾	1	1 ¾
COL Sq Ft	35	22	38 ½

Single Upholstery Specify: Model | Upholstery | Moisture Barrier | Arm Cap | Metal Frame Finish | Glide Option

20SE1														
	COM	COL	A	B	C	D	E	F	G	H	I	J	L1	L2
Single Uph	\$1,570	\$1,670	\$1,585	\$1,616	\$1,670	\$1,739	\$1,808	\$1,915	\$2,031	\$2,153	\$2,345	\$2,576	\$2,115	\$2,269

Multiple Upholstery Specify: Model | Seat Upholstery | Back Upholstery | Moisture Barrier | Arm Cap | Metal Frame Finish | Glide Option

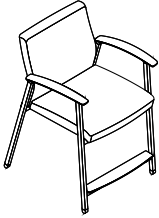
20SE1_M														
Base Price: \$1,570	To the Base Price, add the appropriate upcharges by grade, per zone													
	COM	COL	A	B	C	D	E	F	G	H	I	J	L1	L2
Seat - Zone 1	+N/A	+\$57	+\$9	+\$27	+\$57	+\$97	+\$136	+\$198	+\$263	+\$334	+\$443	+\$575	+\$312	+\$399
Back - Zone 2	+N/A	+\$71	+\$11	+\$33	+\$71	+\$121	+\$170	+\$247	+\$329	+\$417	+\$554	+\$718	+\$390	+\$499

Model	Upholstery	Moisture Barrier	Arm Cap	Metal Frame Finish	Glide
	Grade Vendor Pattern Colorway	NMB No Moisture Barrier MB1 Moisture Barrier Seat - add \$84 MB2 Moisture Barrier Seat & Back - add \$169	PAC Polyurethane Arm Cap Set 3LAC 3D Laminate Arm Cap Set - add \$120 WAC Wood Arm Cap Set - add \$62 SAC Solid Surface Arm Cap Set - add \$352 see arm cap finishes	ABZ Aged Bronze ASL Arctic Silver GLD Gold MBK Matte Black PEW Pewter SBZ Soft Bronze SNK Soft Nickel	G10 Non Adjustable Glide G15 Leveling Glide - add \$10

Freestanding & Seat Linking

Description + General Information

Easy Access Chair with Wide Arms



Dimensions	D	W	H	Shipping	
Overall	28	26	39 ½	Ctn Wt	58
Seat	20	21 ½	24	Cu Ft	21
Arm			32 ½		

	Single Upholstery	Seat Zone 1	Back Zone 2
COM Ydg	1 ¾	1	1 ¼
COL Sq Ft	35	20	25

Single Upholstery Specify: Model | Upholstery | Moisture Barrier | Arm Cap | Metal Frame Finish | Glide Option

20SEWA1														
	COM	COL	A	B	C	D	E	F	G	H	I	J	L1	L2
Single Uph	\$1,600	\$1,700	\$1,616	\$1,647	\$1,700	\$1,769	\$1,838	\$1,946	\$2,061	\$2,184	\$2,376	\$2,606	\$2,146	\$2,299

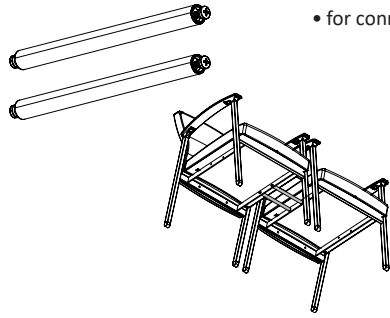
Multiple Upholstery Specify: Model | Seat Upholstery | Back Upholstery | Moisture Barrier | Arm Cap | Metal Frame Finish | Glide Option

20SEWA1_M														
Base Price:	To the Base Price, add the appropriate upcharges by grade, per zone													
	COM	COL	A	B	C	D	E	F	G	H	I	J	L1	L2
Seat - Zone 1	+N/A	+\$58	+\$9	+\$27	+\$58	+\$97	+\$136	+\$198	+\$263	+\$334	+\$443	+\$575	+\$312	+\$399
Back - Zone 2	+N/A	+\$72	+\$11	+\$33	+\$72	+\$121	+\$170	+\$247	+\$329	+\$417	+\$554	+\$718	+\$390	+\$499

Model	Upholstery	Moisture Barrier	Arm Cap	Metal Frame Finish	Glide
	Grade Vendor Pattern Colorway	NMB No Moisture Barrier MB1 Moisture Barrier Seat - add \$84 MB2 Moisture Barrier Seat & Back - add \$169	PAC Polyurethane Arm Cap Set 3LAC 3D Laminated Arm Cap Set - add \$129 WAC Wood Arm Cap Set - add \$69 SAC Solid Surface Arm Cap Set - add \$357 see arm cap finishes	ABZ Aged Bronze ASL Arctic Silver GLD Gold MBK Matte Black PEW Pewter SBZ Soft Bronze SNK Soft Nickel	G10 Non Adjustable Glide G15 Leveling Glide - add \$10

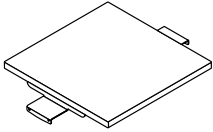
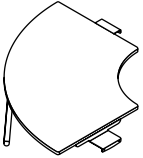
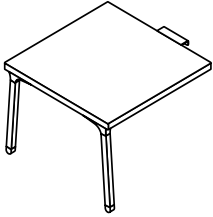
Description	D	W	H	CTN WT	CU FT	① Model	List Price
Connecting Hardware	1 ½	9 ½	¾	2	1	20SCH	\$233

• for connecting freestanding to be seat linking chairs



Model

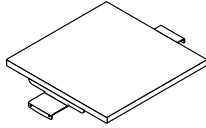
Freestanding & Seat Linking

Description	D	W	H	CTN WT	CU FT	① Model	TFL Laminate	HPL Laminate
Connecting Inline Laminate Table 	21 5/8	21 5/8	16	20	2	20TI2222T	\$550	
	21 5/8	21 5/8	16	20	2	20TI2222H		\$605
	11 7/8	21 5/8	16	15	1	20TI1222T	\$510	
	11 7/8	21 5/8	16	15	1	20TI1222H		\$561
Connecting Corner Laminate Table 	35	35	16	28	4	20TC3535T	\$778	
	35	35	16	28	4	20TC3535H		\$870
	30	30	16	24	3	20TC3030T	\$752	
	30	30	16	24	3	20TC3030H		\$823
22" Connecting End Laminate Table Non-Handed 	21 5/8	21 5/8	16	21	3	20TE2222T	\$612	
	21 5/8	21 5/8	16	21	3	20TE2222H		\$672

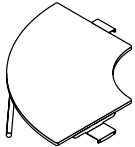
Model	Top Surface	Metal Frame Finish	Glide (Connecting Corner and End)
	L Laminate See Satisse Laminate Finishes	ABZ Aged Bronze ASL Arctic Silver GLD Gold MBK Matte Black PEW Pewter SBZ Soft Bronze SNK Soft Nickel	G10 Non Adjustable Glide G15 Leveling Glide - add \$10

Freestanding & Seat Linking

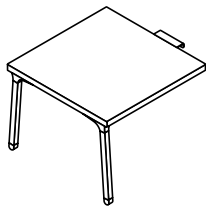
Description	D	W	H	CTN WT	CU FT	① Model	List Price
Connecting Inline 3D Laminate Table	21 5/8	21 5/8	16	20	2	20TI2222D	\$674
	11 7/8	21 5/8	16	15	1	20TI1222D	\$598



Connecting Corner 3D Laminate Table	35	35	16	28	4	20TC3535D	\$1,168
	30	30	16	24	3	20TC3030D	\$1,075



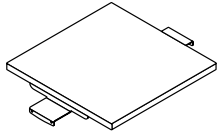
22" Connecting End 3D Laminate Table Non-Handed	21 5/8	21 5/8	16	21	3	20TE2222D	\$746
---	--------	--------	----	----	---	-----------	-------



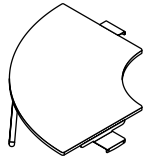
Model	Top Surface	Metal Frame Finish	Glide (Connecting Corner and End)
	D 3D Laminate See Satisse 3D Laminate Finishes	ABZ Aged Bronze ASL Arctic Silver GLD Gold MBK Matte Black PEW Pewter SBZ Soft Bronze SNK Soft Nickel	G10 Non Adjustable Glide G15 Leveling Glide - add \$10

Freestanding & Seat Linking

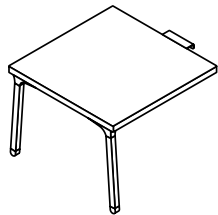
Description	D	W	H	CTN WT	CU FT	Model	List Price
Connecting Inline Solid Surface Table	21 7/8	21 7/8	16	22	2	20TI2222S	\$1,377
	11 7/8	21 7/8	16	15	1	20TI1222S	\$1,213



Connecting Corner Solid Surface Table	35	35	16	51	3	20TC3535S	\$1,843
	30	30	16	29	3	20TC3030S	\$1,662



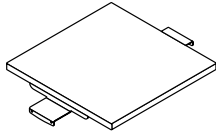
22" Connecting End Solid Surface Table	21 7/8	21 7/8	16	22	2	20TE2222S	\$1,445
---	--------	--------	----	----	---	------------------	----------------



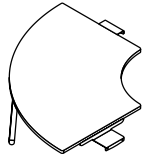
Model	Top Surface	Metal Frame Finish	Glide (Connecting Corner and End)
	S Solid Surface See Satisse Solid Surface Finish	ABZ Aged Bronze ASL Arctic Silver GLD Gold MBK Matte Black PEW Pewter SBZ Soft Bronze SNK Soft Nickel	G10 Non Adjustable Glide G15 Leveling Glide - add \$10

Freestanding & Seat Linking

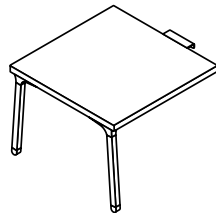
Description	D	W	H	CTN WT	CU FT	① Model	Essentials Veneer	Artisan Veneer
Connecting Inline Veneer Table	21 5/8	21 5/8	16	20	2	20TI2222V	\$799	\$879
	11 7/8	21 5/8	16	15	1	20TI1222V	\$751	\$826



Connecting Corner Veneer Table	35	35	16	28	4	20TC3535V	\$1,231	\$1,354
	30	30	16	24	3	20TC3030V	\$1,109	\$1,220

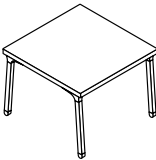


22" Connecting End Veneer Table Non-Handed	21 5/8	21 5/8	16	18	2	20TE2222V	\$887	\$976
--	--------	--------	----	----	---	------------------	-------	-------



Model	Top Surface	Metal Frame Finish	Glide (Connecting Corner and End)
	V Veneer See Satisse Veneer Finishes	ABZ Aged Bronze ASL Arctic Silver GLD Gold MBK Matte Black PEW Pewter SBZ Soft Bronze SNK Soft Nickel	G10 Non Adjustable Glide G15 Leveling Glide - add \$10

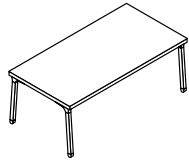
Freestanding Tables

Description	D	W	H	CTN WT	CU FT	① Model	List Price
Side Table 	21 3/8	21 3/8	16	16	2	20TFS2222T - TFL Laminate	\$640
	21 3/8	21 3/8	16	16	2	20TFS2222H - HPL Laminate	\$680
	21 3/8	21 3/8	16	16	2	20TFS2222D - 3D Laminate	\$802
	21 3/8	21 3/8	16	22	2	20TFS2222S - Solid Surface	\$1,487

Model	Top Surface	Metal Frame Finish	Glide
	T Laminate See Satisse TFL Laminate Finishes	ABZ Aged Bronze ASL Arctic Silver	G10 Non Adjustable Glide G15 Leveling Glide - add \$10
	H Laminate See Satisse HPL Laminate Finishes	GLD Gold MBK Matte Black	
	D 3D Laminate See Satisse 3D Laminate Finishes	PEW Pewter	
	S Solid Surface See Satisse Solid Surface Finish	SBZ Soft Bronze SNK Soft Nickel	
	V Veneer See Satisse Veneer Finishes		
	see top surface for pricing		

Freestanding Tables

Description	D	W	H	CTN WT	CU FT	① Model	List Price
Magazine Table	21 5/8	42	16	27	3	20TFM2242T - TFL Laminate	\$767



21 5/8	42	16	27	3	20TFM2242H - HPL Laminate	\$818
--------	----	----	----	---	---------------------------	-------

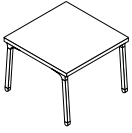
21 5/8	42	16	27	3	20TFM2242D - 3D Laminate	\$1,095
--------	----	----	----	---	--------------------------	---------

21 5/8	42	16	40	3	20TFM2242S - Solid Surface	\$1,782
--------	----	----	----	---	----------------------------	---------

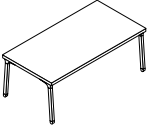
Model	Top Surface	Metal Frame Finish	Glide
	T Laminate See Satisse TFL Laminate Finishes	ABZ Aged Bronze	G10 Non Adjustable Glide
	H Laminate See Satisse HPL Laminate Finishes	ASL Arctic Silver	G15 Leveling Glide - add \$10
	D 3D Laminate See Satisse 3D Laminate Finishes	GLD Gold	
	S Solid Surface See Satisse Solid Surface Finish	MBK Matte Black	
	V Veneer See Satisse Veneer Finishes	PEW Pewter	
	see top surface for pricing	SBZ Soft Bronze	
		SNK Soft Nickel	

Freestanding Tables

Description	D	W	H	CTN WT	CU FT	Model	Essentials Veneer	Artisan Veneer
Side Veneer Table	21 5/8	21 5/8	16	16	2	20TFS2222V	\$914	\$1,005



Magazine Veneer Table	21 5/8	42	16	27	3	20TFM2242V	\$1,050	\$1,155
-----------------------	--------	----	----	----	---	------------	---------	---------

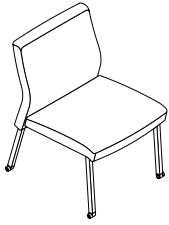


Model	Top Surface	Metal Frame Finish	Glide
	V Veneer See Satisse Veneer Finishes	ABZ Aged Bronze ASL Arctic Silver GLD Gold MBK Matte Black PEW Pewter SBZ Soft Bronze SNK Soft Nickel	G10 Non Adjustable Glide G15 Leveling Glide - add \$10

Glide Linking

Description + General Information

Armless Glide Linking Guest Chair • links on both sides



Dimensions	D	W	H	Shipping	
				Ctn Wt	
Overall	26 ¾	22	33	33	
Seat	20	21 ½	18 ½	Cu Ft	14

	Single Upholstery	Seat Zone 1	Back Zone 2
COM Ydg	1 ¾	1	1 ¼
COL Sq Ft	35	20	25

Single Upholstery Specify: Model | Upholstery | Moisture Barrier | Metal Frame Finish | Glide Option

20SGXAG1														
	COM	COL	A	B	C	D	E	F	G	H	I	J	L1	L2
Single Uph	\$1,184	\$1,283	\$1,199	\$1,230	\$1,283	\$1,353	\$1,422	\$1,529	\$1,644	\$1,767	\$1,959	\$2,189	\$1,729	\$1,882

Multiple Upholstery Specify: Model | Seat Upholstery | Back Upholstery | Moisture Barrier | Metal Frame Finish | Glide Option

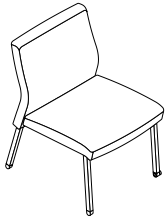
20SGXAG1_M														
Base Price:\$1,184	To the Base Price, add the appropriate upcharges by grade, per zone													
	COM	COL	A	B	C	D	E	F	G	H	I	J	L1	L2
Seat - Zone 1	+N/A	+\$58	+\$9	+\$27	+\$58	+\$97	+\$136	+\$198	+\$264	+\$334	+\$443	+\$575	+\$312	+\$400
Back - Zone 2	+N/A	+\$72	+\$11	+\$33	+\$72	+\$121	+\$170	+\$248	+\$330	+\$418	+\$554	+\$719	+\$390	+\$500

Model	Upholstery	Moisture Barrier	Metal Frame Finish	Glide
	Grade Vendor Pattern Colorway	NMB No Moisture Barrier MB1 Moisture Barrier Seat - add \$84 MB2 Moisture Barrier Seat & Back - add \$169	ABZ Aged Bronze ASL Arctic Silver GLD Gold MBK Matte Black PEW Pewter SBZ Soft Bronze SNK Soft Nickel	G20 MagLinx™ G25 BoltLinx

Glide Linking

Description + General Information

Armless Glide Linking Guest Chair - Right End • links on left as seated



Dimensions	D	W	H	Shipping	
Overall	26 ¾	22	33	Ctn Wt	33
Seat	20	21 ½	18 ½	Cu Ft	14

	Single Upholstery	Seat Zone 1	Back Zone 2
COM Ydg	1 ¾	1	1 ¾
COL Sq Ft	35	20	25

Single Upholstery Specify: Model | Upholstery | Moisture Barrier | Metal Frame Finish | Glide Option

20SGXAGR1														
	COM	COL	A	B	C	D	E	F	G	H	I	J	L1	L2
Single Uph	\$1,184	\$1,283	\$1,199	\$1,230	\$1,283	\$1,353	\$1,422	\$1,529	\$1,644	\$1,767	\$1,959	\$2,189	\$1,729	\$1,882

Multiple Upholstery Specify: Model | Seat Upholstery | Back Upholstery | Moisture Barrier | Metal Frame Finish | Glide Option

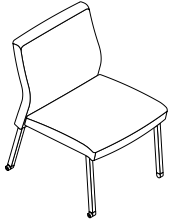
20SGXAGR1_M														
Base Price: \$1,184	To the Base Price, add the appropriate upcharges by grade, per zone													
	COM	COL	A	B	C	D	E	F	G	H	I	J	L1	L2
Seat - Zone 1	+N/A	+\$58	+\$9	+\$27	+\$58	+\$97	+\$136	+\$198	+\$264	+\$334	+\$443	+\$575	+\$312	+\$400
Back - Zone 2	+N/A	+\$72	+\$11	+\$33	+\$72	+\$121	+\$170	+\$248	+\$330	+\$418	+\$554	+\$719	+\$390	+\$500

Model	Upholstery	Moisture Barrier	Metal Frame Finish	Glide
	Grade Vendor Pattern Colorway	NMB No Moisture Barrier MB1 Moisture Barrier Seat - add \$84 MB2 Moisture Barrier Seat & Back - add \$169	ABZ Aged Bronze ASL Arctic Silver GLD Gold MBK Matte Black PEW Pewter SBZ Soft Bronze SNK Soft Nickel	G20 MagLinx™ G25 BoltLinx

Glide Linking

Description + General Information

Armless Glide Linking Guest Chair - Left End • links on right as seated



Dimensions	D	W	H	Shipping	
				Ctn Wt	
Overall	26 ¾	22	33	33	
Seat	20	21 ½	18 ½	Cu Ft	14

	Single Upholstery	Seat Zone 1	Back Zone 2
COM Ydg	1 ¾	1	1 ¼
COL Sq Ft	35	20	25

Single Upholstery Specify: Model | Upholstery | Moisture Barrier | Metal Frame Finish | Glide Option

20SGXAGL1														
	COM	COL	A	B	C	D	E	F	G	H	I	J	L1	L2
Single Uph	\$1,184	\$1,283	\$1,199	\$1,230	\$1,283	\$1,353	\$1,422	\$1,529	\$1,644	\$1,767	\$1,959	\$2,189	\$1,729	\$1,882

Multiple Upholstery Specify: Model | Seat Upholstery | Back Upholstery | Moisture Barrier | Metal Frame Finish | Glide Option

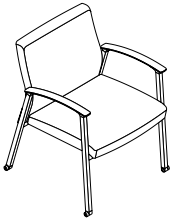
20SGXAGL1_M														
Base Price: \$1,184	To the Base Price, add the appropriate upcharges by grade, per zone													
	COM	COL	A	B	C	D	E	F	G	H	I	J	L1	L2
Seat - Zone 1	+N/A	+\$58	+\$9	+\$27	+\$58	+\$97	+\$136	+\$198	+\$264	+\$334	+\$443	+\$575	+\$312	+\$400
Back - Zone 2	+N/A	+\$72	+\$11	+\$33	+\$72	+\$121	+\$170	+\$248	+\$330	+\$418	+\$554	+\$719	+\$390	+\$500

Model	Upholstery	Moisture Barrier	Metal Frame Finish	Glide
	Grade Vendor Pattern Colorway	NMB No Moisture Barrier MB1 Moisture Barrier Seat - add \$84 MB2 Moisture Barrier Seat & Back - add \$169	ABZ Aged Bronze ASL Arctic Silver GLD Gold MBK Matte Black PEW Pewter SBZ Soft Bronze SNK Soft Nickel	G20 MagLinx™ G25 BoltLinx

Glide Linking

Description + General Information

Glide Linking Guest Chair with Narrow Arms • links on both sides



Dimensions	D	W	H	Shipping	
Overall	26 ¾	24 ½	33	Ctn Wt	41
Seat	20	21 ½	18 ½	Cu Ft	16
Arm			26 ¼		

	Single Upholstery	Seat Zone 1	Back Zone 2
COM Ydg	1 ¾	1	1 ¼
COL Sq Ft	35	20	25

Single Upholstery Specify: Model | Upholstery | Moisture Barrier | Arm Cap | Metal Frame Finish | Glide Option

20SGG1														
	COM	COL	A	B	C	D	E	F	G	H	I	J	L1	L2
Single Uph	\$1,479	\$1,579	\$1,495	\$1,525	\$1,579	\$1,648	\$1,717	\$1,825	\$1,940	\$2,063	\$2,255	\$2,485	\$2,024	\$2,178

Multiple Upholstery Specify: Model | Seat Upholstery | Back Upholstery | Moisture Barrier | Arm Cap | Metal Frame Finish | Glide Option

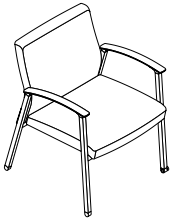
20SGG1_M														
Base Price:	To the Base Price, add the appropriate upcharges by grade, per zone													
	COM	COL	A	B	C	D	E	F	G	H	I	J	L1	L2
Seat - Zone 1	+N/A	+\$58	+\$9	+\$27	+\$58	+\$97	+\$136	+\$198	+\$263	+\$334	+\$443	+\$575	+\$312	+\$399
Back - Zone 2	+N/A	+\$72	+\$11	+\$33	+\$72	+\$121	+\$170	+\$247	+\$329	+\$417	+\$554	+\$718	+\$390	+\$499

Model	Upholstery	Moisture Barrier	Arm Cap	Metal Frame Finish	Glide
	Grade Vendor Pattern Colorway	NMB No Moisture Barrier MB1 Moisture Barrier Seat - add \$84 MB2 Moisture Barrier Seat & Back - add \$169	PAC Polyurethane Arm Cap Set 3LAC 3D Laminated Arm Cap Set - add \$120 WAC Wood Arm Cap Set - add \$62 SAC Solid Surface Arm Cap Set - add \$352 see arm cap finishes	ABZ Aged Bronze ASL Arctic Silver GLD Gold MBK Matte Black PEW Pewter SBZ Soft Bronze SNK Soft Nickel	G20 MagLinx™ G25 BoltLinx

Glide Linking

Description + General Information

Glide Linking Guest Chair with Narrow Arm - Right End • links on left as seated



Dimensions	D	W	H	Shipping	
Overall	26 ¾	24 ½	33	Ctn Wt	41
Seat	20	21 ½	18 ½	Cu Ft	16
Arm			26 ¼		

	Single Upholstery	Seat Zone 1	Back Zone 2
COM Ydg	1 ¾	1	1 ¼
COL Sq Ft	35	20	25

Single Upholstery Specify: Model | Upholstery | Moisture Barrier | Arm Cap | Metal Frame Finish | Glide Option

20SGGR1														
	COM	COL	A	B	C	D	E	F	G	H	I	J	L1	L2
Single Uph	\$1,479	\$1,579	\$1,495	\$1,525	\$1,579	\$1,648	\$1,717	\$1,825	\$1,940	\$2,063	\$2,255	\$2,485	\$2,024	\$2,178

Multiple Upholstery Specify: Model | Seat Upholstery | Back Upholstery | Moisture Barrier | Arm Cap | Metal Frame Finish | Glide Option

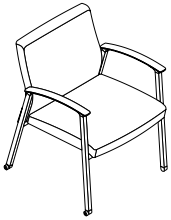
20SGGR1_M														
Base Price:	To the Base Price, add the appropriate upcharges by grade, per zone													
	COM	COL	A	B	C	D	E	F	G	H	I	J	L1	L2
Seat - Zone 1	+N/A	+\$58	+\$9	+\$27	+\$58	+\$97	+\$136	+\$198	+\$263	+\$334	+\$443	+\$575	+\$312	+\$399
Back - Zone 2	+N/A	+\$72	+\$11	+\$33	+\$72	+\$121	+\$170	+\$247	+\$329	+\$417	+\$554	+\$718	+\$390	+\$499

Model	Upholstery	Moisture Barrier	Arm Cap	Metal Frame Finish	Glide
	Grade Vendor Pattern Colorway	NMB No Moisture Barrier MB1 Moisture Barrier Seat - add \$84 MB2 Moisture Barrier Seat & Back - add \$169	PAC Polyurethane Arm Cap Set 3LAC 3D Laminate Arm Cap Set - add \$120 WAC Wood Arm Cap Set - add \$62 SAC Solid Surface Arm Cap Set - add \$352 see arm cap finishes	ABZ Aged Bronze ASL Arctic Silver GLD Gold MBK Matte Black PEW Pewter SBZ Soft Bronze SNK Soft Nickel	G20 MagLinx™ G25 BoltLinx

Glide Linking

Description + General Information

Glide Linking Guest Chair with Narrow Arms - Left End • links on right as seated



Dimensions	D	W	H	Shipping	
Overall	26 ¾	24 ½	33	Ctn Wt	41
Seat	20	21 ½	18 ½	Cu Ft	16
Arm			26 ¼		

	Single Upholstery	Seat Zone 1	Back Zone 2
COM Ydg	1 ¾	1	1 ¼
COL Sq Ft	35	20	25

Single Upholstery Specify: Model | Upholstery | Moisture Barrier | Arm Cap | Metal Frame Finish | Glide Option

20SGGL1														
	COM	COL	A	B	C	D	E	F	G	H	I	J	L1	L2
Single Uph	\$1,479	\$1,579	\$1,495	\$1,525	\$1,579	\$1,648	\$1,717	\$1,825	\$1,940	\$2,063	\$2,255	\$2,485	\$2,024	\$2,178

Multiple Upholstery Specify: Model | Seat Upholstery | Back Upholstery | Moisture Barrier | Arm Cap | Metal Frame Finish | Glide Option

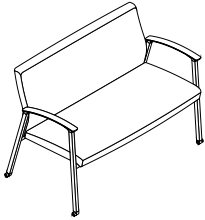
20SGGL1_M														
Base Price:	To the Base Price, add the appropriate upcharges by grade, per zone													
	COM	COL	A	B	C	D	E	F	G	H	I	J	L1	L2
Seat - Zone 1	+N/A	+\$58	+\$9	+\$27	+\$58	+\$97	+\$136	+\$198	+\$263	+\$334	+\$443	+\$575	+\$312	+\$399
Back - Zone 2	+N/A	+\$72	+\$11	+\$33	+\$72	+\$121	+\$170	+\$247	+\$329	+\$417	+\$554	+\$718	+\$390	+\$499

Model	Upholstery	Moisture Barrier	Arm Cap	Metal Frame Finish	Glide
	Grade Vendor Pattern Colorway	NMB No Moisture Barrier MB1 Moisture Barrier Seat - add \$84 MB2 Moisture Barrier Seat & Back - add \$169	PAC Polyurethane Arm Cap Set 3LAC 3D Laminated Arm Cap Set - add \$120 WAC Wood Arm Cap Set - add \$62 SAC Solid Surface Arm Cap Set - add \$352 see arm cap finishes	ABZ Aged Bronze ASL Arctic Silver GLD Gold MBK Matte Black PEW Pewter SBZ Soft Bronze SNK Soft Nickel	G20 MagLinx™ G25 BoltLinx

Glide Linking

Description + General Information

Two Seat Glide Linking Chair with Narrow Arms • links on both ends



Dimensions	D	W	H	Shipping	
Overall	26 ¾	45 ½	33 ¾	Ctn Wt	75
Seat	20	42 ½	18 ½	Cu Ft	28
Arm			26 ¾		

	Single Upholstery	Seat Zone 1	Back Zone 2
COM Ydg	2 ¾	1 ¼	1 ½
COL Sq Ft	60 ½	27 ½	33

Single Upholstery Specify: Model | Upholstery | Moisture Barrier | Arm Cap | Metal Frame Finish | Glide Option

20SGG2														
	COM	COL	A	B	C	D	E	F	G	H	I	J	L1	L2
Single Uph	\$2,269	\$2,426	\$2,293	\$2,341	\$2,426	\$2,534	\$2,643	\$2,812	\$2,993	\$3,186	\$3,487	\$3,849	\$3,222	\$3,487

Multiple Upholstery Specify: Model | Seat Upholstery | Back Upholstery | Moisture Barrier | Arm Cap | Metal Frame Finish | Glide Option

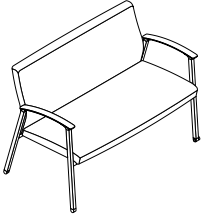
20SGG2_M														
Base Price: \$2,269	To the Base Price, add the appropriate upcharges by grade, per zone													
	COM	COL	A	B	C	D	E	F	G	H	I	J	L1	L2
Seat - Zone 1	+N/A	+\$72	+\$11	+\$34	+\$72	+\$121	+\$170	+\$247	+\$330	+\$417	+\$555	+\$719	+\$434	+\$555
Back - Zone 2	+N/A	+\$86	+\$14	+\$40	+\$86	+\$146	+\$204	+\$297	+\$395	+\$501	+\$665	+\$863	+\$520	+\$665

Model	Upholstery	Moisture Barrier	Arm Cap	Metal Frame Finish	Glide
	Grade Vendor Pattern Colorway	NMB No Moisture Barrier MB1 Moisture Barrier Seat - add \$140 MB2 Moisture Barrier Seat & Back - add \$278	PAC Polyurethane Arm Cap Set 3LAC 3D Laminate Arm Cap Set - add \$120 WAC Wood Arm Cap Set - add \$62 SAC Solid Surface Arm Cap Set - add \$352 see arm cap finishes	ABZ Aged Bronze ASL Arctic Silver GLD Gold MBK Matte Black PEW Pewter SBZ Soft Bronze SNK Soft Nickel	G20 MagLinx™ G25 BoltLinx

Glide Linking

Description + General Information

Two Seat Glide Linking Guest Chair • links on left as seated with Narrow Arm - Right End



Dimensions	D	W	H	Shipping	
Overall	26 ¾	45 ½	33 ¾	Ctn Wt	75
Seat	20	42 ½	18 ½	Cu Ft	28
Arm			26 ¾		

	Single Upholstery	Seat Zone 1	Back Zone 2
COM Ydg	2 ¾	1 ¼	1 ½
COL Sq Ft	60 ½	27 ½	33

Single Upholstery Specify: Model | Upholstery | Moisture Barrier | Arm Cap | Metal Frame Finish | Glide Option

20SGGR2														
	COM	COL	A	B	C	D	E	F	G	H	I	J	L1	L2
Single Uph	\$2,269	\$2,426	\$2,293	\$2,341	\$2,426	\$2,534	\$2,643	\$2,812	\$2,993	\$3,186	\$3,487	\$3,849	\$3,222	\$3,487

Multiple Upholstery Specify: Model | Seat Upholstery | Back Upholstery | Moisture Barrier | Arm Cap | Metal Frame Finish | Glide Option

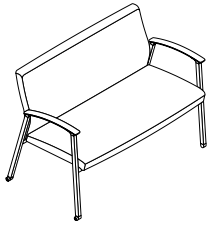
20SGGR2_M														
Base Price: \$2,269	To the Base Price, add the appropriate upcharges by grade, per zone													
	COM	COL	A	B	C	D	E	F	G	H	I	J	L1	L2
Seat - Zone 1	+N/A	+\$72	+\$11	+\$34	+\$72	+\$121	+\$170	+\$247	+\$330	+\$417	+\$555	+\$719	+\$434	+\$555
Back - Zone 2	+N/A	+\$86	+\$14	+\$40	+\$86	+\$146	+\$204	+\$297	+\$395	+\$501	+\$665	+\$863	+\$520	+\$665

Model	Upholstery	Moisture Barrier	Arm Cap	Metal Frame Finish	Glide
	Grade Vendor Pattern Colorway	NMB No Moisture Barrier MB1 Moisture Barrier Seat - add \$140 MB2 Moisture Barrier Seat & Back - add \$278	PAC Polyurethane Arm Cap Set 3LAC 3D Laminate Arm Cap Set - add \$120 WAC Wood Arm Cap Set - add \$62 SAC Solid Surface Arm Cap Set - add \$352 see arm cap finishes	ABZ Aged Bronze ASL Arctic Silver GLD Gold MBK Matte Black PEW Pewter SBZ Soft Bronze SNK Soft Nickel	G20 MagLinx™ G25 BoltLinx

Glide Linking

Description + General Information

Two Seat Glide Linking Guest Chair with Narrow Arms - Left End • links on right as seated



Dimensions	D	W	H	Shipping	
Overall	26 ¾	45 ½	33 ¾	Ctn Wt	75
Seat	20	42 ½	18 ½	Cu Ft	28
Arm			26 ¾		

	Single Upholstery	Seat Zone 1	Back Zone 2
COM Ydg	2 ¾	1 ¼	1 ½
COL Sq Ft	60 ½	27 ½	33

Single Upholstery Specify: Model | Upholstery | Moisture Barrier | Arm Cap | Metal Frame Finish | Glide Option

20SGGL2														
	COM	COL	A	B	C	D	E	F	G	H	I	J	L1	L2
Single Uph	\$2,269	\$2,426	\$2,293	\$2,341	\$2,426	\$2,534	\$2,643	\$2,812	\$2,993	\$3,186	\$3,487	\$3,849	\$3,222	\$3,487

Multiple Upholstery Specify: Model | Seat Upholstery | Back Upholstery | Moisture Barrier | Arm Cap | Metal Frame Finish | Glide Option

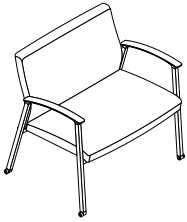
20SGGL2_M														
Base Price: \$2,269	To the Base Price, add the appropriate upcharges by grade, per zone													
	COM	COL	A	B	C	D	E	F	G	H	I	J	L1	L2
Seat - Zone 1	+N/A	+\$72	+\$11	+\$34	+\$72	+\$121	+\$170	+\$247	+\$330	+\$417	+\$555	+\$719	+\$434	+\$555
Back - Zone 2	+N/A	+\$86	+\$14	+\$40	+\$86	+\$146	+\$204	+\$297	+\$395	+\$501	+\$665	+\$863	+\$520	+\$665

Model	Upholstery	Moisture Barrier	Arm Cap	Metal Frame Finish	Glide
	Grade Vendor Pattern Colorway	NMB No Moisture Barrier MB1 Moisture Barrier Seat - add \$140 MB2 Moisture Barrier Seat & Back - add \$278	PAC Polyurethane Arm Cap Set 3LAC 3D Laminate Arm Cap Set - add \$120 WAC Wood Arm Cap Set - add \$62 SAC Solid Surface Arm Cap Set - add \$352 see arm cap finishes	ABZ Aged Bronze ASL Arctic Silver GLD Gold MBK Matte Black PEW Pewter SBZ Soft Bronze SNK Soft Nickel	G20 MagLinx™ G25 BoltLinx

Glide Linking

Description + General Information

Bariatric Glide Linking Chair with Narrow Arm • links on both sides



Dimensions	D	W	H	Shipping	
Overall	26 ¾	33	33 ¾	Ctn Wt	56
Seat	20	30 ¾	19	Cu Ft	21
Arm			26 ¾		

	Single Upholstery	Seat Zone 1	Back Zone 2
COM Ydg	2 ½	1	1 ½
COL Sq Ft	55	22	33

Single Upholstery Specify: Model | Upholstery | Moisture Barrier | Arm Cap | Metal Frame Finish | Glide Option

20SBG1														
	COM	COL	A	B	C	D	E	F	G	H	I	J	L1	L2
Single Uph	\$1,973	\$2,116	\$1,995	\$2,039	\$2,116	\$2,214	\$2,313	\$2,466	\$2,631	\$2,806	\$3,081	\$3,410	\$2,839	\$3,081

Multiple Upholstery Specify: Model | Seat Upholstery | Back Upholstery | Moisture Barrier | Arm Cap | Metal Frame Finish | Glide Option

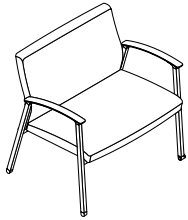
20SBG1_M														
Base Price: \$1,973	To the Base Price, add the appropriate upcharges by grade, per zone													
	COM	COL	A	B	C	D	E	F	G	H	I	J	L1	L2
Seat - Zone 1	+N/A	+\$57	+\$9	+\$27	+\$57	+\$97	+\$136	+\$198	+\$264	+\$334	+\$443	+\$575	+\$347	+\$443
Back - Zone 2	+N/A	+\$86	+\$14	+\$40	+\$86	+\$145	+\$204	+\$296	+\$395	+\$500	+\$665	+\$862	+\$520	+\$665

Model	Upholstery	Moisture Barrier	Arm Cap	Metal Frame Finish	Glide
	Grade Vendor Pattern Colorway	NMB No Moisture Barrier MB1 Moisture Barrier Seat - add \$140 MB2 Moisture Barrier Seat & Back - add \$278	PAC Polyurethane Arm Cap Set 3LAC 3D Laminated Arm Cap Set - add \$120 WAC Wood Arm Cap Set - add \$62 SAC Solid Surface Arm Cap Set - add \$352 see arm cap finishes	ABZ Aged Bronze ASL Arctic Silver GLD Gold MBK Matte Black PEW Pewter SBZ Soft Bronze SNK Soft Nickel	G20 MagLinx™ G25 BoltLinx

Glide Linking

Description + General Information

Bariatric Glide Linking Chair with Narrow Arm - Right End • links on left as seated



Dimensions	D	W	H	Shipping	
Overall	26 ¾	33	33 ¼	Ctn Wt	56
Seat	20	30 ¼	19	Cu Ft	21
Arm			26 ¼		

	Single Upholstery	Seat Zone 1	Back Zone 2
COM Ydg	2 ½	1	1 ½
COL Sq Ft	55	22	33

Single Upholstery Specify: Model | Upholstery | Moisture Barrier | Arm Cap | Metal Frame Finish | Glide Option

20SBGR1														
	COM	COL	A	B	C	D	E	F	G	H	I	J	L1	L2
Single Uph	\$1,973	\$2,116	\$1,995	\$2,039	\$2,116	\$2,214	\$2,313	\$2,466	\$2,631	\$2,806	\$3,081	\$3,410	\$2,839	\$3,081

Multiple Upholstery Specify: Model | Seat Upholstery | Back Upholstery | Moisture Barrier | Arm Cap | Metal Frame Finish | Glide Option

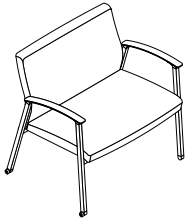
20SBGR1_M														
Base Price:	To the Base Price, add the appropriate upcharges by grade, per zone													
	COM	COL	A	B	C	D	E	F	G	H	I	J	L1	L2
Seat - Zone 1	+N/A	+\$57	+\$9	+\$27	+\$57	+\$97	+\$136	+\$198	+\$264	+\$334	+\$443	+\$575	+\$347	+\$443
Back - Zone 2	+N/A	+\$86	+\$14	+\$40	+\$86	+\$145	+\$204	+\$296	+\$395	+\$500	+\$665	+\$862	+\$520	+\$665

Model	Upholstery	Moisture Barrier	Arm Cap	Metal Frame Finish	Glide
	Grade Vendor Pattern Colorway	NMB No Moisture Barrier MB1 Moisture Barrier Seat - add \$140 MB2 Moisture Barrier Seat & Back - add \$278	PAC Polyurethane Arm Cap Set 3LAC 3D Laminate Arm Cap Set - add \$120 WAC Wood Arm Cap Set - add \$62 SAC Solid Surface Arm Cap Set - add \$352 see arm cap finishes	ABZ Aged Bronze ASL Arctic Silver GLD Gold MBK Matte Black PEW Pewter SBZ Soft Bronze SNK Soft Nickel	G20 MagLinx™ G25 BoltLinx

Glide Linking

Description + General Information

Bariatric Glide Linking Chair with Narrow Arm - Left End • links on right as seated



Dimensions	D	W	H	Shipping	
Overall	26 ¾	33	33 ¾	Ctn Wt	56
Seat	20	30 ¾	19	Cu Ft	21
Arm			26 ¾		

	Single Upholstery	Seat Zone 1	Back Zone 2
COM Ydg	2 ½	1	1 ¼
COL Sq Ft	55	20	25

Single Upholstery Specify: Model | Upholstery | Moisture Barrier | Arm Cap | Metal Frame Finish | Glide Option

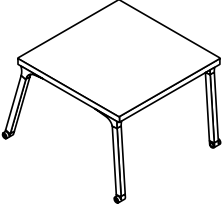
20SBGL1														
	COM	COL	A	B	C	D	E	F	G	H	I	J	L1	L2
Single Uph	\$1,973	\$2,116	\$1,995	\$2,039	\$2,116	\$2,214	\$2,313	\$2,466	\$2,631	\$2,806	\$3,081	\$3,410	\$2,839	\$3,081

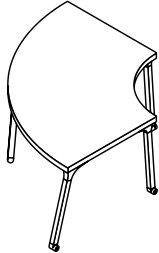
Multiple Upholstery Specify: Model | Seat Upholstery | Back Upholstery | Moisture Barrier | Arm Cap | Metal Frame Finish | Glide Option

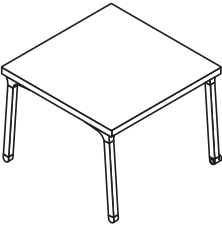
20SBGL1_M														
Base Price:	To the Base Price, add the appropriate upcharges by grade, per zone													
	COM	COL	A	B	C	D	E	F	G	H	I	J	L1	L2
Seat - Zone 1	+N/A	+\$57	+\$9	+\$27	+\$57	+\$97	+\$136	+\$198	+\$264	+\$334	+\$443	+\$575	+\$347	+\$443
Back - Zone 2	+N/A	+\$86	+\$14	+\$40	+\$86	+\$145	+\$204	+\$296	+\$395	+\$500	+\$665	+\$862	+\$520	+\$665

Model	Upholstery	Moisture Barrier	Arm Cap	Metal Frame Finish	Glide
	Grade Vendor Pattern Colorway	NMB No Moisture Barrier MB1 Moisture Barrier Seat - add \$140 MB2 Moisture Barrier Seat & Back - add \$278	PAC Polyurethane Arm Cap Set 3LAC 3D Laminated Arm Cap Set - add \$120 WAC Wood Arm Cap Set - add \$62 SAC Solid Surface Arm Cap Set - add \$352 see arm cap finishes	ABZ Aged Bronze ASL Arctic Silver GLD Gold MBK Matte Black PEW Pewter SBZ Soft Bronze SNK Soft Nickel	G20 MagLinx™ G25 BoltLinx

Glide Linking

Description	D	W	H	CTN WT	CU FT	① Model	TFL Laminate	HPL Laminate
Inline Laminate Table Links on Both Sides 	21 7/8	21 7/8	16	19	2	20TIG2222T	\$713	
	21 7/8	21 7/8	16	19	2	20TIG2222H		\$758
	11 7/8	21 7/8	16	15	1	20TIG1222T	\$698	
	11 7/8	21 7/8	16	15	1	20TIG1222H		\$729

Corner Laminate Table Links on Both Sides 	35	35	16	29	3	20TCG3535T	\$983	
	35	35	16	29	3	20TCG3535H		\$1,075
	30	30	16	24	3	20TCG3030T	\$946	
	30	30	16	24	3	20TCG3030H		\$1,017

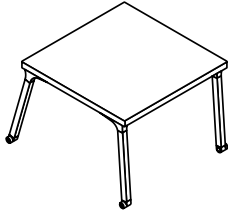
Laminate End Table 	21 7/8	21 7/8	16	16	2	right	20TEGR2222T	\$713	
	21 7/8	21 7/8	16	16	2	right	20TEGR2222H		\$758
	21 7/8	21 7/8	16	16	2	left	20TEGL2222T	\$713	
	21 7/8	21 7/8	16	16	2	left	20TEGL2222H		\$758

right end shown as seated

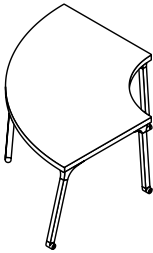
Model	Top Surface	Metal Frame Finish	Glide
	TFL Laminate See Satisse TFL Finishes HPL Laminate See Satisse HPL Finishes see top surface for pricing	ABZ Aged Bronze ASL Arctic Silver GLD Gold MBK Matte Black PEW Pewter SBZ Soft Bronze SNK Soft Nickel	G20 MagLinx™ G25 BoltLinx

Glide Linking

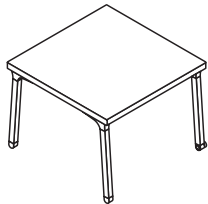
Description	D	W	H	CTN WT	CU FT	Model	List Price
Inline 3D Laminate Table Links on Both Sides	21 7/8	21 7/8	16	19	2	20TIG2222D	\$825
	11 7/8	21 7/8	16	15	1	20TIG1222D	\$772



Corner 3D Laminate Table Links on Both Sides	35	35	16	29	3	20TCG3535D	\$1,360
	30	30	16	24	3	20TCG3030D	\$1,137



End 3D Laminate Table	21 7/8	21 7/8	16	16	2	right	20TEGR2222D	\$825
	21 7/8	21 7/8	16	16	2	left	20TEGL2222D	\$825

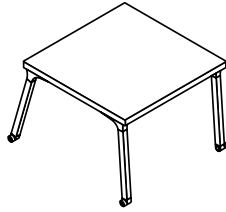


right end shown as seated

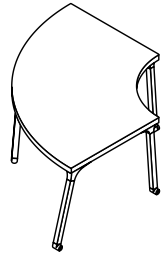
Model	Top Surface	Metal Frame Finish	Glide
	D 3D Laminate See Satisse 3D Laminate Finishes see top surface for pricing	ABZ Aged Bronze ASL Arctic Silver GLD Gold MBK Matte Black PEW Pewter SBZ Soft Bronze SNK Soft Nickel	G20 MagLinx™ G25 BoltLinx

Glide Linking

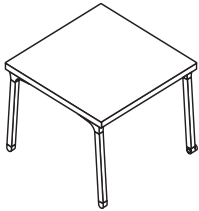
Description	D	W	H	CTN WT	CU FT	① Model	List Price
Inline Solid Surface Table	21 5/8	21 5/8	16	19	2	20TIG2222S	\$1,518
Links on Both Sides	11 7/8	21 5/8	16	16	1	20TIG1222S	\$1,332



Corner Solid Surface Table	35	35	16	51	3	20TCG3535S	\$2,077
Links on Both Sides	30	30	16	29	3	20TCG3030S	\$1,733



End Solid Surface Table	21 5/8	21 5/8	16	22	2	right	20TEGR2222S	\$1,518
	21 5/8	21 5/8	16	22	2	left	20TEGL2222S	\$1,518

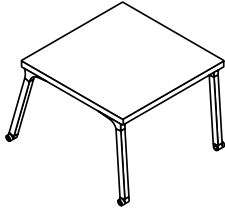


right end shown as seated

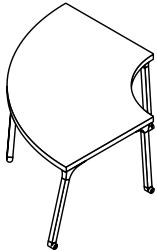
Model	Top Surface	Metal Frame Finish	Glide
	S Solid Surface See Satisse Solid Surface Finish	ABZ Aged Bronze ASL Arctic Silver GLD Gold MBK Matte Black PEW Pewter SBZ Soft Bronze SNK Soft Nickel	G20 MagLinx™ G25 BoltLinx

Glide Linking

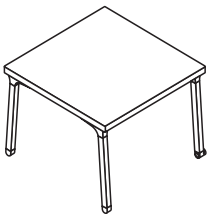
Description	D	W	H	CTN WT	CU FT	Model	Essentials Veneer	Artisan Veneer
Inline Veneer Table	21 5/8	21 5/8	16	19	2	20TIG2222V	\$956	\$1,052
Links on Both Sides	11 7/8	21 5/8	16	15	1	20TIG1222V	\$940	\$1,034



Corner Veneer Table	35	35	16	29	3	20TCG3535V	\$1,437	\$1,581
Links on Both Sides	30	30	16	24	3	20TCG3030V	\$1,170	\$1,287



End Veneer Table	21 5/8	21 5/8	16	16	2	right 20TEGR2222V	\$956	\$1,052
	21 5/8	21 5/8	16	16	2	left 20TEGL2222V	\$956	\$1,052



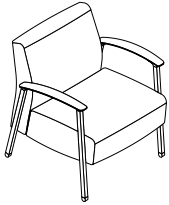
right end shown as seated

Model	Top Surface	Metal Frame Finish	Glide
	V Veneer See Satisse Veneer Finishes	ABZ Aged Bronze ASL Arctic Silver GLD Gold MBK Matte Black PEW Pewter SBZ Soft Bronze SNK Soft Nickel	G20 MagLinx™ G25 BoltLinx

Lounge

Description + General Information

Single Seat Lounge



Dimensions	D	W	H	Shipping	
Overall	27 ¾	27 ½	31 ¾	Ctn Wt	51
Seat	20 ½	23	18	Cu Ft	18
Arm			25 ¼		

	Single Upholstery	Seat Zone 1	Back Zone 2
COM Ydg	2 ¾	1 ½	1 ½
COL Sq Ft	60 ½	33	33

Single Upholstery Specify: Model | Upholstery | Moisture Barrier | Arm Cap | Metal Frame Finish | Glide Option

20SL1														
	COM	COL	A	B	C	D	E	F	G	H	I	J	L1	L2
Single Uph	\$1,941	\$2,098	\$1,965	\$2,014	\$2,098	\$2,207	\$2,315	\$2,484	\$2,665	\$2,858	\$3,160	\$3,521	\$2,894	\$3,160

Multiple Upholstery Specify: Model | Seat Upholstery | Back Upholstery | Moisture Barrier | Arm Cap | Metal Frame Finish | Glide Option

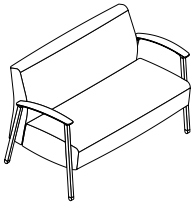
20SL1_M														
Base Price: \$1,941	To the Base Price, add the appropriate upcharges by grade, per zone													
	COM	COL	A	B	C	D	E	F	G	H	I	J	L1	L2
Seat - Zone 1	+N/A	+\$86	+\$14	+\$40	+\$86	+\$146	+\$204	+\$297	+\$395	+\$501	+\$665	+\$862	+\$520	+\$665
Back - Zone 2	+N/A	+\$86	+\$14	+\$40	+\$86	+\$146	+\$204	+\$297	+\$395	+\$501	+\$665	+\$862	+\$520	+\$665

Model	Upholstery	Moisture Barrier	Arm Cap	Metal Frame Finish	Glide
	Grade Vendor Pattern Colorway	NMB No Moisture Barrier Back MB1 Moisture Barrier Seat - add \$140 MB2 Moisture Barrier Seat & Back - add \$278	PAC Polyurethane Arm Cap Set 3LAC 3D Laminate Arm Cap Set - add \$164 WAC Wood Arm Cap Set - add \$77 SAC Solid Surface Arm Cap Set - add \$432 see arm cap finishes	ABZ Aged Bronze ASL Arctic Silver GLD Gold MBK Matte Black PEW Pewter SBZ Soft Bronze SNK Soft Nickel	G10 Non Adjustable Glide G15 Leveling Glide - add \$10

Lounge

Description + General Information

Two Seat Lounge



Dimensions	D	W	H	Shipping	
Overall	27 ¾	50	31 ¾	Ctn Wt	88
Seat	20 ½	42 ½	18	Cu Ft	31
Arm			25 ¼		

	Single Upholstery	Seat Zone 1	Back Zone 2
COM Ydg	3 ¾	1 ½	2 ½
COL Sq Ft	82 ½	33	55

Single Upholstery Specify: Model | Upholstery | Moisture Barrier | Arm Cap | Metal Frame Finish | Glide Option

20SL2														
	COM	COL	A	B	C	D	E	F	G	H	I	J	L1	L2
Single Uph	\$2,639	\$2,853	\$2,672	\$2,738	\$2,853	\$3,001	\$3,149	\$3,380	\$3,626	\$3,889	\$4,301	\$4,794	\$3,939	\$4,301

Multiple Upholstery Specify: Model | Seat Upholstery | Back Upholstery | Moisture Barrier | Arm Cap | Metal Frame Finish | Glide Option

20SL2_M														
Base Price: \$2,639	To the Base Price, add the appropriate upcharges by grade, per zone													
	COM	COL	A	B	C	D	E	F	G	H	I	J	L1	L2
Seat - Zone 1	+N/A	+\$86	+\$14	+\$40	+\$86	+\$145	+\$204	+\$297	+\$395	+\$501	+\$665	+\$862	+\$520	+\$665
Back - Zone 2	+N/A	+\$143	+\$22	+\$66	+\$143	+\$242	+\$340	+\$494	+\$658	+\$834	+\$1,108	+\$1,437	+\$867	+\$1,108

Model	Upholstery	Moisture Barrier	Arm Cap	Metal Frame Finish	Glide
	Grade Vendor Pattern Colorway	NMB No Moisture Barrier MB1 Moisture Barrier Seat - add \$166 MB2 Moisture Barrier Seat & Back - add \$344	PAC Polyurethane Arm Cap Set 3LAC 3D Laminate Arm Cap Set - add \$164 WAC Wood Arm Cap Set - add \$77 SAC Solid Surface Arm Cap Set - add \$432 see arm cap finishes	ABZ Aged Bronze ASL Arctic Silver GLD Gold MBK Matte Black PEW Pewter SBZ Soft Bronze SNK Soft Nickel	G10 Non Adjustable Glide G15 Leveling Glide - add \$10

Replacement Part Matrix for Seats and Backs

Product details are on the following pages:

Model Number	20SRS1	20SRS2	20SRB1	20SRB2	20SRBXA	20SRBP	20SRSB	20SRBB	20SRL1	20SRBL1	20SRL2	20SRBL2
20SGXA1	x				x							
20SGXA1_M	x				x							
20SG1	x		x									
20SG1_M	x		x									
20SGWA1	x		x									
20SGWA1_M	x		x									
20SG2		x		x								
20SG2_M		x		x								
20SGWA2		x		x								
20SGWA2_M		x		x								
20SB1							x	x				
20SB1_M							x	x				
20SBWA1							x	x				
20SBWA1_M							x	x				
20SP1	x					x						
20SP1_M	x					x						
20SPWA1	x											
20SPWA1_M	x											
20SE1	x		x									
20SE1_M	x		x									
20SEWA1	x		x									
20SEWA1_M	x		x									
20SGXAG1	x				x							
20SGXAG1_M	x				x							
20SGXAGR1	x				x							
20SGXAGR1_M	x				x							
20SGXAGL1	x				x							
20SGXAGL1_M	x				x							
20SGG1	x		x									
20SGG1_M	x		x									
20SGGR1	x		x									
20SGGR1_M	x		x									
20SGGL1	x		x									
20SGGL1_M	x		x									
20SGG2		x		x								
20SGG2_M		x		x								
20SGGR2		x		x								
20SGGR2_M		x		x								
20SGGL2		x		x								
20SGGL2_M		x		x								
20SBG1							x	x				
20SBG1_M							x	x				
20SBGR1							x	x				
20SBGR1_M							x	x				
20SBGL1							x	x				
20SBGL1_M							x	x				
20SL1									x	x		
20SL1_M									x	x		
20SL2											x	x
20SL2_M											x	x

Replacement Parts

Description + General Information

Replacement Seat - One Seat



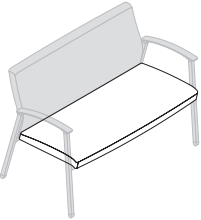
Dimensions	D	W	H	Shipping	
Seat	21 ½	21 ½	4 ½	Ctn Wt	10
				Cu Ft	2
COM Ydg	1				
COL Sq Ft	20				

Single Upholstery Specify: Model | Upholstery

20SRS1

	COM	COL	A	B	C	D	E	F	G	H	I	J	L1	L2
Single Uph	\$420	\$477	\$429	\$446	\$477	\$516	\$556	\$617	\$683	\$753	\$863	\$994	\$731	\$819

Replacement Seat - Two Seat Guest



Dimensions	D	W	H	Shipping	
Seat	21 ½	42 ½	4 ½	Ctn Wt	23
				Cu Ft	3
COM Ydg	2 ¼				
COL Sq Ft	27 ½				

Single Upholstery Specify: Model | Upholstery

20SRS2

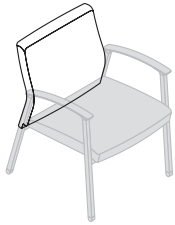
	COM	COL	A	B	C	D	E	F	G	H	I	J	L1	L2
Single Uph	\$788	\$908	\$836	\$862	\$908	\$967	\$1,026	\$1,119	\$1,217	\$1,323	\$1,487	\$1,684	\$1,342	\$1,487

Model	Upholstery	Moisture Barrier
	Grade Vendor Pattern Colorway	NM No Moisture Barrier MB1 Moisture Barrier Seat add \$84 one seat add \$140 two seat

Replacement Parts

Description + General Information

Replacement Back - One Seat

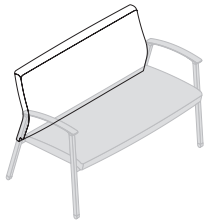


Dimensions	D	W	H	Shipping	
Back	6	21 ½	21 ¼	Ctn Wt	13
				Cu Ft	2
COM Ydg	1 ¼				
COL Sq Ft	25				

Single Upholstery Specify: Model | Upholstery

20SRB1														
	COM	COL	A	B	C	D	E	F	G	H	I	J	L1	L2
Single Uph	\$499	\$570	\$510	\$532	\$570	\$620	\$669	\$746	\$828	\$916	\$1,053	\$1,217	\$888	\$998

Replacement Back - Two Seat Guest



Dimensions	D	W	H	Shipping	
Back	6	42 ½	21 ¼	Ctn Wt	24
				Cu Ft	4
COM Ydg	1 ¼				
COL Sq Ft	33				

Single Upholstery Specify: Model | Upholstery

20SRB2														
	COM	COL	A	B	C	D	E	F	G	H	I	J	L1	L2
Single Uph	\$822	\$908	\$836	\$862	\$908	\$967	\$1,026	\$1,119	\$1,217	\$1,323	\$1,487	\$1,684	\$1,342	\$1,487

Model	Upholstery	Moisture Barrier
	Grade Vendor Pattern Colorway	NM No Moisture Barrier MB3 Moisture Barrier Back add \$90 one back add \$160 two back

Replacement Parts

Description + General Information

Replacement Back - Armless Guest



Dimensions	D	W	H	Shipping	
Back	6	21 ½	21 ¼	Ctn Wt	13
				Cu Ft	2
COM Ydg	1 ¼				
COL Sq Ft	25				

Single Upholstery Specify: Model | Upholstery

20SRBXA														
	COM	COL	A	B	C	D	E	F	G	H	I	J	L1	L2
Single Uph	\$499	\$570	\$510	\$532	\$570	\$620	\$669	\$746	\$828	\$916	\$1,053	\$1,217	\$888	\$998

Replacement Back - Patient



Dimensions	D	W	H	Shipping	
Back	6 ¾	21 ½	34	Ctn Wt	19
				Cu Ft	1
COM Ydg	1 ¾				
COL Sq Ft	38 ½				

Single Upholstery Specify: Model | Upholstery

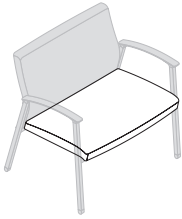
20SRBP														
	COM	COL	A	B	C	D	E	F	G	H	I	J	L1	L2
Single Uph	\$793	\$893	\$809	\$839	\$893	\$962	\$1,031	\$1,139	\$1,254	\$1,377	\$1,569	\$1,799	\$1,400	\$1,569

Model	Upholstery	Moisture Barrier
	Grade Vendor Pattern Colorway	NM No Moisture Barrier MB3 Moisture Barrier Back add \$90 Armless add \$174 Patient

Replacement Parts

Description + General Information

Replacement Seat - Bariatric

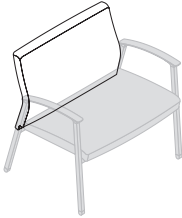


Dimensions	D	W	H	Shipping	
Seat	21 ½	30	4 ½	Ctn Wt	18
				Cu Ft	2
COM Ydg	1				
COL Sq Ft	22				

Single Upholstery Specify: Model | Upholstery

20SRSB														
	COM	COL	A	B	C	D	E	F	G	H	I	J	L1	L2
Single Uph	\$651	\$708	\$660	\$677	\$708	\$747	\$787	\$848	\$914	\$984	\$1,094	\$1,226	\$997	\$1,094

Replacement Back - Bariatric



Dimensions	D	W	H	Shipping	
Back	6	30	21 ¼	Ctn Wt	16
				Cu Ft	3
COM Ydg	1 ½				
COL Sq Ft	33				

Single Upholstery Specify: Model | Upholstery

20SRBB														
	COM	COL	A	B	C	D	E	F	G	H	I	J	L1	L2
Single Uph	\$693	\$778	\$706	\$732	\$778	\$838	\$897	\$989	\$1,088	\$1,193	\$1,357	\$1,555	\$1,213	\$1,357

Model	Upholstery	Moisture Barrier
	Grade Vendor Pattern Colorway	NM No Moisture Barrier MBR3 Moisture Barrier Seat - add \$140 MBR4 Moisture Barrier Back - add \$160

Replacement Parts

Description	D	W	H	CTN WT	CU FT	① Model	List Price (per Arm Cap)
Replacement Arm Cap (for Narrow Arm)	18 ½	1 ¾	1 ½	4	1	20SRSPAC - Polyurethane	\$188

• non-handed can be specified for right or left application



	18 ½	1 ¾	1 ½	3	1	20SRS3LAC - 3D Laminate	\$256
--	------	-----	-----	---	---	--------------------------------	--------------

• non-handed can be specified for right or left application

	18 ½	1 ¾	1 ½	3	1	20SRSWAC - Wood	\$297
--	------	-----	-----	---	---	------------------------	--------------

• non-handed can be specified for right or left application


	18 ½	1 ¾	1 ½	4	1	20SRSSAC - Solid Surface	\$357
--	------	-----	-----	---	---	---------------------------------	--------------

• non-handed can be specified for right or left application

Model	Arm Cap
PAC	Polyurethane Arm Cap
3LAC	3D Laminate Arm Cap
WAC	Wood Arm Cap
SAC	Solid Surface Arm Cap

[see arm cap finishes](#)

Replacement Parts

Description	D	W	H	CTN WT	CU FT		① Model	List Price (per Arm Cap)
Replacement Arm Cap for Wide Arm	18 ½	2 ½	1 ½	4	1	right	20SRWPACR - Polyurethane	\$188
	18 ½	2 ½	1 ½	4	1	left	20SRWPACL - Polyurethane	\$188
 right shown	18 ½	2 ½	1 ½	3	1	right	20SRW3LACR - 3D Laminate	\$256
	18 ½	2 ½	1 ½	3	1	left	20SRW3LACL - 3D Laminate	\$256
	18 ½	2 ½	1 ½	3	1	right	20SRWWACR - Wood	\$297
	18 ½	2 ½	1 ½	3	1	left	20SRWWACL - Wood	\$297
	18 ½	2 ½	1 ½	4	1	right	20SRWSACR - Solid Surface	\$357
	18 ½	2 ½	1 ½	4	1	left	20SRWSACL - Solid Surface	\$357

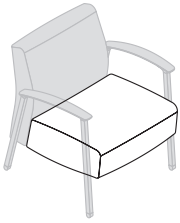
Model	Arm Cap
PAC	Polyurethane Arm Cap
3LAC	3D Laminate Arm Cap
WAC	Wood Arm Cap
SAC	Solid Surface Arm Cap

[see arm cap finishes](#)

Replacement Parts

Description + General Information

Replacement Seat - Lounge

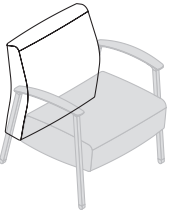


Dimensions	D	W	H	Shipping	
Seat	22 ¾	23	9 ½	Ctn Wt	22
				Cu Ft	4
COM Ydg	1 ½				
COL Sq Ft	33				

Single Upholstery Specify: Model | Upholstery

20SRSL1														
	COM	COL	A	B	C	D	E	F	G	H	I	J	L1	L2
Single Uph	\$843	\$928	\$856	\$882	\$928	\$988	\$1,047	\$1,139	\$1,238	\$1,343	\$1,508	\$1,705	\$1,363	\$1,508

Replacement Back - Lounge



Dimensions	D	W	H	Shipping	
Back	7	23	24	Ctn Wt	20
				Cu Ft	3
COM Ydg	1 ½				
COL Sq Ft	33				

Single Upholstery Specify: Model | Upholstery

20SRBL1														
	COM	COL	A	B	C	D	E	F	G	H	I	J	L1	L2
Single Uph	\$718	\$804	\$732	\$758	\$804	\$863	\$922	\$1,015	\$1,113	\$1,219	\$1,383	\$1,580	\$1,238	\$1,383

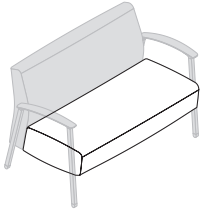
Model Upholstery

Grade
Vendor
Pattern
Colorway

Replacement Parts

Description + General Information

Replacement Seat - Two Seat Lounge

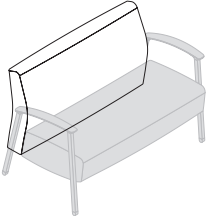


Dimensions	D	W	H	Shipping	
				Ctn Wt	41
Seat	22 ¾	42 ½	9 ½	Cu Ft	6
COM Ydg	1 ½				
COL Sq Ft	33				

Single Upholstery Specify: Model | Upholstery

20SRSL2														
	COM	COL	A	B	C	D	E	F	G	H	I	J	L1	L2
Single Uph	\$1,205	\$1,290	\$1,218	\$1,244	\$1,290	\$1,350	\$1,409	\$1,501	\$1,600	\$1,705	\$1,869	\$2,067	\$1,725	\$1,869

Replacement Back - Two Seat Lounge



Dimensions	D	W	H	Shipping	
				Ctn Wt	38
Seat	7	42 ½	24	Cu Ft	5
COM Ydg	2 ½				
COL Sq Ft	55				

Single Upholstery Specify: Model | Upholstery

20SRBL2														
	COM	COL	A	B	C	D	E	F	G	H	I	J	L1	L2
Single Uph	\$1,093	\$1,236	\$1,115	\$1,159	\$1,236	\$1,335	\$1,433	\$1,587	\$1,751	\$1,927	\$2,201	\$2,530	\$1,960	\$2,201

Model Upholstery

Grade
Vendor
Pattern
Colorway

Replacement Parts

Description	D	W	H	CTN WT	CU FT	① Model	List Price (per Arm Cap)
Replacement Arm Cap for Lounge Arm	20	2 ½	2	5	1	right 20SRLPACR - Polyurethane	\$188
	20	2 ½	2	5	1	left 20SRLPACL - Polyurethane	\$188



right shown

20	2 ½	2	4	1	right	20SRL3LACR - 3D Laminate	\$279
20	2 ½	2	4	1	left	20SRL3LAACL - 3D Laminate	\$279

20	2 ½	2	4	1	right	20SRLWACR - Wood	\$297
20	2 ½	2	4	1	left	20SRLWACL - Wood	\$297

20	2 ½	2	5	1	right	20SRLSACR - Solid Surface	\$432
20	2 ½	2	5	1	left	20SRLSAACL - Solid Surface	\$432

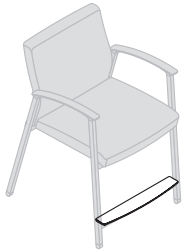
Model	Arm Cap
PAC	Polyurethane Arm Cap
3LAC	3D Laminate Arm Cap
WAC	Wood Arm Cap
SAC	Solid Surface Arm Cap

[see arm cap finishes](#)

Replacement Parts

Description	D	W	H	CTN WT	CU FT	① Model	List Price
Replacement Footrest	3 ½	21 ½	1 ¾	4	1	20SRFTRPU	\$207

- Matte Black



Replacement Leveling G15 Glides	1 ¼	1 ¼	1	1	1	20SRGLIDES	\$100
--	-----	-----	---	---	---	-------------------	--------------

- leveling glides cannot be specified to replace standard G10, MagLinx™ G20 or BoltLink G25
- always Matte Black

